



Republic of the Philippines
Department of Budget and Management
PROCUREMENT SERVICE
BIDS AND AWARDS COMMITTEE



Bid Bulletin No. 5
29 March 2019

Public Bidding No. 19-089-2

**SUPPLY AND DELIVERY OF VARIOUS OFFICE FURNITURE
FOR THE BUREAU OF IMMIGRATION (BI)**

Issued pursuant to Sec. 22.5 of the IRR of R.A. 9184 to clarify and/or amend¹ certain provisions in the Bidding Documents issued for this project, considering the issues raised and clarifications made by prospective bidders during the Pre-Bid Conference held on **18 March 2019**, likewise, respond to bidders' written queries received within the prescriptive period for filing.

A. AMENDMENTS/INCLUSIONS

I. Invitation to Bid

AMENDMENTS/INCLUSION		BASES FOR AMENDMENT/ INCLUSION
Activities	Date and Time	To fully understand the activity.
Issuance of Submission of Last Day of Issuance of Bid Bulletin	March 25, 2019 April 1, 2019	

II. TECHNICAL SPECIFICATIONS

AMENDMENTS/INCLUSION	BASES FOR AMENDMENT/ INCLUSION
<p>LOT NO. 1</p> <p>Item No. 1: EXECUTIVE CHAIR</p> <p>AGENCY SPECIFICATIONS</p> <p>EXECUTIVE CHAIR, complies with the following minimum requirements unless specified:</p> <p>Highback, (750 mm)</p> <p><u>Backrest Dimension: 800mm x 550mm (HxW) (refer to attached illustration for the design), Double Padded, Perforated Leatherette</u></p> <p><u>Seatrest dimension: 600mm x 550mm (DxW) (refer to attached illustration for the design), Double Padded, Perforated Leatherette</u></p> <p>Material: Black Leatherette with tilting Mechanism</p> <p>Adjustable Height Adjustment with Gas lift</p> <p>Padded Metal Armrest finish</p>	<p>To provide the complete and detailed Technical Specifications of the required items. (Appendix 1)</p> <p>Please refer to attached drawings/illustrations herein attached as Annex "A".</p>

¹ For the purpose of this Bulletin and for better understanding of its contents, the following rules shall apply: (a) ~~Double Strike-out~~ – denotes deletion; (b) Underline – denotes inclusion or new item/requirement; and "xxx" – denotes separation of phrase/s being amended from the rest of the main text.

Heavy Duty Prolonged Chrome Star Base with Caster

Item No. 2: EXECUTIVE TABLE

AGENCY SPECIFICATIONS
EXECUTIVE TABLE , complies with the following minimum requirements unless specified:
6cm Thick Top, Medium Density Fiber Board (MDF)
Glossy Mahogany Brown Finish
With Built-In 3 Drawers Cabinet (stainless handle) with Centralized Lock with Key 69.5cm H x 39cm L
With Center Drawer (Leatherette) 39.7cm L , Leatherette on Top (Fixed) 60cm x 40cm
Size: 1.5m L x .75m W x .75m H

LOT NO. 2

Item No. 1: OFFICE CHAIR (CLERICAL)

AGENCY SPECIFICATIONS
OFFICE CHAIR (CLERICAL) , complies with the following minimum requirements unless specified:
Midback (650mm)
Backrest Dimension: 600mm x 500mm (HxW)(refer to attached illustration for the design), Double Padded, Perforated Leatherette
Seatrest dimension: 500mm x 500mm (DxW), (refer to attached illustration for the design), Double Padded, Perforated Leatherette
Black Leatherette with tilting Mechanism
Adjustable Height Adjustment with Gas lift
Padded Metal Armrest finish
Heavy Duty Prolonged Chrome Star Base with Caster

Item No. 2: OFFICE TABLE

AGENCY SPECIFICATIONS
OFFICE TABLE , complies with the following minimum requirements unless specified:
Medium Density Fiber Board (MDF) in Glossy Mahogany Brown Finish
With Built-In 3 Drawers (stainless Handle) Cabinet with Centralized Lock with Key
with Shelves, Leatherette on Top
Size: 1.2m L x .60m W x .75m H

To provide the complete and detailed Technical Specifications of the required items. (Appendix 1)

Please refer to attached drawings/illustrations herein attached as Annex "A".

To provide the complete and detailed Technical Specifications of the required items. (Appendix 2)

Please refer to attached drawings/illustrations herein attached as Annex "B".

LOT NO. 3

Item No. 1: COUNTER CHAIR

AGENCY SPECIFICATIONS
COUNTER CHAIR, <u>complies with the following minimum requirements unless specified:</u>
Backrest: (650mm) 490mm H x 540mm W x 490mm L , Black Leatherette with tilting Mechanism
Adjustable Height Adjustment with Gas lift, without Armrest
Pneumatic height adjustment (up to 160cm-220cm)
Heavy Duty Prolonged Chrome Aluminum Alloy Starbase 1.3 kg with Caster and stopper

Item No. 2: VISITOR CHAIR

AGENCY SPECIFICATIONS
VISITOR CHAIR, complies with the following minimum requirements unless specified:
Backrest: 500mm w x 600mm h /Seat: 500mm w x 480mm d /height: 480mm min-520mm max 520mm w x 650mmh
Seatrest: 520mm x 520mm (DxW); 7cm thick
Modern design with a chrome cantilever and fixed arms
Cushioned seat and back visitors chair type with armrests
Black leatherette upholstery
Fixed Cushioned Seat pad, Leatherette, Chrome, Metal Legs.

XXX

Item No. 5: LATERAL SIDE CABINET

AGENCY SPECIFICATIONS
LATERAL SIDE CABINET, complies with the following minimum requirements unless specified:
Medium Density Fiber Board (MDF), in Glossy Mahogany Brown Finish,
With Two Cabinet with Door, Keyboard Tray, with shelves,
Size: 1.2mL x .42mW x 67 .66mH

To provide the complete and detailed Technical Specifications of the required items. (Appendix 3)

Please refer to attached drawings/illustrations herein attached as Annex C.

A. CLARIFICATIONS

Supplier	ISSUES/CONCERNS	CLARIFICATION/ RESOLUTIONS
Progress Sheridan	Progress. Sheridan sent a written clarifications asking the following: 1. Lot 1 Item No. 2 ➤ Surface of Center table is covered by leatherette; during pre-bid we did not mentioned about the surface only leatherette	BAC took note of the Clarification: 1. Lot 1 Item No. 2 ➤ We have mentioned the leatherette surface at the center top of the table as illustrated in the attached picture

	<p>on the top of the table.</p> <ul style="list-style-type: none"> ➤ Handle and top edge of built-in drawer is stainless; it is okay, if we offer metal handle? 	<p>during the prebid conference.</p> <ul style="list-style-type: none"> ➤ As a clarification the leatherette surface measures 60cm x 40cm. ➤ Handle and top edge of built-in-drawer should be stainless
	<p>2. Lot 2 Item No. 2</p> <ul style="list-style-type: none"> ➤ No size of shelves/drawer in the diagram. 	<p>2. Lot 2 Item No. 2</p> <ul style="list-style-type: none"> ➤ The size of shelves / drawer shall be: Length – 37cm Width – 37cm Height – 40cm
	<p>3. Lot 3 Item No. 1 Counter Chair</p> <ul style="list-style-type: none"> ➤ Specification is chrome legs but in the diagram is Aluminum Alloy Star Base 1.3 kilogram. ➤ Size of Back in the specs: Back is 650mm in the diagram is 49cm. 	<p>3. Lot 3 Item No. 1 Counter Chair</p> <ul style="list-style-type: none"> ➤ For the counter chair, the legs should be Aluminum Alloy Star Base 1.3 kilogram. ➤ The size of back is 49cm-back x 49cm length x 54cm width.
	<p>Item No. 2 Visitor Chair</p> <ul style="list-style-type: none"> ➤ Specs: Back 500mm W x 600mm H; Seat 500mm W x 480mm D; Height 480mm min 520mm max but in the diagram Seat 52cm x 52cm; Back 52cm x 52cm; Height 65cm. 	<p>Item No. 2 Visitor Chair</p> <ul style="list-style-type: none"> ➤ The size of the Visitor Chair is Seat=52cm x 52cm, Back 52cm x 52cm; Height 65cm.

All provisions of the bidding document that are affected by newly issued bidding documents template s are deemed modified / amended / revised.

By Rules, all other related provisions in the Bidding Documents correspondingly affected by these amendments are likewise deemed amended to conform to this Bid Bulletin.

Amendments made herein shall be considered an integral part of the Bidding Documents.

(SGD) ENGR. MANUEL S. AVILA
Chairperson, Bids and Awards Committee 2

Technical Specifications

LOT NO. 1

<u>Item No. 1</u>	:	EXECUTIVE CHAIR
Quantity	:	50 units
Approved Budget per Unit	:	P 8,500.00
Total Approved Budget for the Contract	:	P 425,000.00

AGENCY SPECIFICATIONS	BIDDER'S STATEMENT OF COMPLIANCE ("COMPLY")	ACTUAL OFFER
EXECUTIVE CHAIR , complies with the following minimum requirements unless specified:	Brand and Model (if applicable): Reference (i.e. page no. and highlight):	
Highback		
Backrest Dimension:800mm x 550mm (HxW) (refer to attached illustration for the design), Double Padded, Perforated Leatherette		
Seatrest dimension: 600mm x 550mm (DxW) (refer to attached illustration for the design), Double Padded, Perforated Leatherette		
Material: Black Leatherette with tilting Mechanism		
Adjustable Height Adjustment with Gas lift		
Padded Metal Armrest finish		
Heavy Duty Prolonged Chrome Star Base with Caster		

Item No. 2 : **EXECUTIVE TABLE**
Quantity : **50 units**
Approved Budget per Unit : **P 14,423.00**
Total Approved Budget for the Contract : **P 721,154.00**

AGENCY SPECIFICATIONS	BIDDER'S STATEMENT OF COMPLIANCE ("COMPLY")	ACTUAL OFFER
EXECUTIVE TABLE , complies with the following minimum requirements unless specified:	Brand and Model (if applicable):	
	Reference (i.e. page no. and highlight):	
6cm Thick Top, Medium Density Fiber Board (MDF)		
Glossy Mahogany Brown Finish		
With Built-In 3 Drawers Cabinet (stainless handle) with Centralized Lock with Key 69.5cm H x 39cm L		
With Center Drawer (Leatherette) 39.7cm L, Leatherette on Top (Fixed) 60cm x 40cm		
Size: 1.5mLx.75mWx.75mH		

I hereby certify that the statement of compliance to the foregoing technical specifications are true and correct, otherwise, if found to be false either during bid evaluation or post-qualification, the same shall give rise to automatic disqualification of our bid.

Name of Company

Signature Over Printed Name of
Authorized Representative

Date

LOT NO. 2

Item No. 1 : **OFFICE CHAIR (CLERICAL)**
Quantity : **500 units**
Approved Budget per Unit : **P 7,307.69**
Total Approved Budget for the Contract : **P 3,653,846.00**

AGENCY SPECIFICATIONS	BIDDER'S STATEMENT OF COMPLIANCE ("COMPLY")	ACTUAL OFFER
OFFICE CHAIR (CLERICAL) , complies with the following minimum requirements unless specified:	Brand and Model (if applicable): Reference (i.e. page no. and highlight):	
Midback		
Backrest Dimension: 600mm x 500mm (HxW) (refer to attached illustration for the design), Double Padded, Perforated Leatherette		
Seatrest dimension: 500mm x 500mm (DxW), (refer to attached illustration for the design), Double Padded, Perforated Leatherette		
Black Leatherette with tilting Mechanism		
Adjustable Height Adjustment with Gas lift		
Padded Metal Armrest finish		
Heavy Duty Prolonged Chrome Star Base with Caster		

Item No. 2 : **OFFICE TABLE**

Quantity : **100 units**

Approved Budget per Unit : **P 6,730.70**

Total Approved Budget for the Contract : **P 673,077.00**

AGENCY SPECIFICATIONS	BIDDER'S STATEMENT OF COMPLIANCE ("COMPLY")	ACTUAL OFFER
OFFICE TABLE , complies with the following minimum requirements unless specified:	Brand and Model (if applicable): Reference (i.e. page no. and highlight):	
Medium Density Fiber Board (MDF) in Glossy Mahogany Brown Finish		
With Built-In 3 Drawers (stainless Handle) Cabinet with Centralized Lock with Key		
with Shelves, Leatherette on Top		
Size: 1.2m L x .60m W x .75m H		

I hereby certify that the statement of compliance to the foregoing technical specifications are true and correct, otherwise, if found to be false either during bid evaluation or post-qualification, the same shall give rise to automatic disqualification of our bid.

Name of Company

Signature Over Printed Name of
Authorized Representative

Date

LOT NO. 3

APPENDIX 3

Item No. 1 : **COUNTER CHAIR**
Quantity : **300 units**
Approved Budget per Unit : **P 4,580.00**
Total Approved Budget for the Contract : **P 1,374,000.00**

AGENCY SPECIFICATIONS	BIDDER'S STATEMENT OF COMPLIANCE ("COMPLY")	ACTUAL OFFER
COUNTER CHAIR , complies with the following minimum requirements unless specified:	Brand and Model (if applicable): Reference (i.e. page no. and highlight):	
Backrest: 490mm H x 540mm W x 490mm L, Black Leatherette with tilting Mechanism		
Adjustable Height Adjustment with Gas lift, without Armrest		
Pneumatic height adjustment (up to 160cm-220cm)		
Heavy Duty Prolonged Aluminum Alloy Starbase 1.3 kg with Caster and stopper		

Item No. 2 : **VISITOR CHAIR**
Quantity : **100 units**
Approved Budget per Unit : **P 5,500.00**
Total Approved Budget for the Contract : **P 550,000.00**

AGENCY SPECIFICATIONS	BIDDER'S STATEMENT OF COMPLIANCE ("COMPLY")	ACTUAL OFFER
VISITOR CHAIR , complies with the following minimum requirements unless specified:	Brand and Model (if applicable): Reference (i.e. page no. and highlight):	
Backrest: 520mm w x 650mm h Seatrest; 520mm x 520mm (DxW); 7cm thick		
Modern design with a chrome cantilever and fixed arms		
Cushioned seat and back visitors chair type with armrests		
Black leatherette upholstery		

Fixed Cushioned Seat pad, Leatherette, Chrome, Metal Legs.		
--	--	--

Item No. 5 : **LATERAL SIDE CABINET**
Quantity : **10 units**
Approved Budget per Unit : **P 5,769.30**
Total Approved Budget for the Contract : **P 57,693.00**

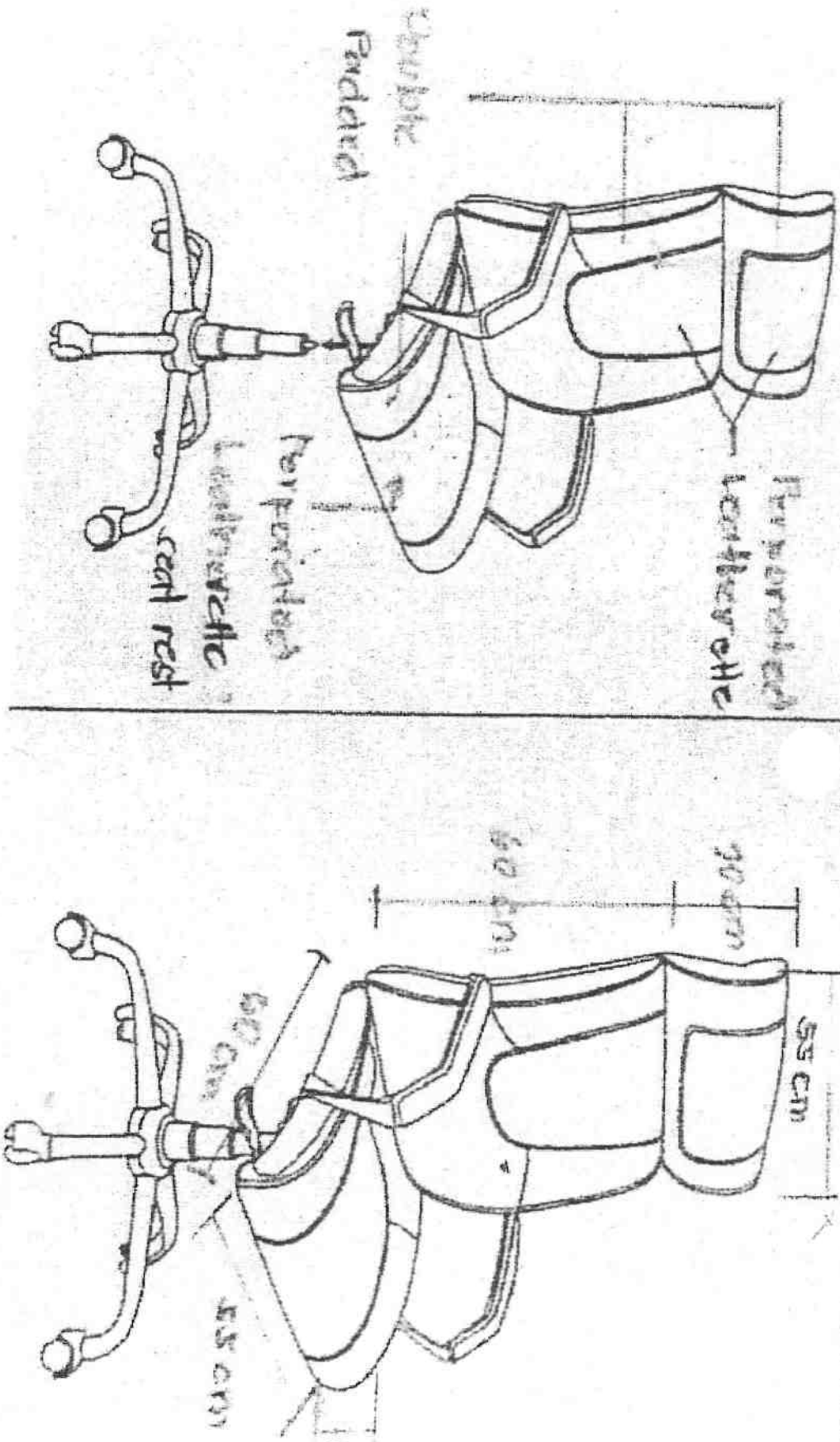
AGENCY SPECIFICATIONS	BIDDER'S STATEMENT OF COMPLIANCE ("COMPLY")	ACTUAL OFFER
LATERAL SIDE CABINET , complies with the following minimum requirements unless specified:	Brand and Model (if applicable): Reference (i.e. page no. and highlight):	
Medium Density Fiber Board (MDF), in Glossy Mahogany Brown Finish,		
With Two Cabinet with Door, Keyboard Tray, with shelves,		
Size: 1.2mLx.42mWx.66mH		

I hereby certify that the statement of compliance to the foregoing technical specifications are true and correct, otherwise, if found to be false either during bid evaluation or post-qualification, the same shall give rise to automatic disqualification of our bid.

Name of Company	Signature Over Printed Name of Authorized Representative	Date
-----------------	---	------

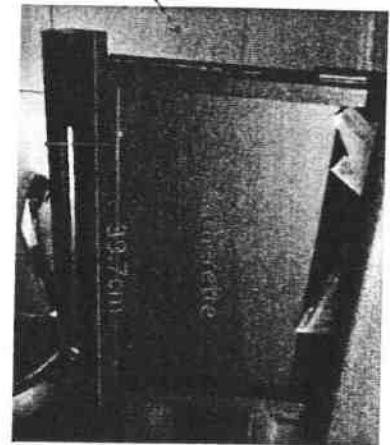
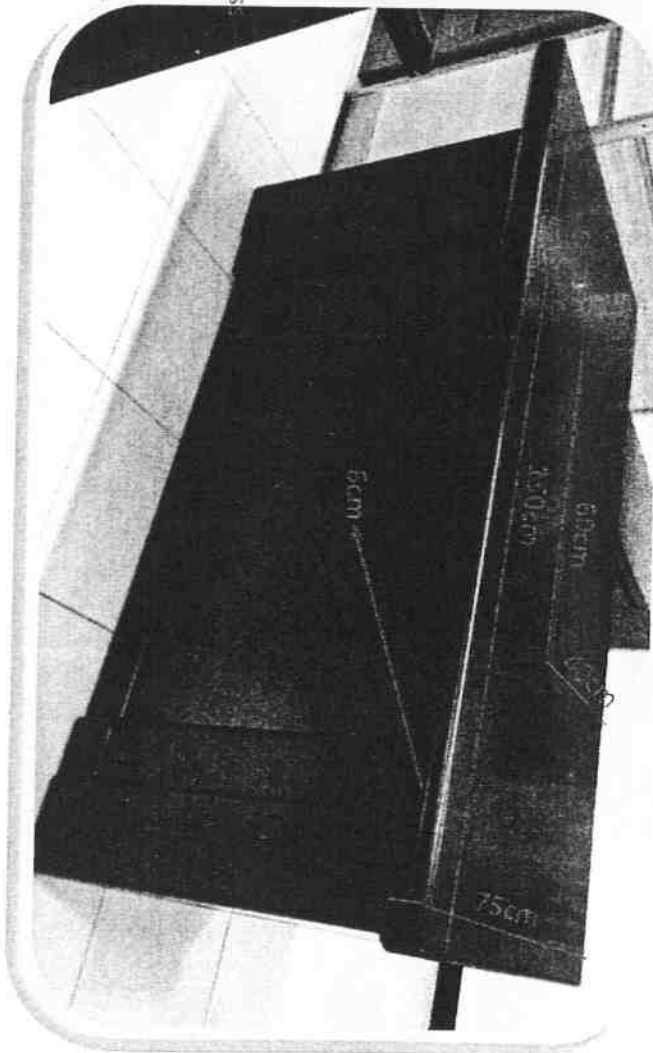
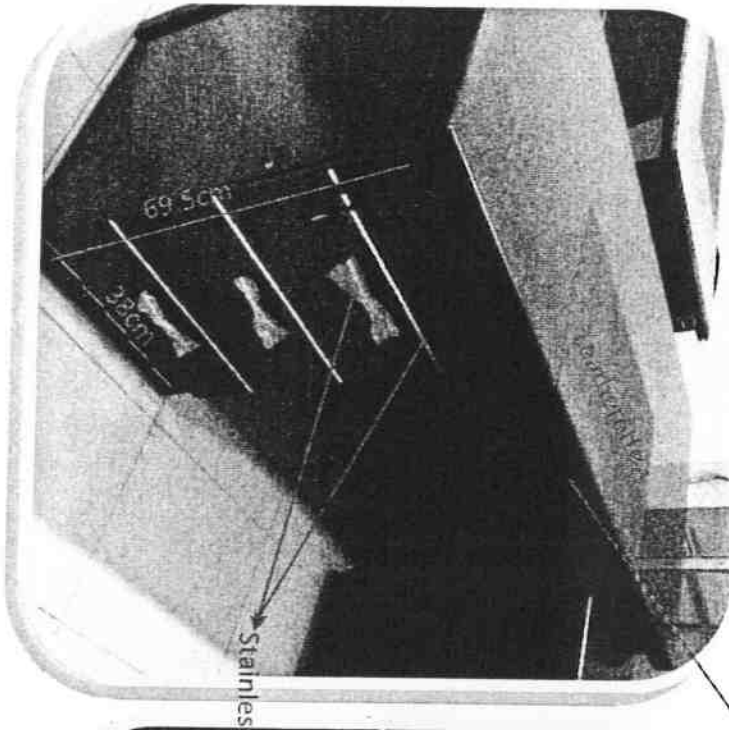


EXECUTIVE CHAIR





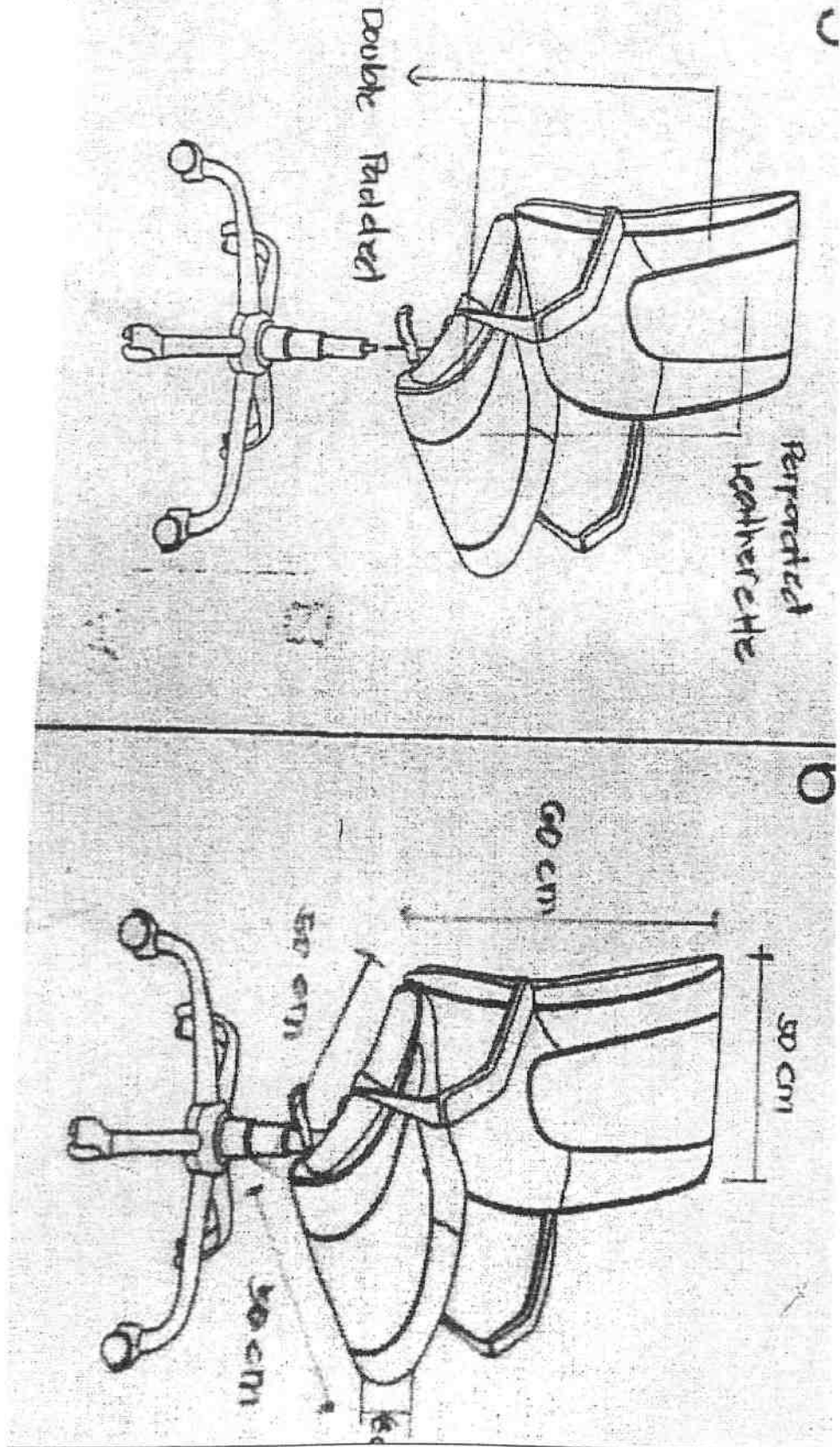
REPUBLIC OF THE PHILIPPINES
DEPARTMENT OF JUSTICE
BUREAU OF IMMIGRATION
MAGALLANES DRIVE, INTRAMUROS
1002 MANILA



EXECUTIVE TABLE

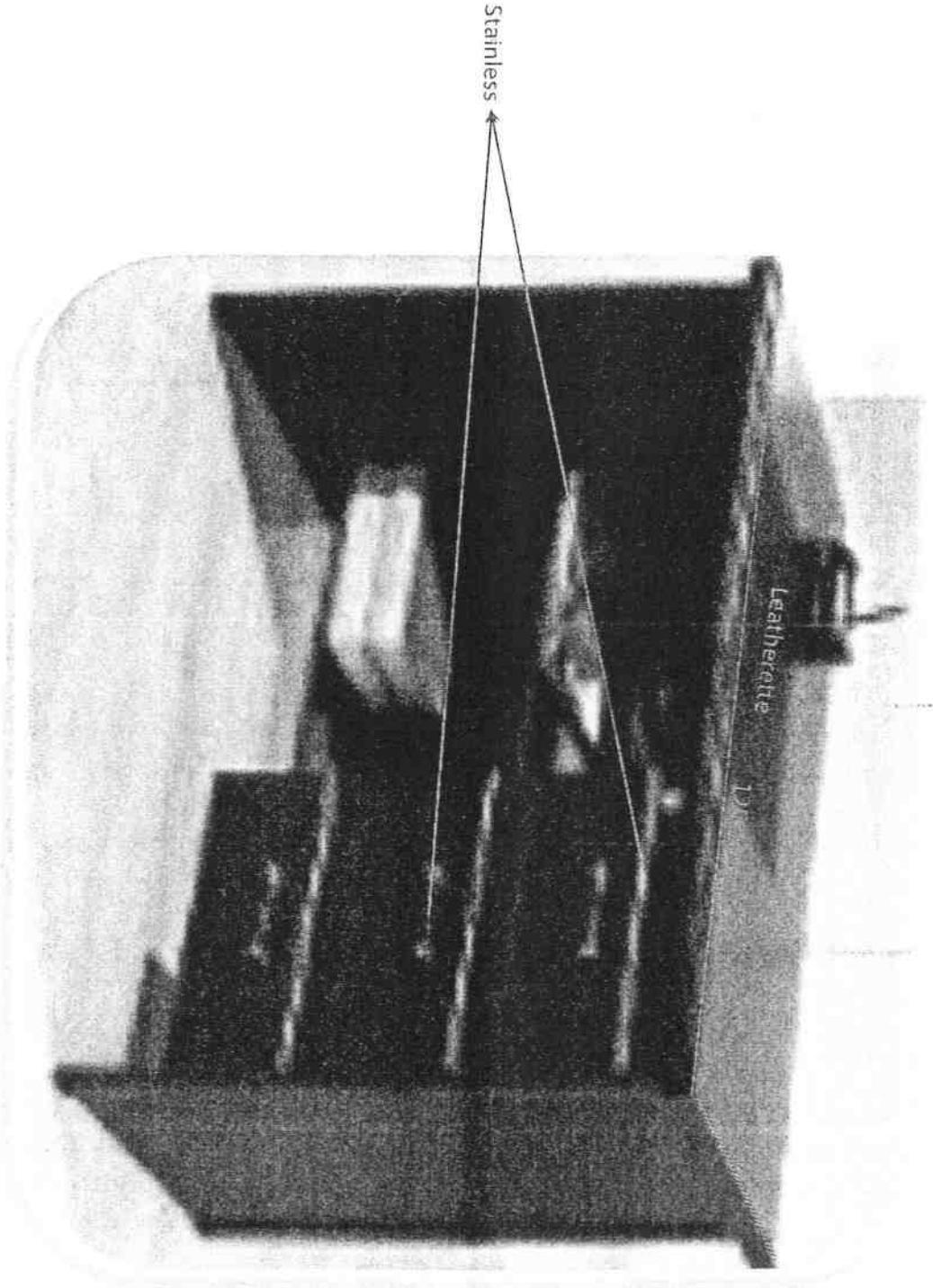


OFFICE CHAIR (CLERICAL)





REPÚBLICA DE LAS FILIPINAS
DEPARTAMENTO DE JUSTICIA
BUREAU OF IMMIGRATION
MAGALLANES DRIVE, INTRAMUROS
1002 MANILA

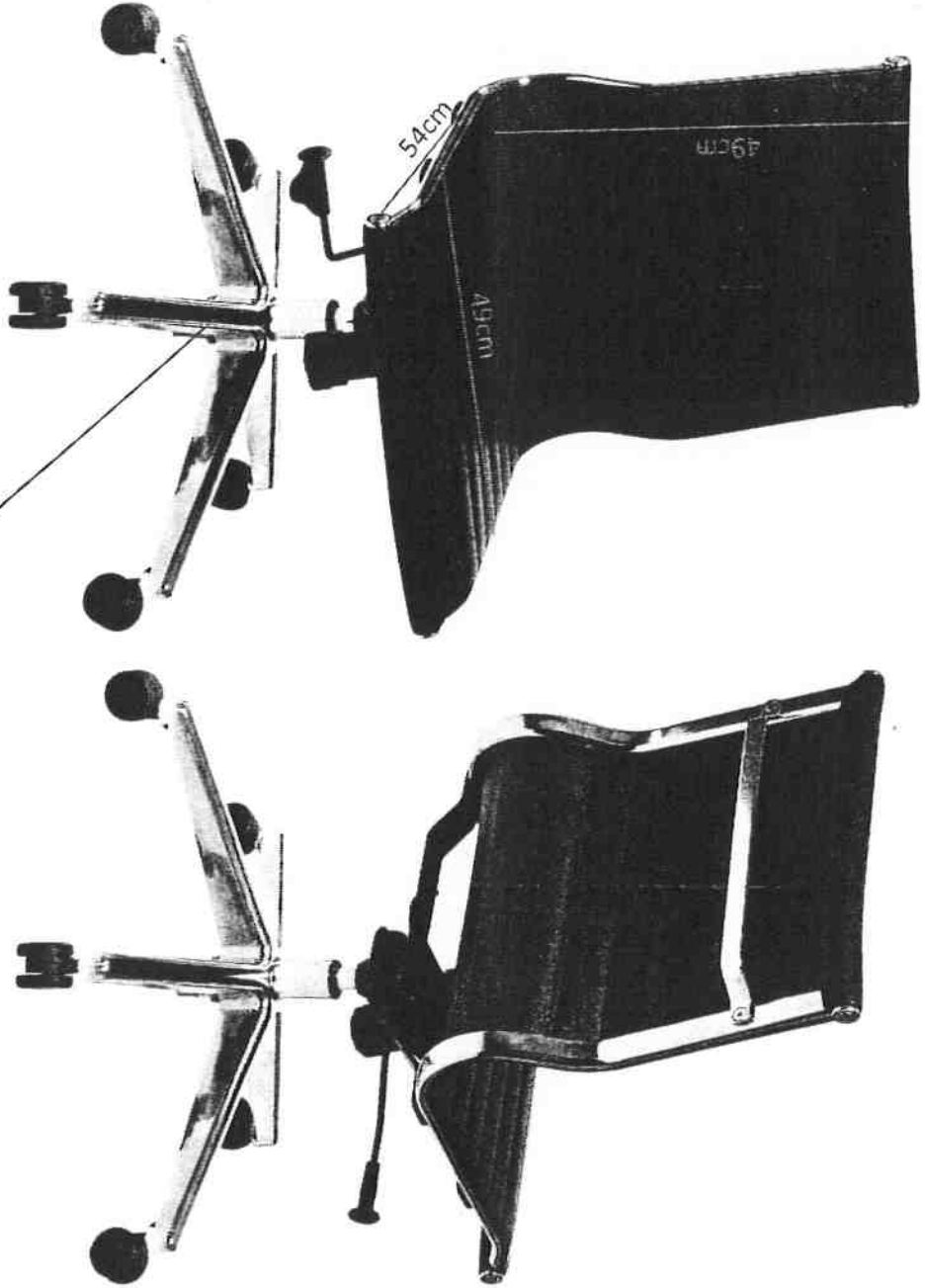


OFFICE TABLE



REPUBLIC OF THE PHILIPPINES
DEPARTMENT OF JUSTICE
BUREAU OF IMMIGRATION
MAGALLANES DRIVE, INTRAMUROS
1002 MANILA

ANNEX C



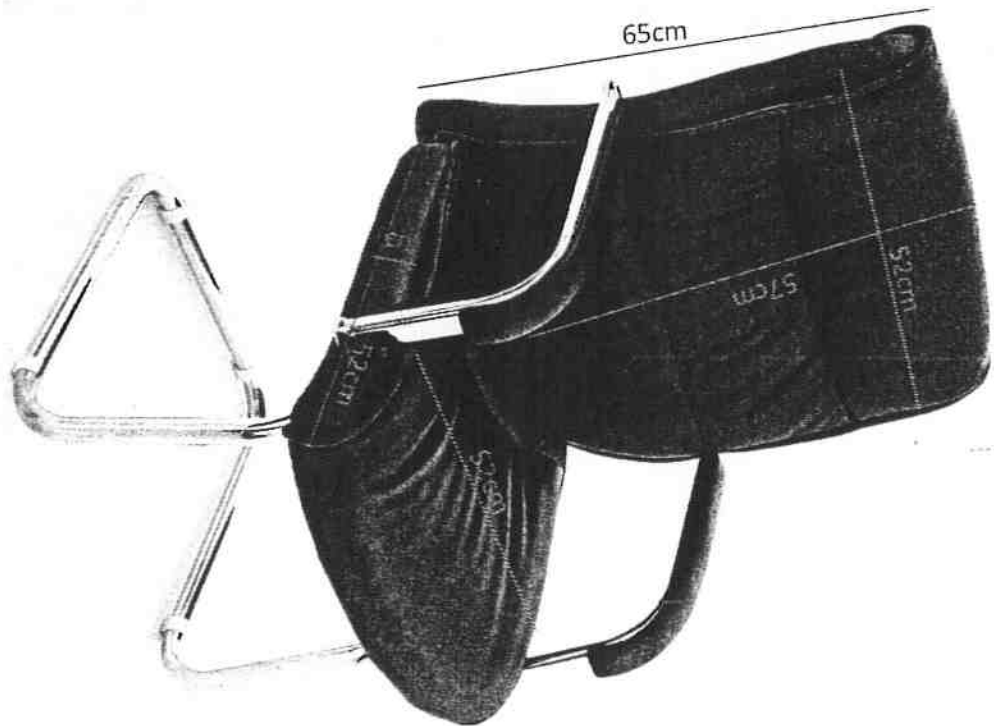
Aluminum Alloy Star Base, 1.3
Kilogram.

COUNTER CHAIR



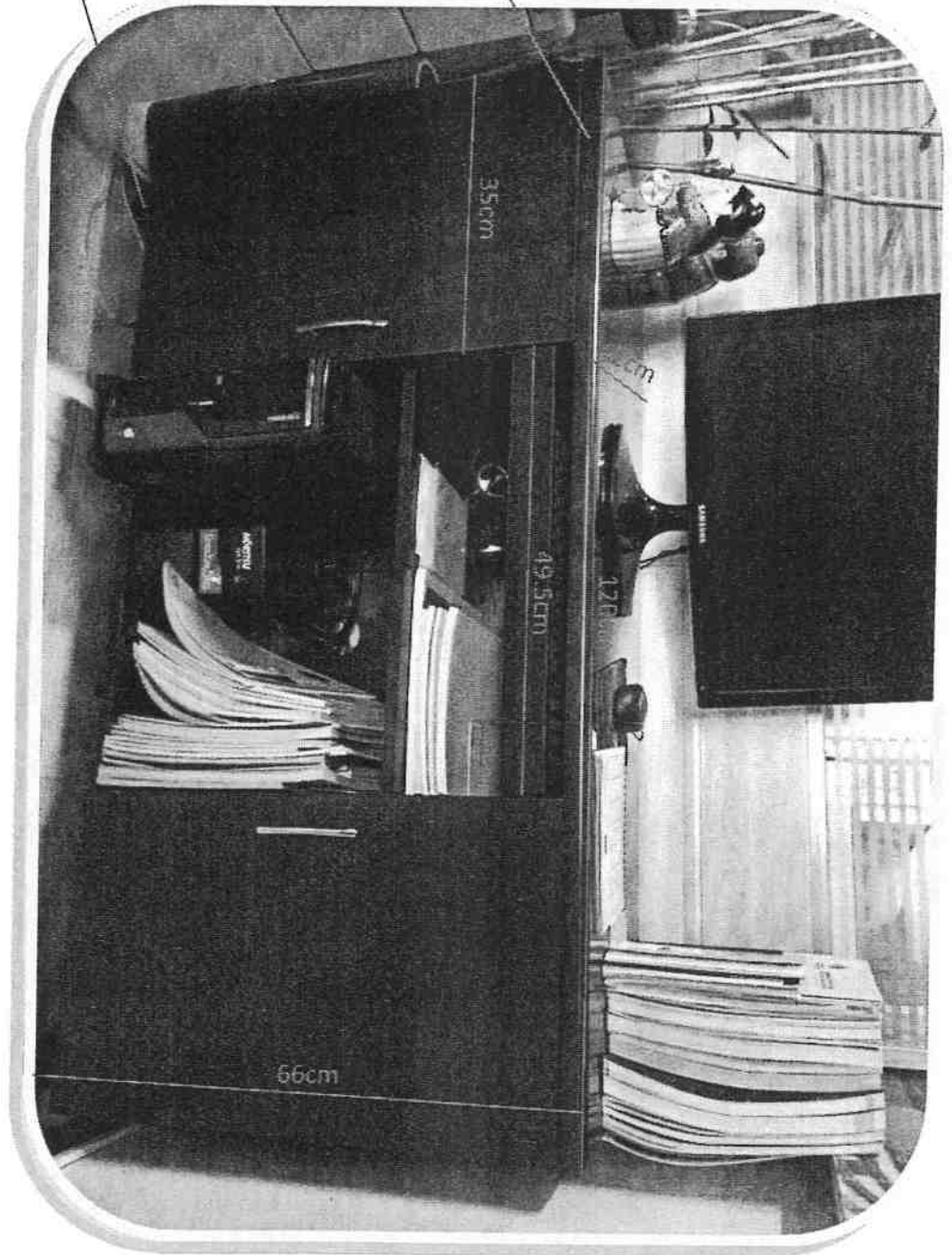
REPUBLIC OF THE PHILIPPINES
DEPARTMENT OF JUSTICE
BUREAU OF IMMIGRATION
MAGALLANES DRIVE, INTRAMUROS
1002 MANILA

VISITOR CHAIR





REPUBLIC OF THE PHILIPPINES
DEPARTMENT OF JUSTICE
BUREAU OF IMMIGRATION
MAGALLANES DRIVE, INTRAMUROS
1002 MANILA



LATERAL CABINET