

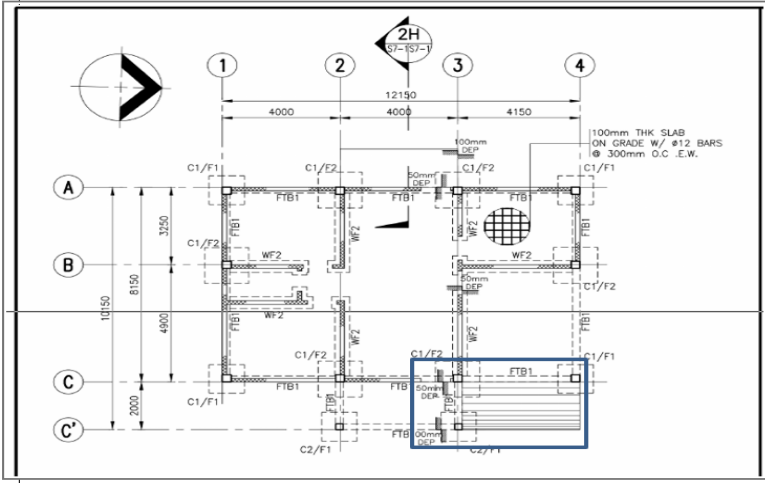
Bid Bulletin No. 6
 August 27, 2020

PUBLIC BIDDING No. 20 – 022– 3

**CONSTRUCTION OF ASCOM FACILITIES AT CAMP AQUINO, TARLAC
 FOR THE BASES CONVERSION AND DEVELOPMENT AUTHORITY**

Issued pursuant to Sec. 22.5 of the IRR of R.A. 9184 to clarify and/or amend¹ certain provisions in the Bidding Documents issued for this project, considering the issues raised and clarifications made by prospective bidders during the **Pre-Bid Conference** held on **14 August 2020**, likewise, respond to bidders’ written queries received within the prescriptive period for filing.

I. Clarifications:

REFERENCE/AMENDMENT	JUSTIFICATION/ EXPLANATION
STRUCTURAL	
<p>SECTION VII Drawings Volume 2 S7-1</p> <p>Please provide the Detail of Ramp</p> 	<p>Please refer to the attached ASCOM DWG #7 for the Sgt. Major’s Quarter.</p>

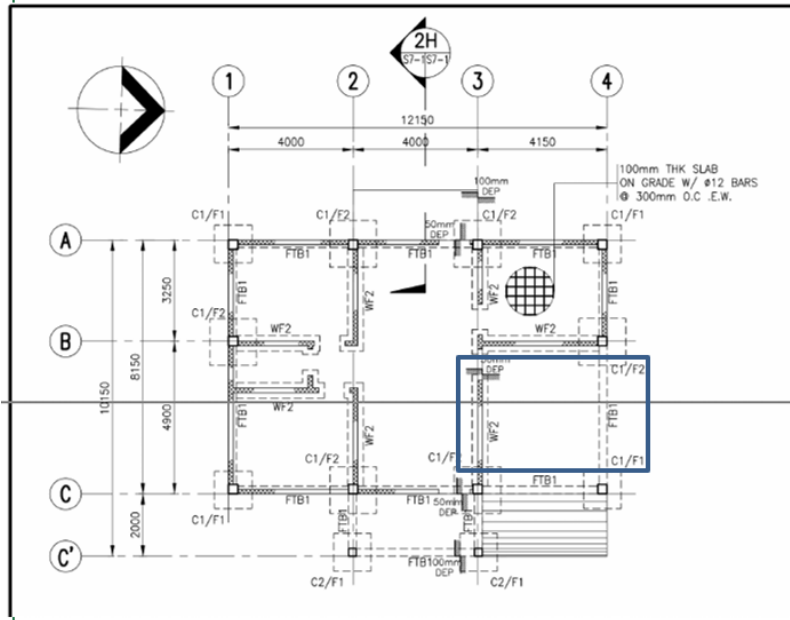
¹ For the purpose of this Bulletin and for better understanding of its contents, the following rules shall apply: (a) ~~Double Strike out~~ – denotes deletion; (b) Underline – denotes inclusion or new item/requirement; and “xxx” – denotes separation of phrase/s being amended from the rest of the main text.

REFERENCE/AMENDMENT

JUSTIFICATION/EXPLANATION

S7-1

Please confirm if slab on garage is same to other area, 100mm thk.



The slab is 150mm thk, with Ø12 @ 250 mm o.c. e.w.

S29-2

Verify number of sets of Column ties of C2A & C2, discrepancy to given drawings, which will govern

SCHEDULE OF COLUMNS						
FLOOR LEVEL	COL. MARK	C1	C2A	FLOOR LEVEL	COL. MARK	C2
TOP OF FTB TO ROOF LEVEL				FOOTING TO ROOF LEVEL		
SIZE		300x300	400x550	SIZE		400x550
VERT. REINF.		10-#16	16-#16	VERT. REINF.		16-#16
TIES (a)		#12 @ 150 O.C., 3/SET	#12 @ 150 O.C., 4/SET	TIES (a)		#12 @ 150 O.C., 4/SET
CONFIN. REINF. (b)		#12 @ 75 O.C., 3/SET	#12 @ 75 O.C., 4/SET	CONFIN. REINF. (b)		#12 @ 75 O.C., 4/SET
JOINT REINF. (c)		#12 @ 75 O.C., 3/SET	#12 @ 75 O.C., 4/SET	JOINT REINF. (c)		#12 @ 75 O.C., 4/SET
TOP OF FOOTING TO TOP OF FTB				FOOTING TO ROOF LEVEL	COL. MARK	C3
SIZE		400x400	500x650	SIZE		300x400
VERT. REINF.		10-#16	16-#16	VERT. REINF.		12-#16
TIES (a)		#12 @ 150 O.C., 3/SET	#12 @ 150 O.C., 4/SET	TIES (a)		#12 @ 150 O.C., 3/SET
CONFIN. REINF. (b)		#12 @ 75 O.C., 3/SET	#12 @ 75 O.C., 4/SET	CONFIN. REINF. (b)		#12 @ 75 O.C., 3/SET
JOINT REINF. (c)		#12 @ 75 O.C., 3/SET	#12 @ 75 O.C., 4/SET	JOINT REINF. (c)		#12 @ 75 O.C., 3/SET

All columns should have a set of three (3) ties.

TYPICAL COLUMN ELEVATION & SCHEDULE

REFERENCE/AMENDMENT	JUSTIFICATION/ EXPLANATION
<p>S-29-1/A29-2</p> <p>Verify Ramp Layout (gridline A/12-14) conflict with Architectural layout</p>	<p>Ramp layout along grid A is from grid 3 to 14.</p>
<p>Location of Aluminum wall Louver</p>	<p>Please specify the building being referred to.</p>
<p>A24-1</p> <p>HQ LSG Porch Floor Finish</p>	<p>Concrete, natural finish.</p>
ARCHITECTURAL	
<p>Provide the dimension of transom at the following facilities:</p>	
<p>COMMANDER'S QUARTER, window type B, C and D.</p>	<p>B=480mm, C&D=300 mm</p>
<p>DEPUTY COMMANDER'S QUARTER, window type A, C, D and E.</p>	<p>A, C, D & E=300mm</p>
<p>CHIEF OF STAFF'S QUARTER, window type A, C, D and E.</p>	<p>A, C, D & E=300mm</p>
<p>SERGEANT MAJOR'S QUARTER, window type A and B.</p>	<p>A & B=300 mm</p>
<p>SENIOR OFFICER'S QUARTER A, B and C, window type A, B and D.</p>	<p>A, C, D=300mm, No transom for B</p>
<p>JUNIOR OFFICER'S QUARTER A and B, window type A and E.</p>	<p>A & E=300 mm</p>
<p>TRANSIENT OFFICER'S QUARTER, window type A, B, and D.</p>	<p>A, B & D=300 mm</p>
<p>ASCOM TRANSIENT FACULTY, window type B, C and D.</p>	<p>B, C & D=300mm</p>
<p>NCO BARRACKS, window type B, D and E.</p>	<p>B, D & E=300mm</p>
<p>FEMALE QUARTERS, window type B and D.</p>	<p>B & D=300mm</p>
<p>LSG BARRACKS, window type B, C and D.</p>	<p>B, C & D=300mm</p>
<p>COMMAND BARRACKS, window type B, C and D.</p>	<p>B, C & D=300mm</p>
<p>SSTC HEADQUARTER, window type A.</p>	<p>A=300mm</p>
<p>STUDENT CLASSROOM A and B, window type A.</p>	<p>A=300mm</p>
<p>STUDENT MESS HALL, window type D and E.</p>	<p>D & E=300mm</p>
<p>STUDENT BARRACKS A, B and C, window type A.</p>	<p>A=300mm</p>
<p>CHEMICAL, BIOLOGICAL & NUCLEAR FACILITIES, window type F.</p>	<p>F=300mm</p>
<p>HEADQUARTERS TRANSPORTATION BATTALION, window type A.</p>	<p>A=300mm</p>
<p>HEADQUARTERS MAINTENANCE BATTALION, window type A.</p>	<p>A=300mm</p>
<p>MAINTENANCE REPAIR BAY, window type A.</p>	<p>A=300mm</p>

HEADQUARTER SUPPLY BATTALION, window type A.	A=300mm
HEADQUARTER 72-100, window type A.	A=300mm
BOQ Please specify the location of 5000mmW x 3350mmH at Officers Clubhouse	5000mmW x 3350mmH is located between Mess Hall and Veranda, along Grid 7/E-G.
A20-2 Please provide the window and door tagging at EP Recreational Hall	Kindly refer to the attached updated Drawing Sheet No. A20-2 indicating door and window tags.
BOQ VS A20-8, A20-9 Please confirm what dimension will govern for D-25, D-26, W-3 (BOQ vs Door/Window Schedule) at EP Recreational Hall	Please follow the door and window schedule.
A27-2, A27-9/A29-2, A29-9 Please provide the location of W-3 at transportation Repair Bay and Maintenance Repair Bay	At BLDG 27: Along Grid 16/A-C (See 1D A27-4) At BLDG 29: Along Grid 3/A-C (See 1D A29-4)

All other provisions of the bidding documents affected by this amendment are deemed modified or amended accordingly.

Amendments made herein shall be considered an integral part of the Bidding Documents.

SGD.
ENGR. JAIME M. NAVARRETE, JR.
Chairperson, SBAC