



North-South Commuter Railway (NSCR) Project (Malolos-Tutuban)

**PRE-BID CONFERENCE
FOR CONTRACT PACKAGES CP01 & CP02**

Friday, 01 June 2018

AGENDA

- A. Welcome Message & Introduction of Participants
 - DOTr, PNR, Procurement Service (PS) BAC 1
 - Bidders
 - General Consultant (NSTren Consortium)
- B. Project Information and Explanation on Bidding Procedures & Requirements
- C. Bidder's Question

Disclaimer

- Any statement made at the Pre-Bid Conference does not modify the terms of the ***Bidding Documents***, unless such statement is specifically identified in writing as an official **Addendum through a Bid Bulletin**.
- The **Pre-Bid Conference** is also an opportunity for the prospective Bidders to request for clarifications about the Bidding Documents. However, such request must be followed up in writing and BAC 1 will respond in writing by issuing Bid Bulletins uploaded to the websites of PS-DBM, DOTr and PNR.

Project Information and Explanation on Bidding Procedures & Requirements

- Key Project Information
- Bid Timeline
- Composition of Bid Summary
- Technical Bid
- Price Bid
- Packing, Sealing and Marking of Bids for Submission

Key Project Information

- **Project Name:** North-South Commuter Railway Project (Malolos-Tutuban)
Also referred to as the NSCR Project
- **Contracts for Civil Works and Building:**
 - Package CP01:** Elevated Structures, 7 Stations and Depot
 - Package CP02:** Elevated Structures and 3 Stations

The Bidding Documents have been prepared separately for each package, and shall be Bid as separate Contracts, and shall not be combined in a single Bid.

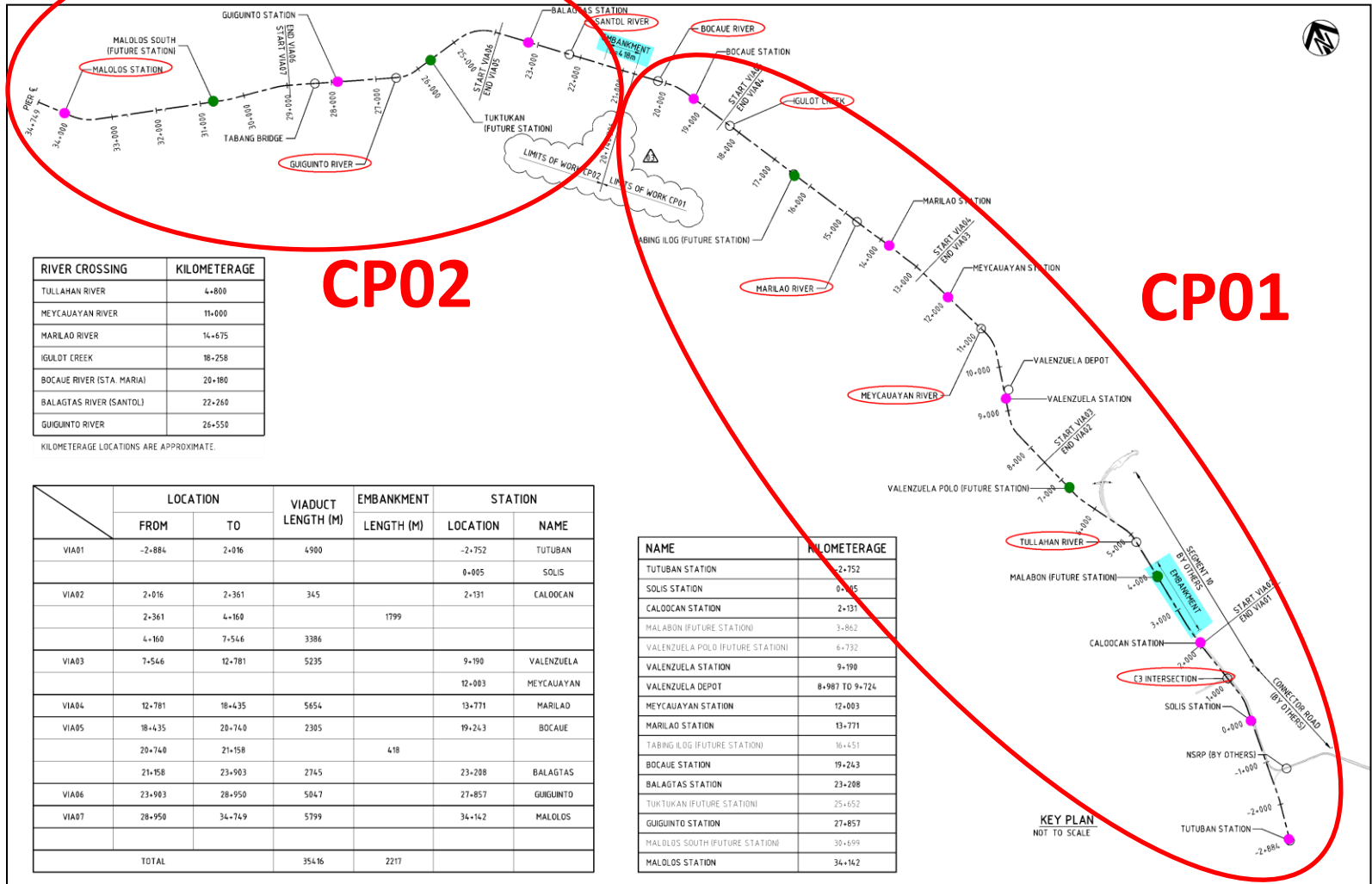
Note: The Bidding Documents Volume II. Part 2 – Works Requirements for the Scope of Works and Specifications are similar for both CP01 and CP02.

Key Project Information

Scope of Works

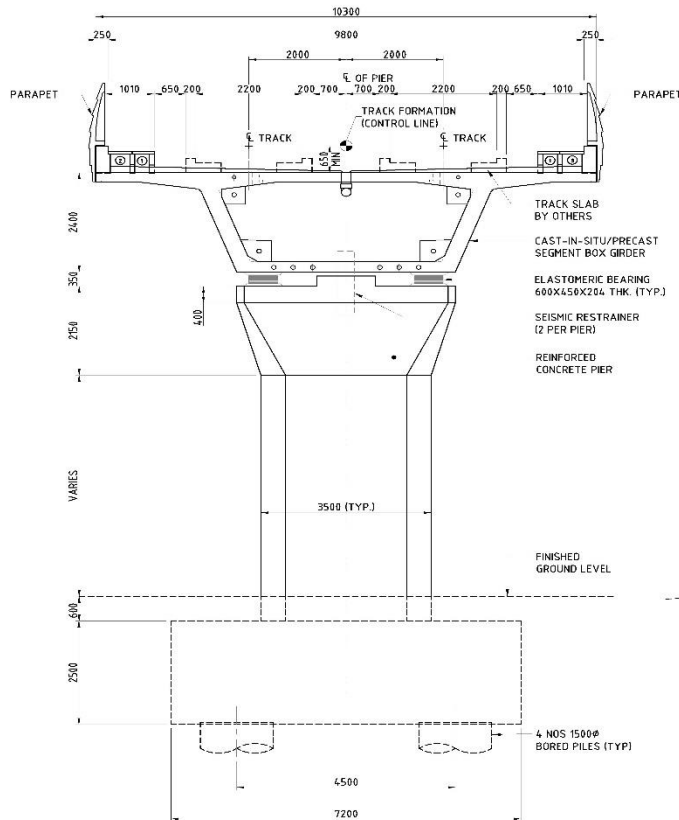
- The North–South Commuter Railway (NCSR) Project involves constructing 37.6 km of double track standard gauge railway from Malolos (Bulacan) to Tutuban (Manila), with a total of 10 Stations. The railway structure comprises 35.4 km elevated viaduct and 2.2 km embankment, and a Depot that will be located at Valenzuela. The travel time between Malolos and Tutuban will be approximately 35 minutes running at a maximum speed of 120 km/hr, and headways between trains of approximately 6 minutes.

NSCR Alignment

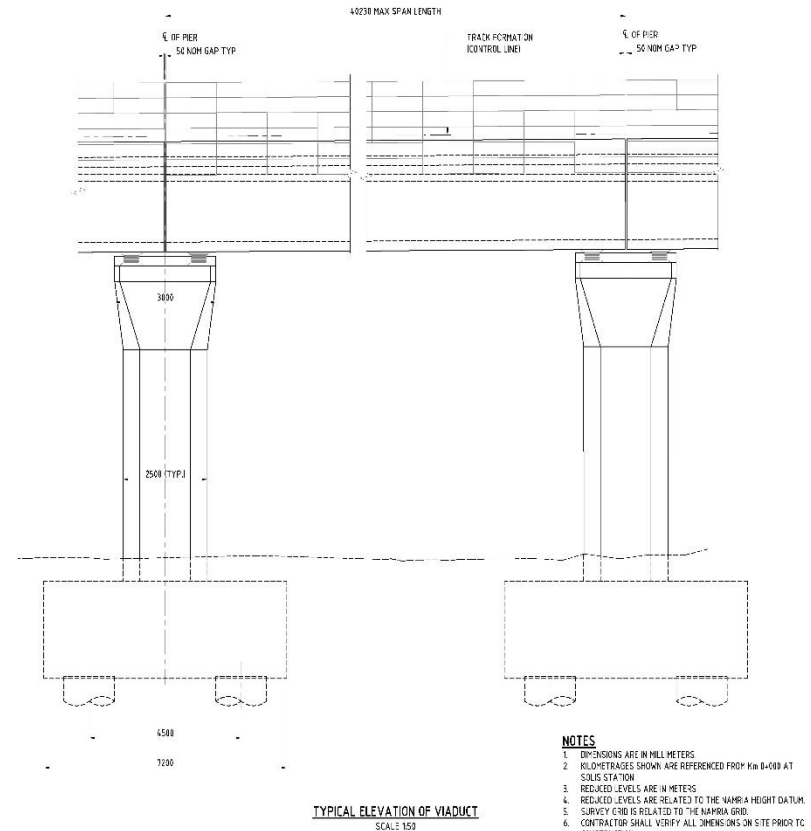


Typical Viaduct

Viaducts of typically 40m span has been used for most of the guideway, except between Guiguinto Station and Malolos station where viaducts of typically 50m span has been used to in order to avoid the existing piers constructed during the North Rail Project



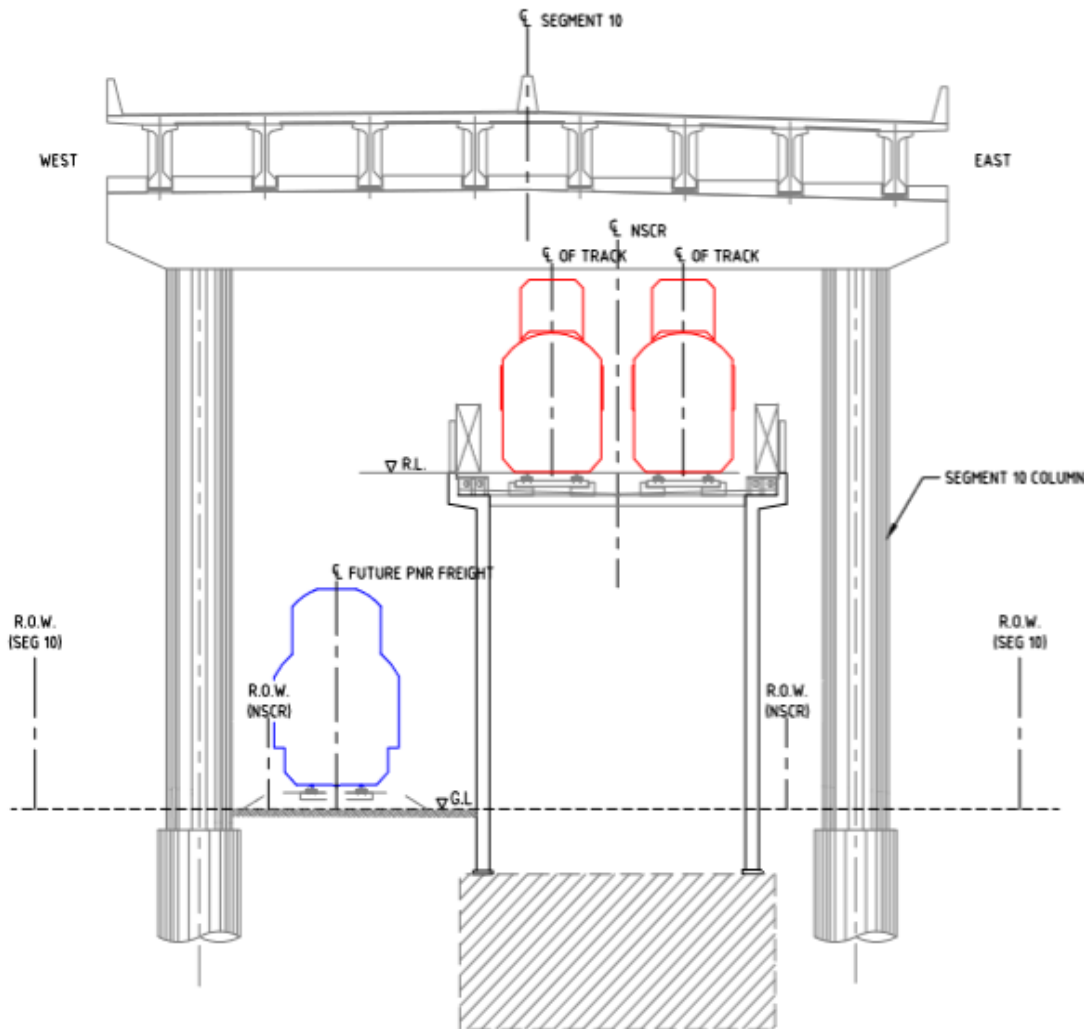
TYPICAL CROSS SECTION THROUGH VIADUCT



TYPICAL ELEVATION OF VIADUCT
SCALE: 1/50

- NOTES**
1. DIMENSIONS ARE IN MILLI METERS
 2. KEY-DIMENSIONS SHOWN ARE REFERENCED FROM: Km 0+000 AT SOLIS STATION
 3. REDUCED LEVELS ARE IN METERS
 4. REDUCED LEVELS ARE RELATED TO THE NAMRIA HEIGHT DATUM
 5. SURVEY GRID IS RELATED TO THE NAMRIA GRID
 6. CONTRACTOR SHALL VERIFY ALL DIMENSIONS ON SITE PRIOR TO CONSTRUCTION

Embankment Locations



Embankment has been used between chainages 2km361m to 4km160m because at this section, the NSCR alignment runs below the Segment 10 Expressway, and there is limited clearances for piling and construction of superstructure in case viaducts were used.

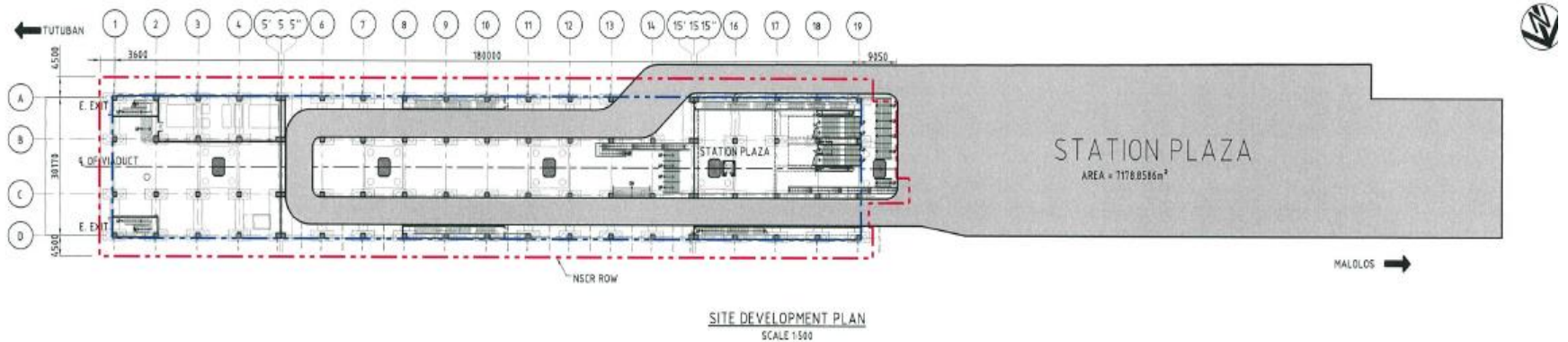
Embankment has also been used between chainage 20km740m and 21km148m as determined by the geotechnical and pre-existing conditions of the site. Embankment system has been based on the Japanese railway technical specifications

NSCR Stations



Sl. No.	Station Name	Chainage
1	Tutuban	-2Km+752m
2	Solis	0Km+5m
3	Caloocan	2Km+131m
4	Valenzuela	9Km+190m
5	Meycauayan	12Km+003m
6	Marilao	14Km+771m
7	Bocaue	19Km+243m
8	Balagtas	23Km+208m
9	Guiguinto	27Km+857m
10	Malolos	34Km+142m

NSCR STATION-PLAZA EXAMPLE

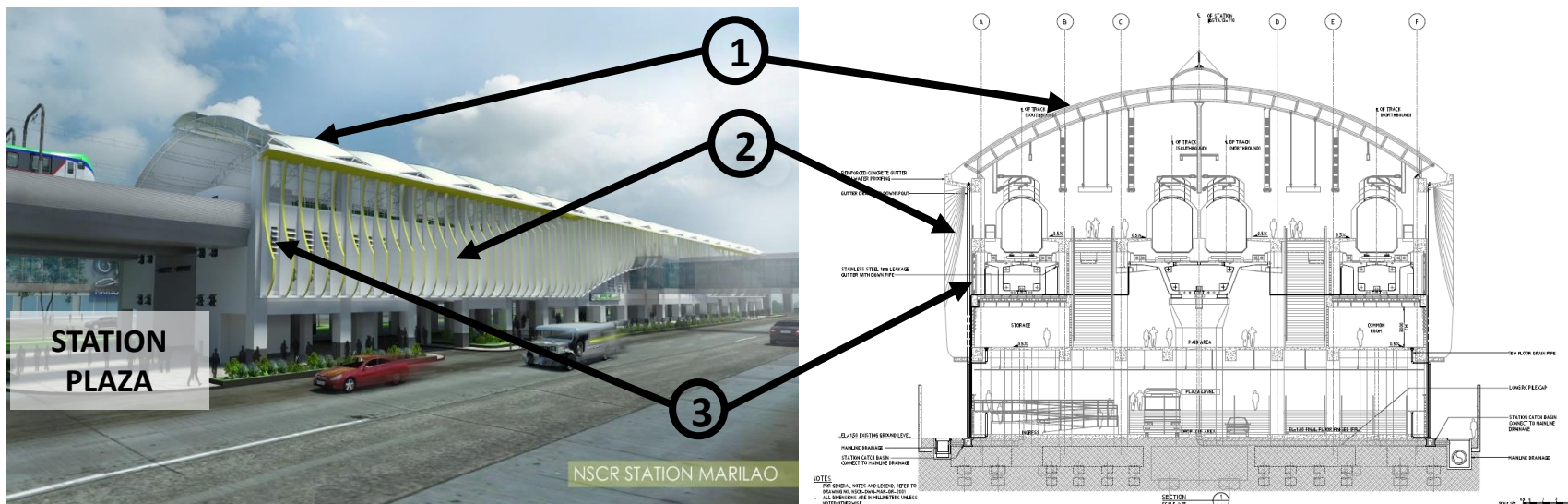


GUIGUINTO STATION: 3- LEVEL OUTBOARD STATION

STATION PLAZA SCOPE OF WORKS

1. PAVEMENT
2. DRAINAGE
3. LIGHTING

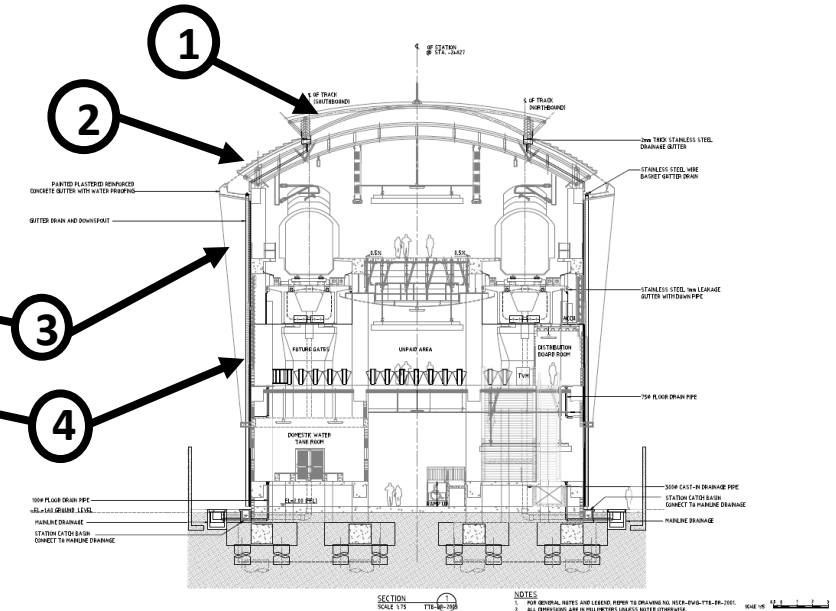
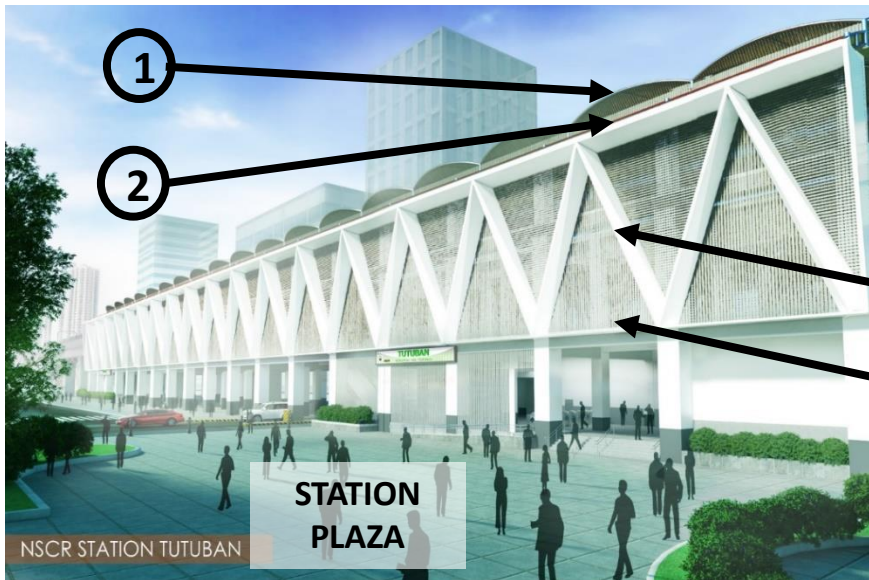
NSCR STATIONS (Double Island Type)



MARILAO STATION: 3- LEVEL DOUBLE-ISLAND STATION

1. **PTFE TENSION MEMBRANE ROOFING** – *Supplier must have 20 years of manufacturing and installing experience*
2. **ACM/ ALUMINUM HONEYCOMB PANEL FINs** - *With 3-coat and 3-bake system e.g. FEVE or PVDF coating*
3. **SUN-CONTROL LOUVERS** – *Extruded aluminum aerofoil design with PVDF coating*

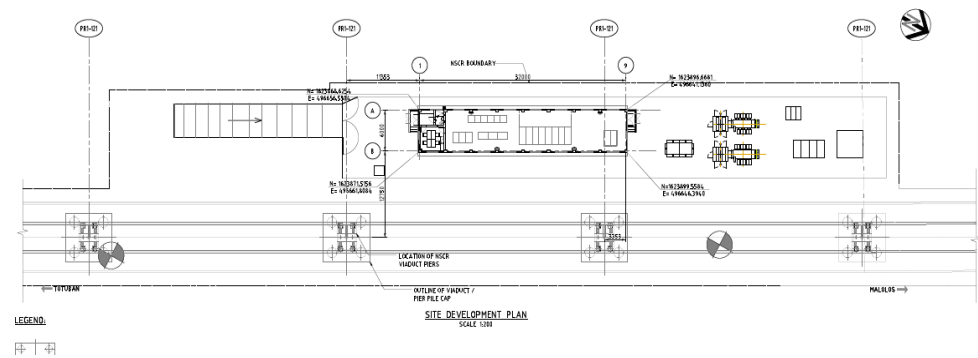
NSCR STATIONS (Island Type)



TUTUBAN STATION: 3- LEVEL ISLAND STATION

1. **PTFE TENSION MEMBRANE ROOFING** – *Supplier must have 20 years of manufacturing and installing experience*
2. **SPANISH TYPE METAL ROOFING** – *Pre-painted Metal Roof panels*
3. **ACM/ ALUMINUM HONEYCOMB PANEL FINIS** - *With 3-coat and 3-bake system e.g. FEVE or PVDF coating*
4. **SUN-CONTROL LOUVERS** – *Perforated Folded Metal plate aero screen design with PVDF coating*

NSCR MAINLINE TRACTION SUBSTATION



TOTAL NUMBER OF SUBSTATION = 9

- 6 SUBSTATION FOR CP01
- 3 SUBSTATION FOR CP02



Valenzuela Depot Layout

The depot and the workshop are planned to be constructed between Old Valenzuela Station and Meycauayan Station in northern Valenzuela City and its total area of the depot is around 14 hectares.

Track structure in the depot is Ballasted Track.

There are administrative offices and maintenance structures mainly as below:

- Light repair shop
- OCC building
- Workshop
- Wheel re-profiling shop
- Unscheduled repair track
- Test track
- Lead tracks
- Eighteen (18) storage tracks
- Car washing track
- Wheel re-profiling track
- Stabling track &
- Three (3) repair tracks



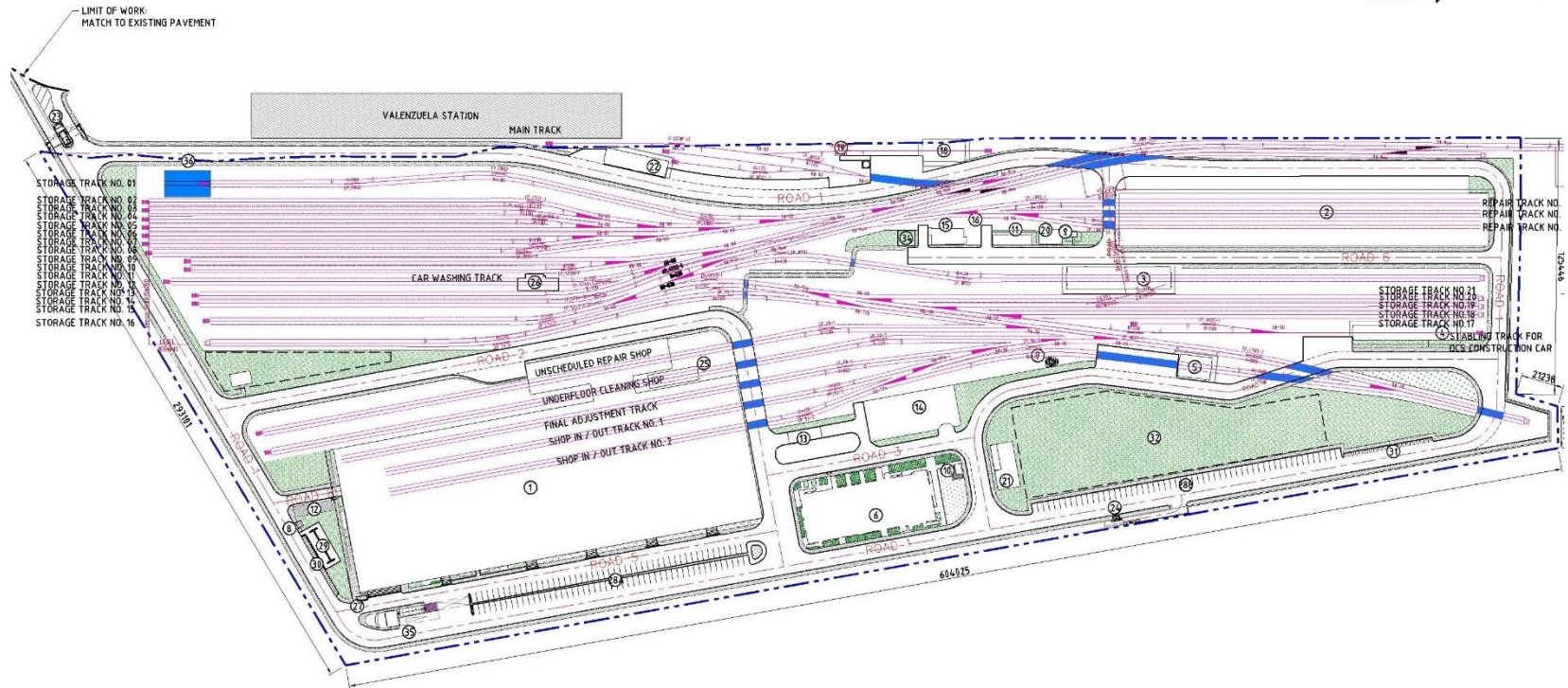
Valenzuela Depot Layout

CP01-B8-00



← TUTUBAN

MALDOS →



LEGEND:

- | | | |
|--------------------------------------|--|---|
| ① WORKSHOP | ⑭ SUB STATION 1 | ⑳ FUEL PUMP TANK FOR BOILER IN WORKSHOP |
| ② LIGHT REPAIR SHOP | ⑮ SUB STATION 2 | ㉓ CAR PARKING (UNCOVERED) - 100 SPACES |
| ③ WHEEL RE-PROFILING SHOP | ⑯ DISTRIBUTION BOARD SPACE 1 | ㉔ CAR PARKING (UNCOVERED) - 56 SPACES |
| ④ CATENARY MAINTENANCE VEHICLE SHOP | ⑰ DISTRIBUTION BOARD SPACE 2 | ㉕ COVERED BICYCLE PARKING |
| ⑤ SHUNTING CAR SHOP | ⑱ MAINTENANCE CAR SHOP | ㉖ COVERED MOTORBIKE PARKING |
| ⑥ OGC BUILDING | ⑲ FUEL PUMP FOR MAINTENANCE CAR | ㉗ OPEN MOTORBIKE PARKING (44 SPACES) |
| ⑦ FUEL PUMP HOUSE 1 | ⑳ FIRE WATER TANK AND PUMP HOUSE (LRS) | ㉘ DETENTION BASIN 1 |
| ⑧ OIL STORAGE FOR WORKSHOP | ㉑ WATER PUMP HOUSE | ㉙ DETENTION BASIN 2 |
| ⑨ OIL STORAGE FOR LIGHT REPAIR SHOP | ㉒ TRACK MAINTENANCE OFFICE | ㉚ DEPOT YARD MASTER ROOM |
| ⑩ HAZARDOUS STORE | ㉓ SECURITY HOUSE 1 | ㉛ UNLOADING DOCK |
| ⑪ GARBAGE SHED FOR LIGHT REPAIR SHOP | ㉔ SECURITY HOUSE 2 | ㉜ TRAIN DELIVERY LOCATION |
| ⑫ GARBAGE SHED FOR WORKSHOP | ㉕ RAIL CAR WATER TIGHTNESS TEST SYSTEM | REQUIREMENTS FOR ㉝ |
| ⑬ TRUCK GARAGE | ㉖ CAR WASHING TRACK | HARDSTANDING RAIL LEVEL FOR HEAVY LOADS |
| | | ROAD VEHICLE TURNING SPACE |
| | | NO OVERHEAD CATENARY |
| | | DETAILS DEPEND ON TRANSFER METHOD |





NSCR DEPOT OPERATION CONTROL CENTER

OCC BUILDING

(Approx. 26m high)

KEY FEATURES:

- **VERTICAL SUNCONTROL LOUVER- Extruded Aluminium with PVDF Coating**
- **ALUMINIUM COMPOSITE MATERIAL EXTERIOR FACADE – Aluminium Composite Honey combed Panel**



NSCR DEPOT LIGHT REPAIR SHOP

LIGHT REPAIR SHOP

(Approx. 10m high)

KEY FEATURES:

- **LARGE GLASS PANELS – Laminated, heat reflective glass**
- **INSULATED METAL ROOF AND WALL PANELS – Fire Rated and self extinguishing sprayed insulation with Top and Bottom metal skin**



NSCR DEPOT WORKSHOP

HEAVY REPAIR WORKSHOP

(Approx. 18m high)

KEY FEATURES:

- **LARGE GLASS PANELS – Laminated, heat reflective glass**
- **INSULATED METAL ROOF AND WALL PANELS – Fire Rated and self extinguishing sprayed insulation with Top and Bottom metal skin**

Key Project Information

- **The Borrower:** The Government of the Republic of the Philippines
- **The Employer:** The Department of Transportation (DOTr)
- **The End-User:** The Philippine National Railways (PNR)
- **Procuring Agent:** Procurement Service of the Department of Budget and Management (PS-DBM)
- **Funding Source:** Japan International Cooperation Agency (JICA) ODA Loan Agreement No. PH-P262 dated 27 November 2015, under the Special Terms for Economic Partnership (STEP) of Japanese ODA Loans, February 2017.

Key Project Information

- **STEP Requirement:** Total costs of goods and services procured from Japan as a percentage of the Accepted Contract Amount, including Provisional Sums, shall be not less than:
CP01: 16% ~ CP02: 13%
- **Invitation For Bids (IFB) No:**
CP01: 18-130-1 ~ CP02: 18-131-1
- **Procurement Method:** International Competitive Bidding (ICB), in accordance with JICA Guidelines for Procurement under Japanese ODA Loans (April 2012), utilizing JICA Standard Bidding Documents (SBD) for 'Procurement of Works' October 2012 utilizing:
 - Part 1 – Bidding Procedure Option B: Single-Stage Two-Envelope (Without Prequalification); and
 - The General Conditions of Contract are the Multilateral Development Bank (MDB) Harmonized Edition of the Conditions of Contract for Construction, FIDIC 2010 (referred to as the FIDIC Pink Book)

Key Project Information

Bidder's Eligibility:

- The eligible Nationality of the Supplier(s) shall be the following as specified in the Operational Rules of Special Terms for Economic Partnership (STEP) of Japanese ODA Loans, February 2017:
 - a. Japan in the case of the prime contractor; and
 - b. All countries and areas in the case of the sub-contractor(s).

With regard to the above, in a case where the prime contractor is a joint venture, such joint venture will be eligible provided that the nationality of the lead partner is Japan, that the nationality of the other partners is Japan and/or the Republic of the Philippines, and that the total share of work of Japanese partners in the joint venture is more than 50% of the contract amount.

Key Project Information

Summary of Key Date Schedule for both CP01 & CP02:

- Major Civil & Building Works Completion = 30 months from Commencement Date
- Completion of the whole of the Works = 42 months from Commencement Date
(Issue of Taking-Over Certificate)
- Defects Notification Period = 12 months
(From Taking Over Certificate to issue of Performance Certificate)

Other Key Date Schedules:

- To obtain Key Date Schedules for all Contract Packages (CP01, CP02, CP03 & CP04), refer in each Contract Package to Bidding Documents Volume IV. Part 3 – Conditions of Contract and Contract Forms, Section VIII. “Attachment to the Particular Conditions Part A: Contract Data, Summary of Key Dates”

Bid Timeline

- Invitations for Bids: **18 May 2018**
- Site Visit: **31 May 2018**
- Pre-Bid Conference: **1 June 2018**
- Last Day for Bidders to submit Requests for Clarifications: **2 August 2018** (14 days before the Bid Submission deadline date)
Such questions shall be submitted officially in writing in accordance with ITB 7.1
- Submission of Bids Deadlines / Opening of Technical Bids:
16 August 2018: CP01 at 09:00 AM and CP02 at 1:00 PM

Note: Bidders may request additional Site Visits in accordance with the “Guidelines to the Site Visit” attached in Volume V, Part 4 Site Data of the Bidding Documents, and as modified in General Bid Bulletin (GBB) No. 1 (24 May 2018).

Composition of Bid Summary

The Bid shall comprise two (2) sealed envelopes submitted simultaneously:

- **Technical Bid Envelope**

To be opened on the Technical Bid opening deadline date.

- **Price Bid Envelope**

To remain sealed and held in safekeeping until the Price Bid opening date and time is advised by the Procuring Agent. Following Technical Bid Evaluation, only the Price Bids for which the Technical Bids have been found to be substantially responsive, will be opened.

Both envelopes shall be enclosed together on submission in an outer single envelope.

Technical Bid

Reference ITB 11.2 The Technical Bid shall comprise the following :

- (a) Letter of Technical Bid;**
- (b) Bid Security, in accordance with ITB 19** (Security shall be valid 210 +28 days after the Bid Submission deadline);

CP01	Japanese Yen One Billion Three Hundred Million (JPY 1,300,000,000)
CP02	Japanese Yen Eight Hundred Million (JPY 800,000,000)

- (c) alternative Bids are not permissible;**
- (d) written confirmation authorizing the signatory of the Bid to commit the Bidder, in accordance with ITB 20.2;**
- (e) documentary evidence, in accordance with ITB 17 establishing the Bidder's qualifications to perform the contract if its Bid is accepted**
Refer to Volume 1. Section III. Evaluation and Qualification Criteria (EQC) and Section IV. Bid Forms;

Technical Bid (continued)

(f) Technical Proposal in accordance with ITB 16

Refer to Volume I. Section IV. Appendices to Letter of Technical Bid - Appendix 4, and various Bidding Forms;

(g) Acknowledgement of Compliance with Guidelines for Procurement under Japanese ODA Loans (Form ACK)

Refer to Volume I. Section IV. Bidding Forms, Appendices to Letter of Technical Bid - Appendix 5, and Bidding Form ACK;

(h) Any other document required in the BDS

(Volume 1. Section II. Bid Data Sheet which compliments the ITB)

Refer also to Volume 1. Section IV. Bidding Forms, Appendices to Letter of Technical Bid - Appendix 7: Bid Index.

Reference ITB 11.4:

JV Agreement or letter of intent to form (if applicable)

Technical Bid (continued)

Basis for rejection of Bids:

IFB, Paragraph 7: Copy of proof of payment for the Bidding Documents shall be attached to the Technical Bid envelope only; otherwise, the Bid shall be rejected.

ITB 29.2: ...If any of these documents or information is missing, **the Bid shall be rejected.**

- (a) Letter of Technical Bid;**
- (b) Written confirmation of authorization to commit the Bidder;**
- (c) Bid Security; and**
- (d) Technical Proposal in accordance with ITB 16.**

Price Bid

Reference ITB 11.3 The Price Bid shall comprise the following:

(a) Letter of Price Bid;

(b) Completed Price Schedules, in accordance with ITB 12 and 14:

Schedule 1: Bill of Quantities (BOQ);

Schedule 2: Schedule of Adjustment Data (refer ITB 14.5); and

Schedule 3: List of Japanese Origin, Goods and Services.

(c) No Alternative Bids are permitted.

Packing, Sealing and Marking of Bids for Submission

Technical Bid & Price Bid

(Reference: ITB 21.1 to 21.5 – Submission, Sealing and Marking of Bids)

Information to be written on the Inner & Outer Envelopes of
Technical Bid, Price Bid:

Bidding for:

Package CP01: Elevated Structures,
7 Stations and Depot
(or as applicable)

Package CP02: Elevated Structures
and 3 Stations

JICA Loan No.: PH-P262

IFB No.: 18-130-1 (CP01)

(or as applicable)

IFB No.: 18-131-1 (CP02)

To Be Addressed to (Reference: BDS 22.1):

Attention:

Mr. Ariel R. Cunanan

CHAIRPERSON

Bids and Awards Committee I

Address:

Procurement Service

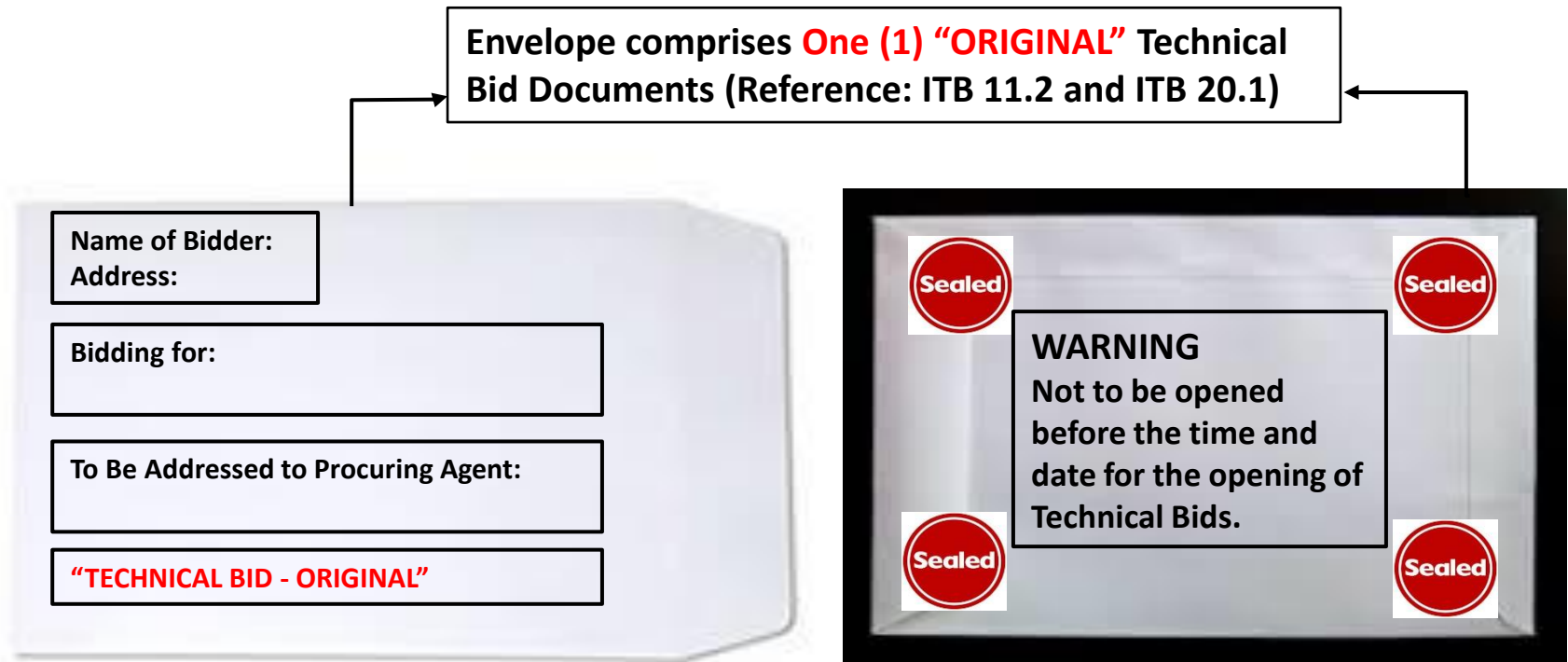
PS-DBM Compound

RR Road, Cristobal Street, Paco, Manila

1007 Philippines

Envelopes

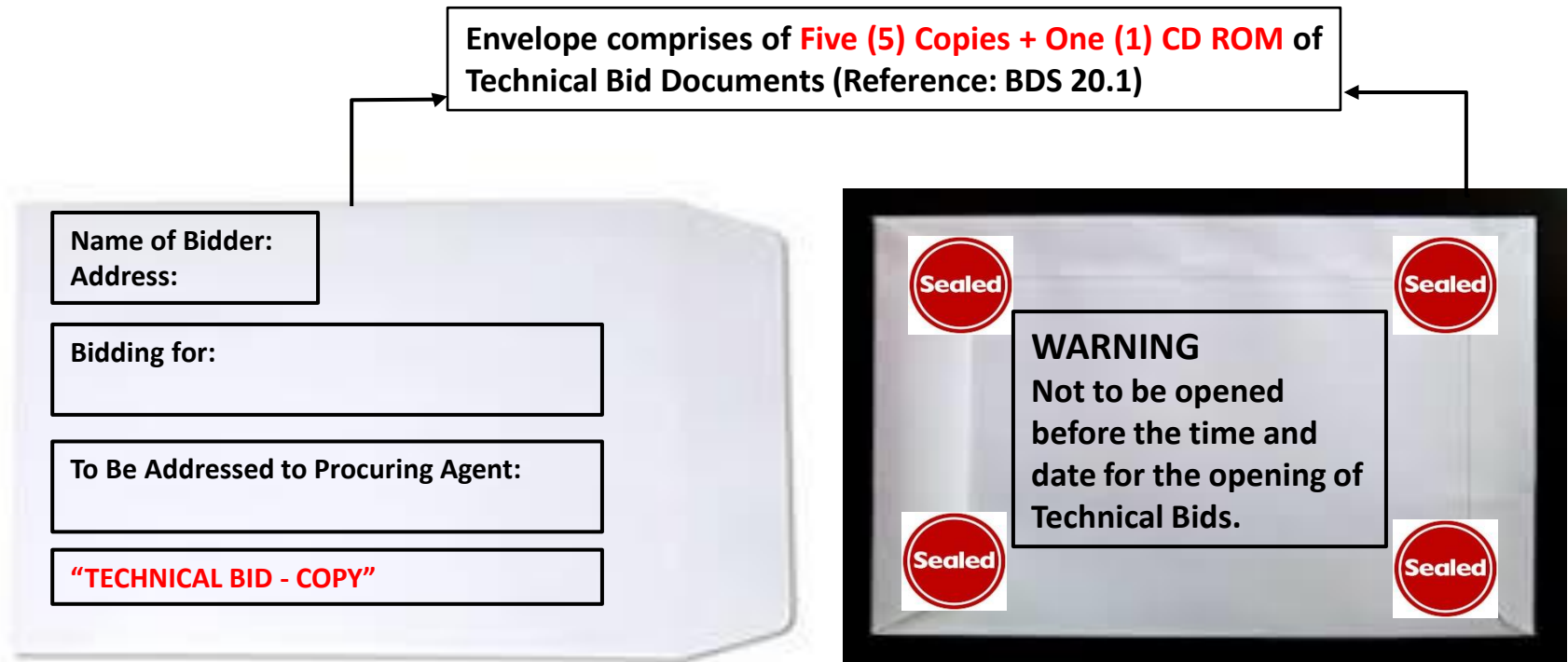
Technical Bid Documents (Marked “TECHNICAL BID - ORIGINAL”)
“One (1) Original”



Envelopes

Technical Bid Documents (Marked “TECHNICAL BID - COPY”)

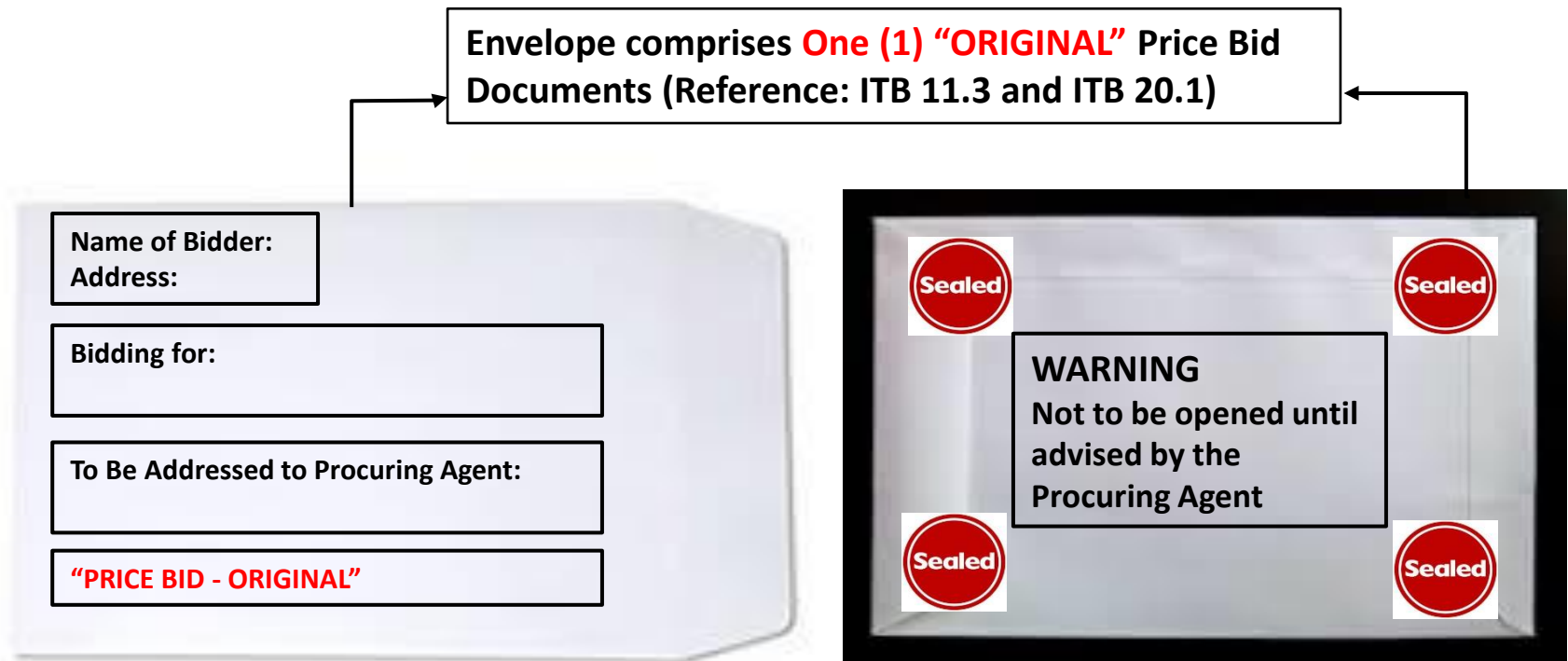
“Five (5) Copies + 1 CD ROM”



Envelopes

Price Bid Documents (Marked “PRICE BID - ORIGINAL”)

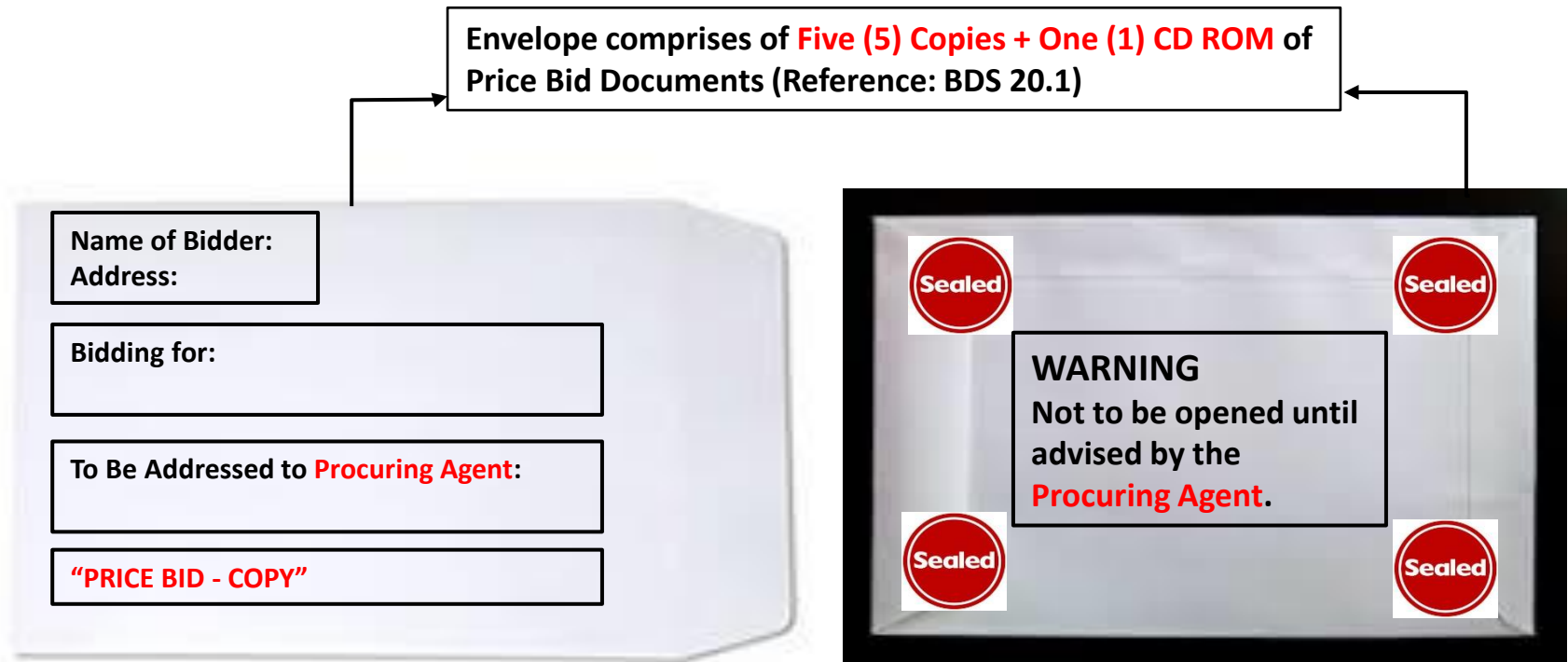
“One (1) Original”



Envelopes

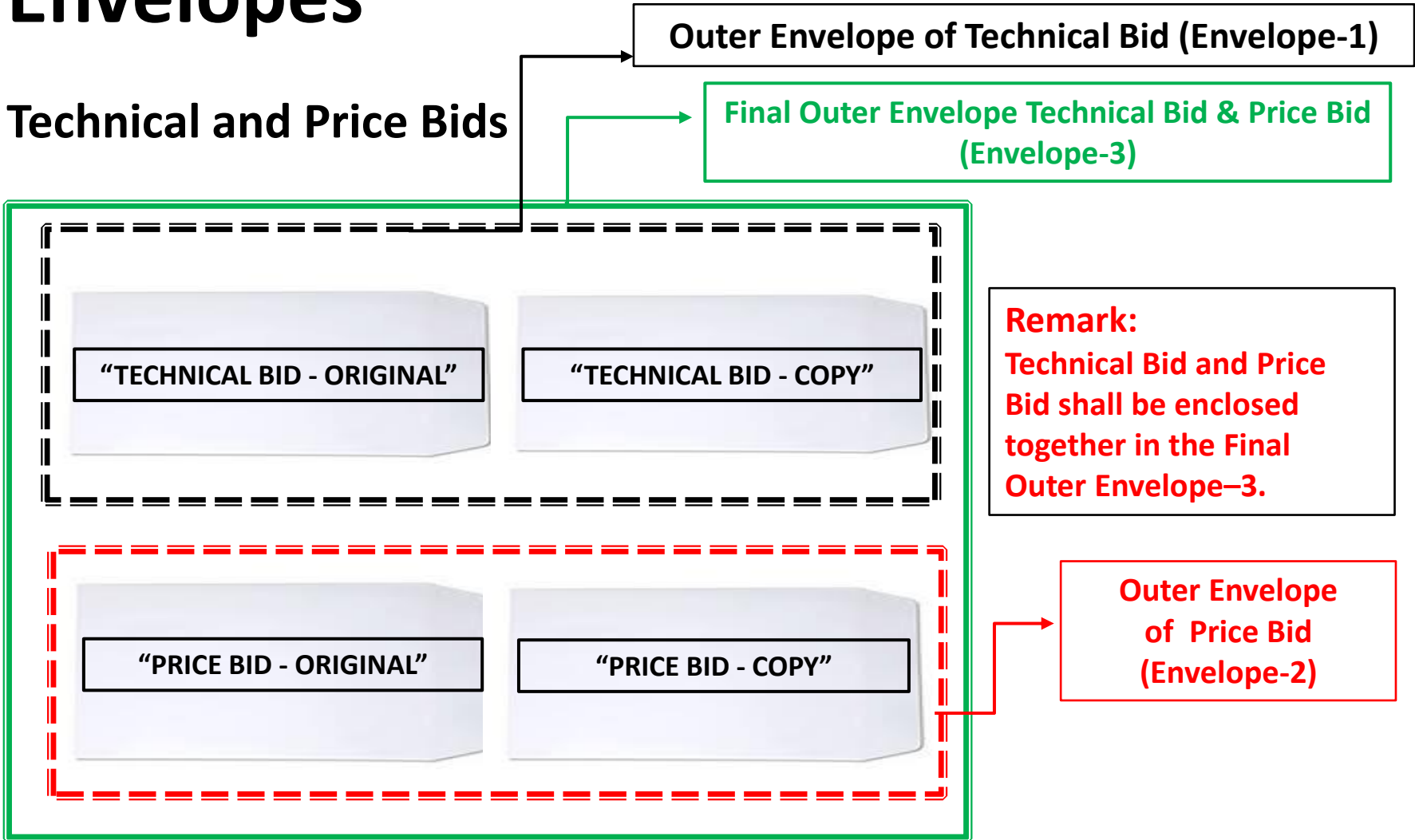
Price Bid Documents (Marked “PRICE BID - COPY”)

“Five (5) Copies + 1 CD ROM”



Envelopes

Technical and Price Bids



Remarks

Outer Envelope of Technical Bid (Envelope-1)

Outer Envelope of Price Bid (Envelope-2) and

FINAL outer Envelope (Envelope-3) consists of Envelope-1 and **Envelope-2**

All envelopes must have the following:

- **Name of Bidder:** !
Address: !
- **Bidding for:** !
- **To Be Addressed to Procuring Agent :** !
- **WARNING** !

Reference:

**ITB 11.2 & 11.3,
BDS 20.1, ITB 21.1
to 21.5, BDS 22.1
and ITB 25.1**



Reminder:

ITB 6.4 (Quote):

“The Bidder is expected to examine all instructions, forms, terms, and specifications in the Bidding Documents, and to furnish with its Bid all information and documentation as is required by the Bidding Documents”.

Nothing in this Pre-Bid Conference Agenda shall change the terms and conditions of the Bidding Documents.

Requests for clarifications must be followed up in writing and the BAC will respond in writing by issuing Bid Bulletins uploaded to the websites of PS-DBM, DOTr and PNR.

QUESTIONS & ANSWERS

End of Presentation