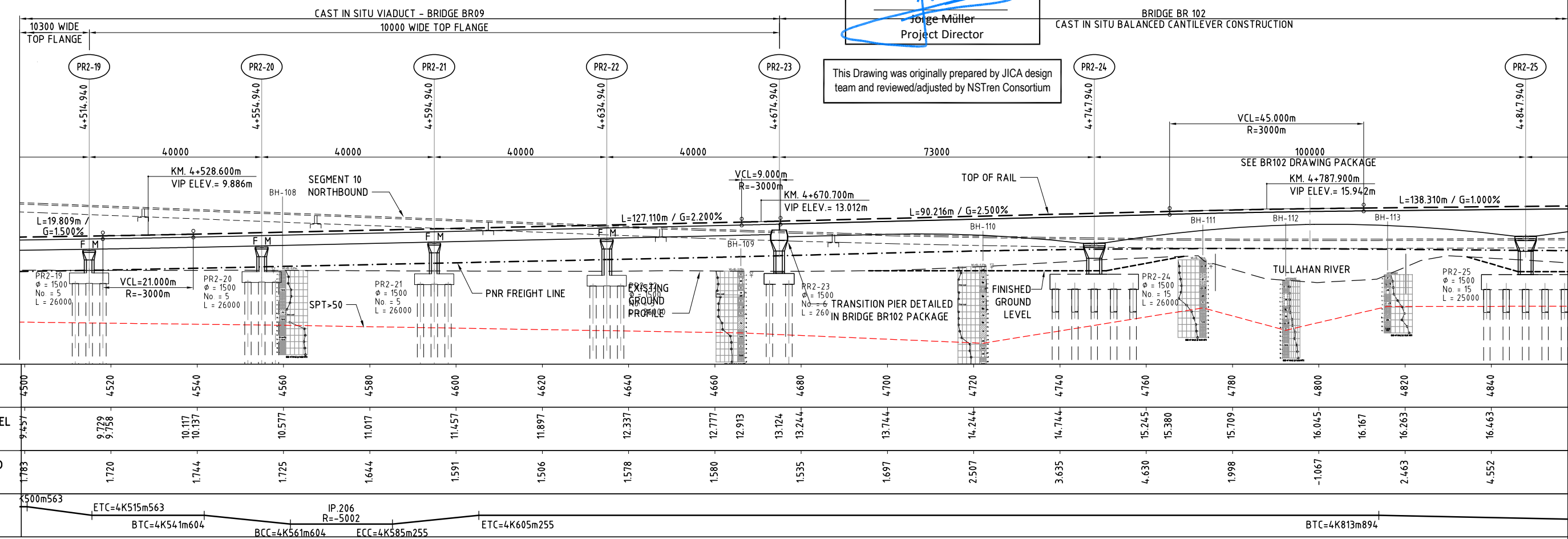


PLAN SCALE 1:500

Reviewed by NSTren
[Signature]
 Jorge Müller
 Project Director

- NOTES:**
- FOR GENERAL NOTES, REFER TO DWG. No. NSCR-DWG-VIA00-ST-0030.
 - FOR TYPICAL CROSS SECTION, REFER TO DWG. No. NSCR-DWG-VIA00-ST-0060 SERIES.

LEGEND:
 ⊕ BOREHOLE (NSCR)



ELEVATION SCALE 1:500

*NOTE: PROFILE ARE SUBJECT TO CHANGE

VER	DATE	DESCRIPTION
01	25 OCT 2017	REVISION CLOUDS REMOVED

DEPARTMENT OF TRANSPORTATION
 REPUBLIC OF THE PHILIPPINES

PHILIPPINE NATIONAL RAILWAYS

JICA JAPAN INTERNATIONAL COOPERATION AGENCY (JICA)

DESIGN CONSULTANT

JICA DETAILED DESIGN STUDY TEAM

ORIENTAL CONSULTANTS GLOBAL CO., LTD.

KATAHIRA & ENGINEERS INTERNATIONAL

PACIFIC CONSULTANTS CO., LTD.

JAPAN INTERNATIONAL CONSULTANTS FOR TRANSPORTATION CO., LTD.

TONICHI ENGINEERING CONSULTANTS INC.

TITLE	JDT	SMEC
DESIGNER	T. OMORI	R. ACOSTA, JR.
CHECK	I. HAYASHI	V. BALAKRISHNAN
TEAM LEADER	N. MATSUMOTO	J. BARNES
PROJ. MANAGER	M. MIYATA	R. YUZON, JR.

THE DETAILED DESIGN STUDY OF THE NORTH-SOUTH COMMUTER RAILWAY PROJECT (MALOLOS-TUTUBAN)

DETAILED DESIGN

VIADUCT 02
 GENERAL ARRANGEMENT
 KM. 4+500 TO 4+850

DATE	OCTOBER 2017
SCALE	AS SHOWN
SHEET No.	
DRG No.	NSCR-DWG-VIA02-ST-0019
DRG S.	REV 02