

PRE-BID CONFERENCE



**The Malolos to Clark Railway Project (MCRP)
for
Package Nos. CP N-04 and CP N-05**

30 May 2019

Presentation Outline

1. Introduction & Project Features

- i. Alignment, Stations and Key Features
- ii. Typical Constraints and Interfaces

2. Government Procurement Process

- i. Governing Rule: ADB Guideline
- ii. Bid and Contract Method
- iii. Procurement Timeline
- iv. Communication Protocols
- v. Key Qualification & Criteria
- vi. Evaluation Criteria

3. Q & A Session

Disclaimer

- Any statement made at the Pre-Bid Conference does not modify the terms of the Bidding Documents, unless such statement is specifically identified in writing as an official Addendum through a Bid Bulletin.
- The Pre-Bid Conference is also an opportunity for the prospective Bidders to request for clarifications about the Bidding Documents. However, such request must be followed up in writing and BAC IV will respond in writing by issuing Bid Bulletins uploaded to the websites of PS-DBM, DOTr and PNR as follows:

www.ps-philgeps.gov.ph

www.dotr.gov.ph

www.pnr.gov.ph

INTRODUCTION and PROJECT FEATURES:

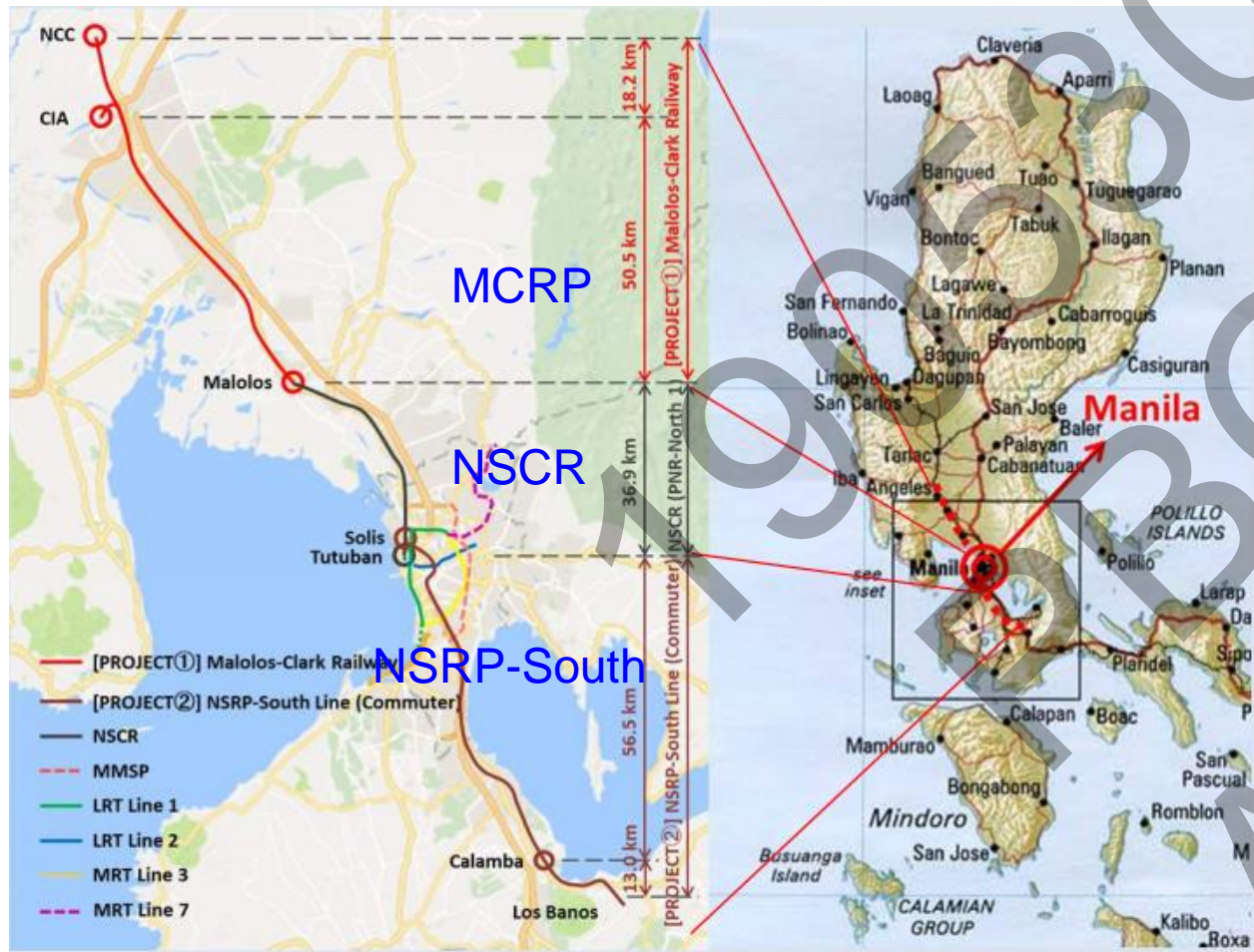
190530;
PBC;
ADB



CP N-04 and CP N-05: Alignment & Stations, Key Features

1995
PBB
ADB

Overview of NSCR Project and Extensions

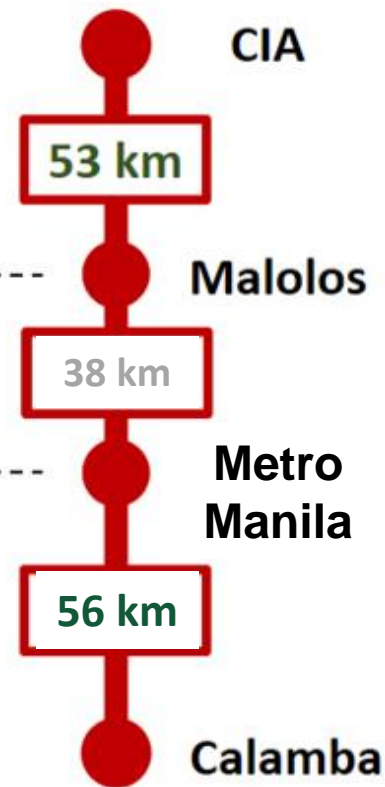


Malolos to Clark Railway Project (MCRP) a.k.a.

NSCR-Clark Extension (PNR Clark Phase 2)

North-South Commuter Railway (NSCR) (PNR Clark Phase 1)

NSCR-Calamba Extension (PNR Calamba)



Train Services



Overview of MCRP's Civil Contract Packages: CP N-04 and N-05

- Package CP N-04:
6.6km of railway track and 1.2km of depot access track structures; One underground station at Clark International Airport (CIA).
- Package CP N-05:
Depot buildings in 33ha Depot Site, with total building area of about 8,400 gross sqm; Including: Control Center, Main Workshop, Repair Shop, related infrastructure, track works and other civil works within the Depot

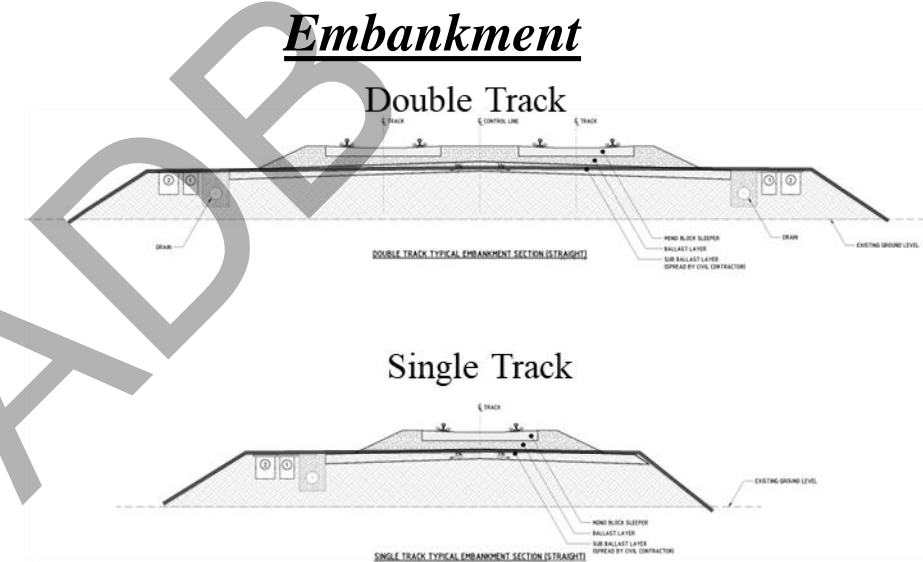
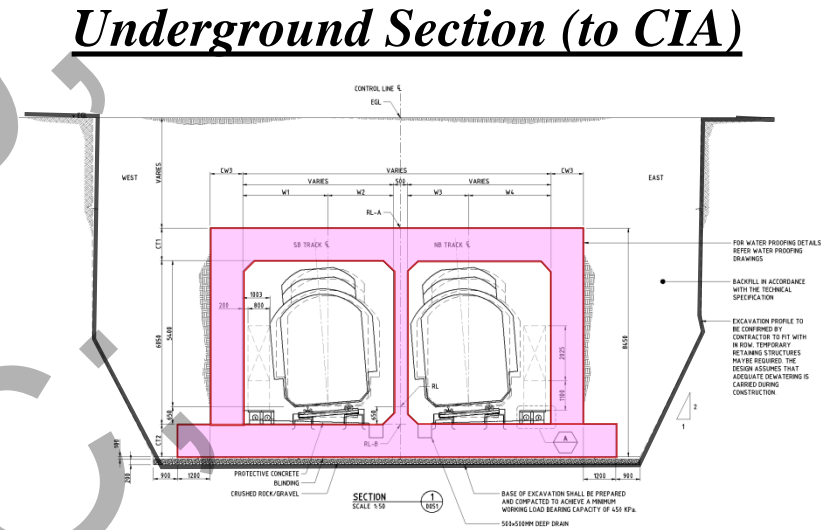
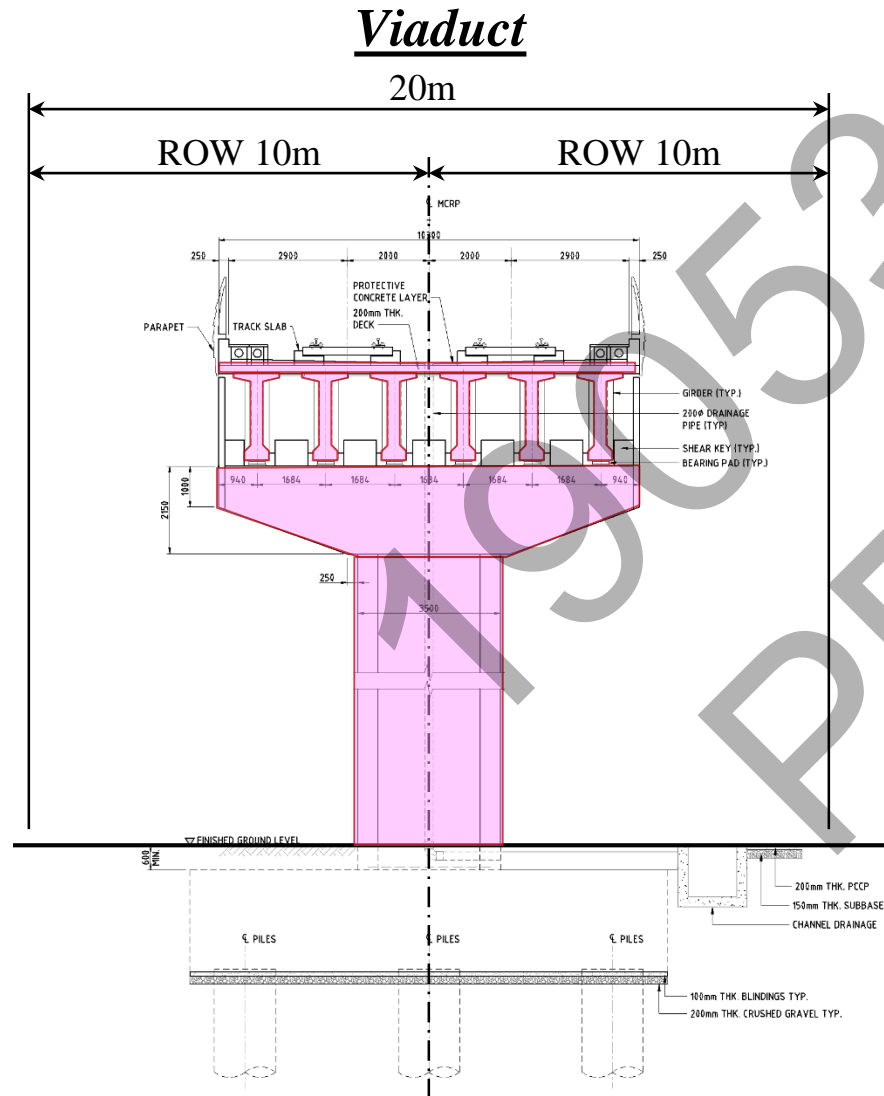


MCRP (N2) – CP N-04: Civil Works Summary

Railway Civil Works:

- 1) Viaduct/Box Structure/Bridge 2.4km**
- 2) At-Grade (Embankment) 2.3km**
- 3) Underground 3.1km**
- 4) One Underground Station at Clark Int. Airport**
- 5) 350m Steel Bridge Over SCTEX**
- 6) One 210m (3-span) Balanced Cantilever Bridge**
- 7) Quitangil River Diversion**

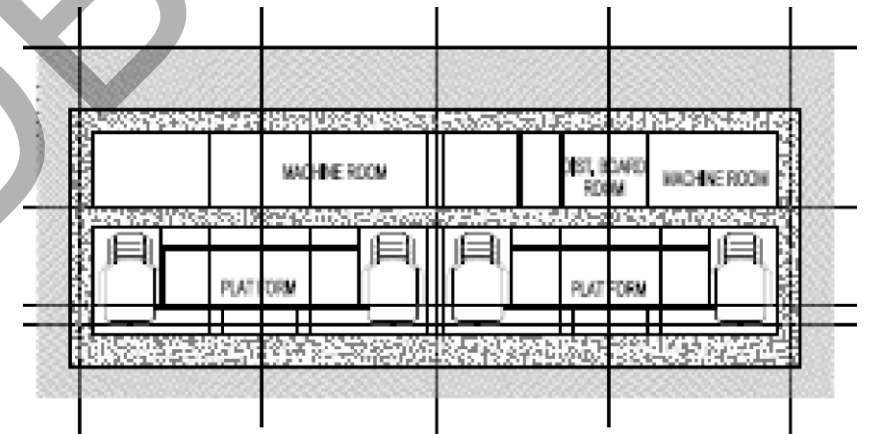
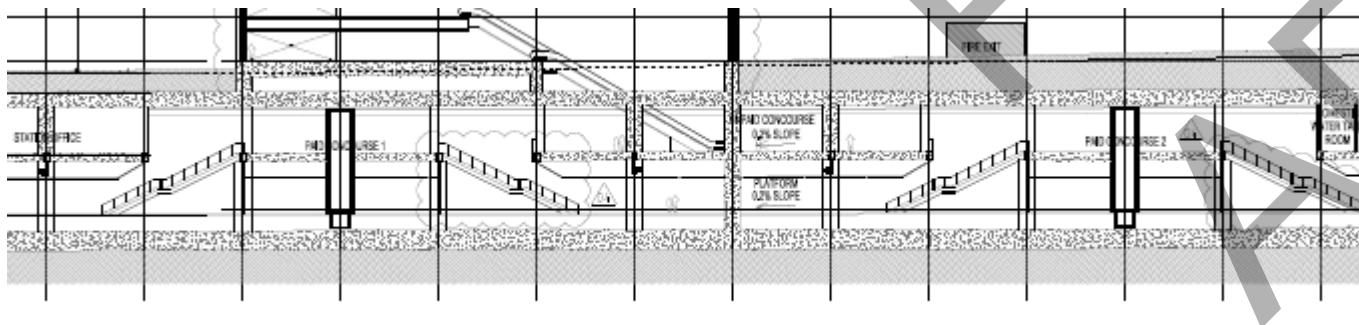
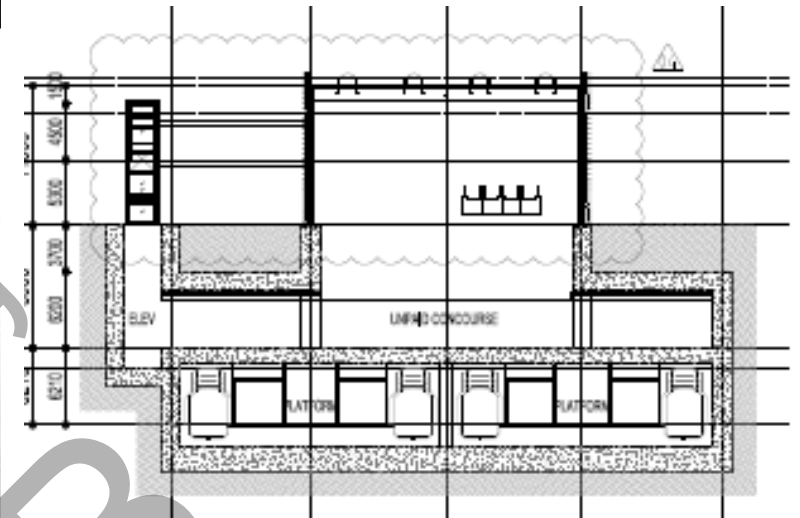
MCRP (N2) – CP N-04 : Civil Works – Typical Sections ¹⁰



Clark International Airport (CIA) – Station



2 Platforms 4 Tracks



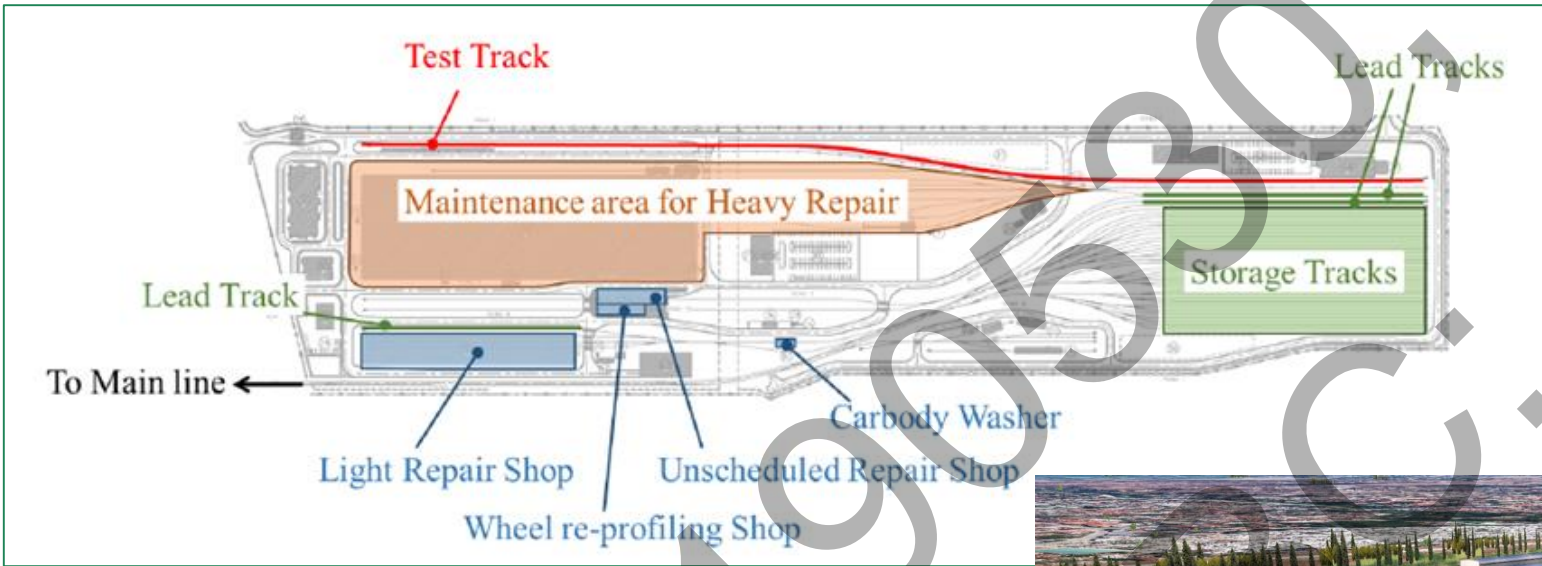
Main Buildings in 33ha of Depot Area – Civil Works

- 1) Main Workshop – 54,000 (gross sqm)
- 2) OCC Building – 12,000 (gross sqm)
- 3) Light Repair Shop(s) 9,000 (gross sqm)
- 4) Training Center – 3,000 (gross sqm)
- 5) Other Buildings – 6,000(gross sqm)

Total Building Floor Area ~ 84,000 (gross sqm)

- **Stabling of 33 Trains (26 Commuter & 7 Express)**
- **2 Lead Tracks**
- ***Dolores River Diversion***

MCRP CP N-05 – Depot Layout and Main Workshop



MCRP DEPOT WORKSHOP

MCRP CP N-05, Depot Operational Control Center



MCRP CP N-05, Depot Other Buildings (Repair shop)



Typical Constraints and Interfaces

190030,
PBB
ADB

MCRP (N2) – CP N-04: Clark-CIA, Depot Access & CIA Station

Interfaces and Possible Constraints

- Liaison with Civil Aviation Authority and CIAC:**
 - Possible height restrictions (for cranes etc.)
 - Night time work restrictions
 - Access issues due to airport and other secure areas
- Liaison with NLEX Corp and BCDA for Road Closures and Working over SCTEX**
- Liaison with BCDA for Quitangil River Diversion**
- Liaison with BCDA – Gil Puyat Road Underpass**
- Possibility of UXO**

Interfaces and Possible Constraints

- Liaison with Civil Aviation Authority and CIAC:**
 - Possible height restrictions (for cranes etc.)
 - Night time work restrictions
 - Access issues due to airport and other secure areas
- Liaison with BCDA for Dolores River Diversion**
- Liaison with BCDA for Access Road Arrangements**
- Liaison with DENR to Cut / Replace Trees**
- Possibility of UXO**

GOVERNMENT PROCUREMENT PROCESS

190530;
PBC;
ADB



Governing Rules

- **PROCUREMENT: APPROACH/TYPE OF PROCUREMENT**

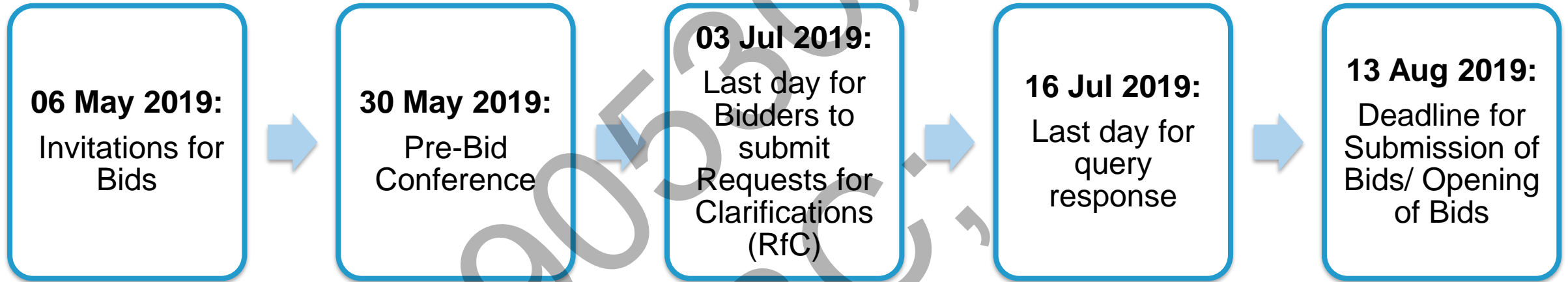
- Follow ADB guidelines for procurement of Civil Works.
- Follow JICA guidelines for procurement of Rolling Stock and E&M Systems.



Bid and Contract Method

Package	ADB financed Civil / Station Works
Bidding System	<ul style="list-style-type: none"> • Open Competitive Bidding, • Single-Stage One-Envelope Bidding (Without Pre-qualification procedure)
Eligible Nationality of Bidder	Prime Contractor / JV Partners / Sub-contractors : ADB Member Countries
Contract Type	Design by the Employer Re-Measurement Unit Price Contract
Procurement Guideline	Procurement Regulations for ADB Borrowers, 2017
Applicable Standard Bidding Document	ADB SBD-Procurement of Works-Single-Stage: One-Envelope Bidding Procedure without Pre-qualification
Applicable General Conditions	FIDIC Conditions of Contract for Construction Designed by the Employer: Multilateral Bank Harmonized Edition, 2010 (FIDIC-Pink Book)
Eligible Countries for Procurement of Goods and Services	ADB Member Countries

Procurement Timeline



Note:

Bidders may request Site Visits in accordance with ITB 7.2 and ITB 7.3.

Request for Site Visit to Facilities in Clark

- Submit **Confirmation Form** via fax and email at least **three (3) working days** before the desired date and time to BAC.

Mr. Ariel R. Cunanan
The Chairperson
Bids and Awards Committee for CP N-04 and CP N-05
Procurement Service
PS-DBM Complex,
RR Road, Cristobal Street,
Paco, Manila 1007
Philippines
Telephone No: (+63 2) 689 7750 loc. 4002
Facsimile No.: (+63 2) 561 7025
Email Address : pd10@ps-philgeps.gov.ph

- A maximum of **8 representatives** per Bidder will be allowed to join the site visit

Communication Protocol for Request-for-Clarification (RfC)

Clarification on the Bidding Documents
(ITB 7.1)

Raise inquiries during Pre-bid Conference, must be followed up in writing

Contact the Employer in writing, using Attachment 1 to the Bid Data Sheets (BDS) & online Bid Query Submission Form

The Malolos to Clark Railway Project						
CP N-01 - Apx. 17 Km of Viaduct Structure with Station Buildings at Calumpit and Apalit						
Name of Prospective Bidder			<i>(insert name of bidder)</i>			
Date of Submission of Query			<i>(insert date of submission of query)</i>			
Item No.	Volume & Section No.	Page No.	Clause No./Title	Reference Text (if necessary)	Clarification Request	Proposed Revised Text (if any)

Attachment 1 to the Bid Data Sheets
Template for Clarification Requests

Bid Query Submission Form



<https://goo.gl/forms/33ydK5viZMo9h09H2>

Key Qualification & Criteria: CP-N-04

	Key Qualification**	Criteria**
Financial Standing	Average Annual Construction Turnover	Bidder must have Average Annual Turnover of Over US\$ Nine Hundred Million (900,000,000). [Ref: Item 2.3.2]
	Available Financial Resources	Bidder must have minimum available finances of US\$ Sixty Million (60,000,000), per package. [Ref: Item 2.3.3]
	Experience Contracts of Similar Value	In the past ten years have substantially completed at least one project of over US\$ Four Hundred Fifty Million (450,000,000). [Ref: Item 2.4.1]

*Note – Refer Volume I, Part 1, Section 3, EQC Item 2.4.2;

** The Bidding Documents will prevail in case of any discrepancy between this Table and the Bidding Documents

Key Qualification & Criteria: CP-N-04

Key Qualification**		Criteria**
Specific Experience	Cut and Cover Tunnel	Bidder must have experience at least two projects of cut and cover tunnel having more than 10m wide, 6m high, and 500m long.*
	Underground Station	Bidder must have experience of at least one project including an underground railway station by cut and cover method.*
	Viaducts	Bidder must demonstrate he has experience of building Railway or Road viaducts of minimum length of 1km.*

*Note – Refer Volume I, Part 1, Section 3, EQC Item 2.4.2;

** The Bidding Documents will prevail in case of any discrepancy between this Table and the Bidding Documents

Key Qualification & Criteria: CP-N-05

Key Qualification**		Criteria**
Financial Standing	Average Annual Construction Turnover	Bidder must have Average Annual Turnover of Over US\$ Five Hundred Million (500,000,000) per package. [Ref: Item 2.3.2]
	Available Financial Resources	Bidder must have minimum available finances of US\$ Thirty Million (30,000,000), per package. [Ref: Item 2.3.3]
	Experience Contracts of Similar Value	In the past ten years have substantially completed at least one project of over US\$ Two Hundred Sixty Million (260,000,000). [Ref: Item 2.4.1]

*Note – Refer Volume I, Part 1, Section 3, EQC Item 2.4.2;

** The Bidding Documents will prevail in case of any discrepancy between this Table and the Bidding Documents

Key Qualification & Criteria: CP-N-05

Key Qualification**		Criteria**
Specific Experience	Steel Structure	Bidder must have at least two project for steel structure workshop or similar structure. Each project shall have floor area of more than 5,000sqm of one building.
	Reinforced Concrete Building	Bidder must have at least two (2) project of more than 3 stories reinforced concrete buildings having total floor area of more than 2,500sqm.
	Earth Moving	Bidder must have experience of earth moving with more than 500,000cum in the one project of railway depot, airport, road, housing development, industrial estate development and/or the like.

*Note – Refer Volume I, Part 1, Section 3, EQC Item 2.4.2;

** The Bidding Documents will prevail in case of any discrepancy between this Table and the Bidding Documents

Overview of Single-Stage One-Envelope Evaluation Criteria

1. **Lowest evaluated responsive bid wins**
2. **To pass (70%) the following technical evaluation criteria**
 - Overall Project Management
 - Implementation Proposals (Method Statements)
 - Project Programme Considerations
 - Project Administration Matters
3. **Multiple package discount**
 Bidders may propose multi-package discount for the two packages. The winning bid will be the lowest cost combination for the 2 packages in total.

	Discounted Price*	
Bidders	CP N-04	CP N-05
A	70	
B		90
C	80	
D	75*	75*
E		85
F	95*	85*
Etc..		

The lowest cost combination: D

Q & A Session

190530;
PBC;
ADB



Back up

190530;
PBC;
ADB

