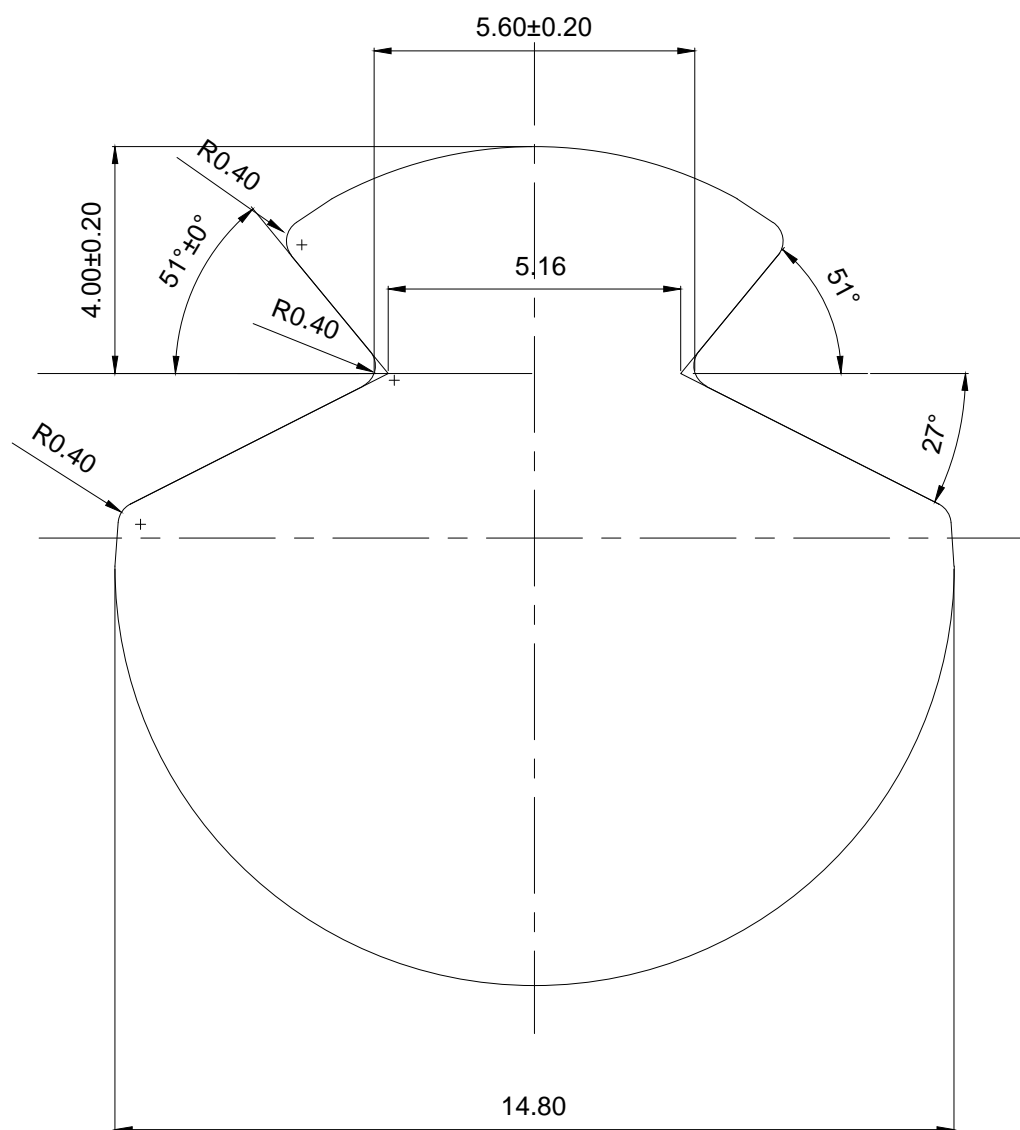


FIGURE 2






MNC-101 CONTACT WIRE 150mm², TYPE AC



Sl.no.	Designation	Qty.	Material	Ref.Stand.	Breaking load
1	Contact Wire 150mm ²	--	Copper-silver Alloy CuAg0,1	EN 50149	5240 daN

Sl.No.	Characteristics of Contact Wire	Units
1	Nominal Cross-section	150mm ² , Type AC
2	Cable Diameter	14.8mm
3	Electrical Resistance at 20° C (For Min. Cross sectional Area)	0,122 Ohm/km
4	Tensile strength	360 N/mm ²
5	Maximum Weight	1.374kg/m

- NOTE :
- All dimensions are in mm, unless otherwise stated.
 - For Details Refer Technical Specification for Contact Wire Doc. No.: L1CEP0-RSG-0-OCS-SPN-00030.
 - All dimension shall not be scaled from the drawing.

			GRANTORS  Department of Transportation and Light Rail Transit Authority		EPC CONTRACTOR A Consortium formed by :  PHILIPPINES		ORIGINATOR 1 (e.g CW JV)  ALSTOM		DRAWING STATUS: ISSUED FOR DESIGN & ACCEPTANCE CERTIFICATE		PROJECT: MANILA LRT1 CAVITE EXTENSION PHASE 1 (L1CEP1)	
			COMPANY  LIGHT RAIL MANILA CORPORATION		ORIGINATOR 2 (e.g DESIGNER)  ALSTOM		SCALE: NTS		TITLE: CONTACT WIRE 150mm ² , TYPE AC (COMPONENT & SUB COMPONENT DRAWINGS FOR OCS ON VIADUCT)		DRAWING NO. L1CEP2-RSG-2-OCS-DWG-00121	
							FORMAT: A3				SHEET NO. 03 OF 36	
							CADD REF: L1CEP2-RSG-2-OCS-DWG-00121				REV. B	
B	04.12.2019	ISSUED FOR DESIGN & ACCEPTANCE CERTIFICATE	CHETAN	D JAYA	K MOHAN							
A	27.09.2019	FIRTS ISSUE	CHETAN	D JAYA	K MOHAN							
REV	DATE	ISSUES / REVISIONS REGISTER	DRAWN	CHECKED	APPROVAL							