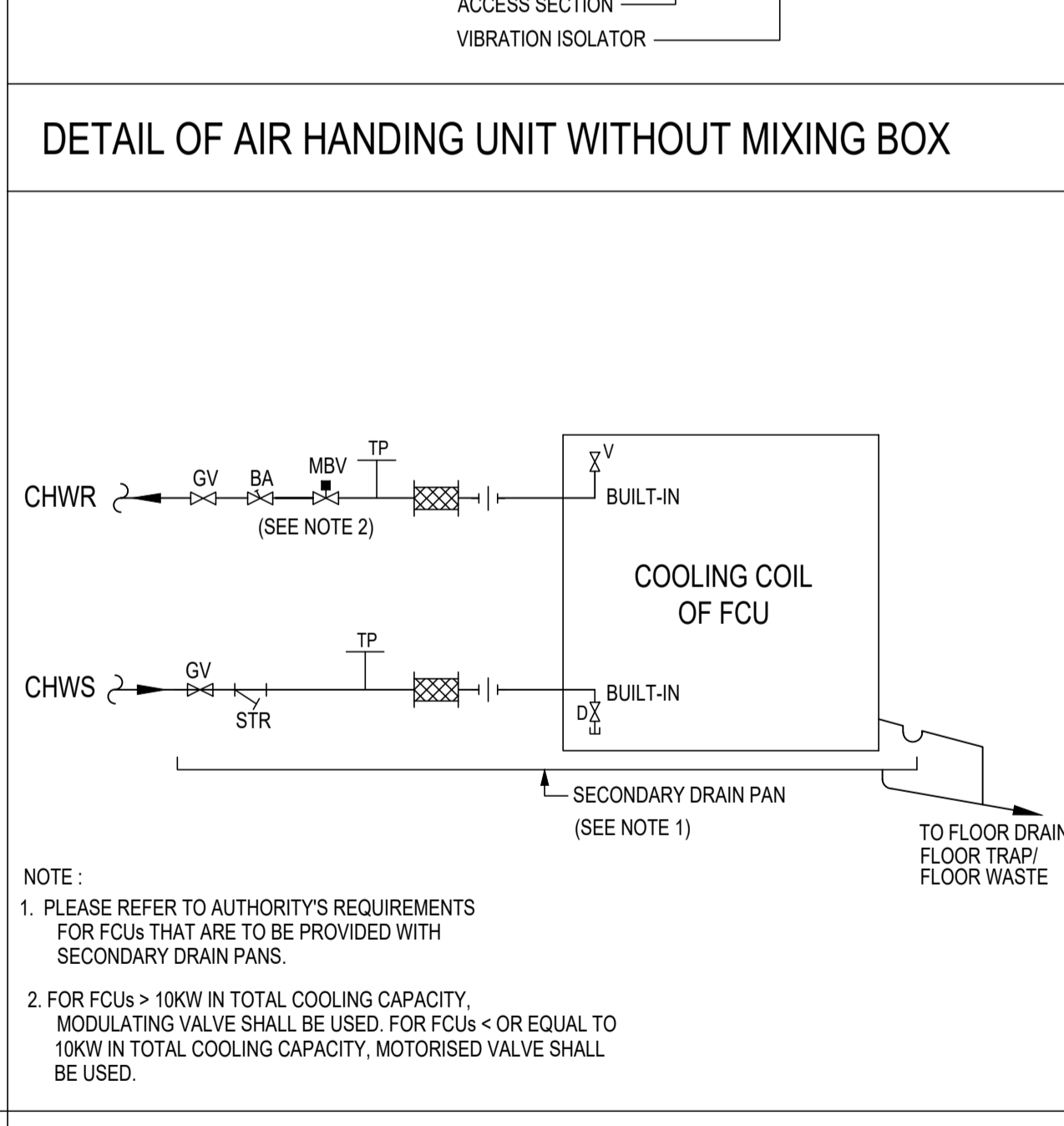
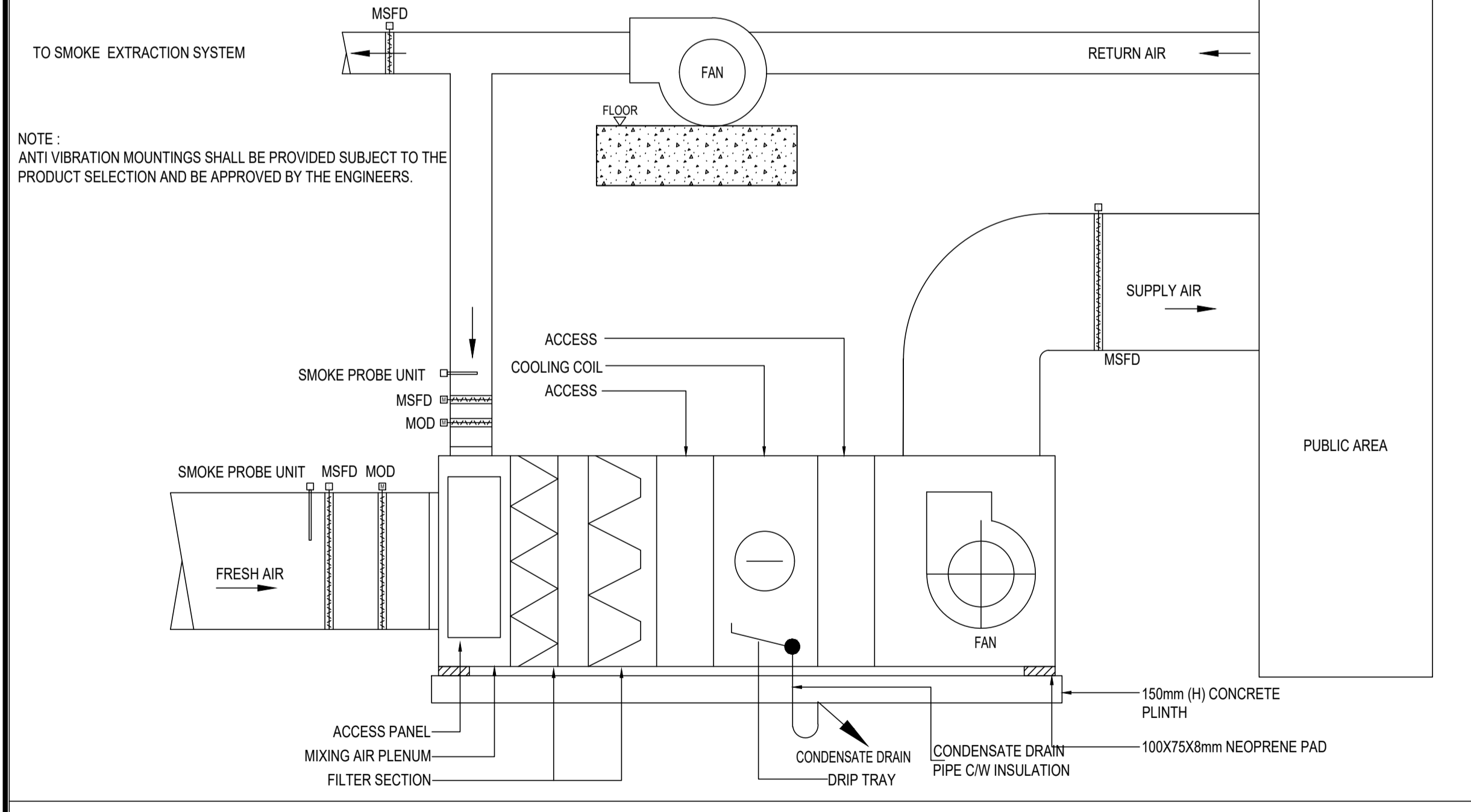
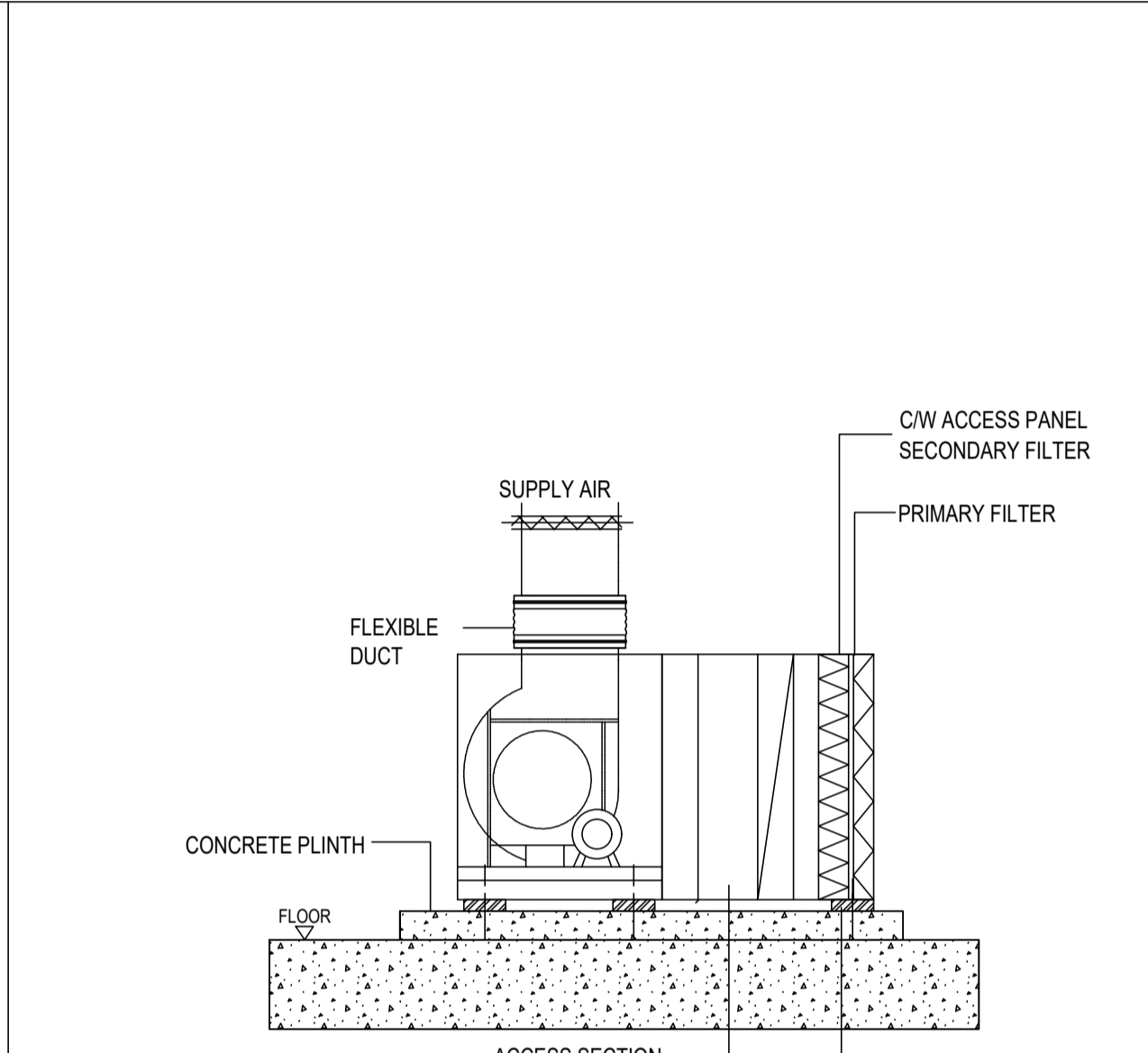
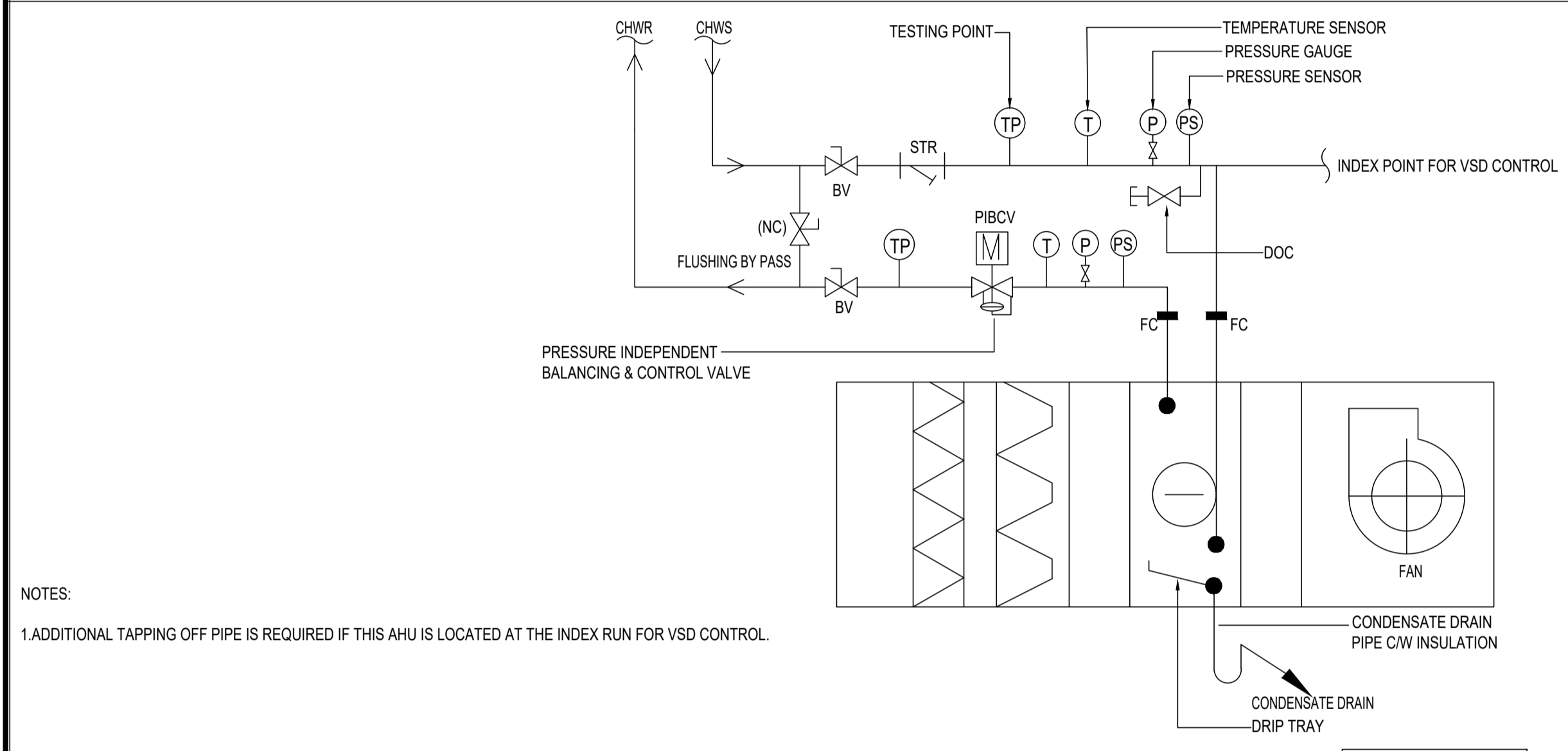
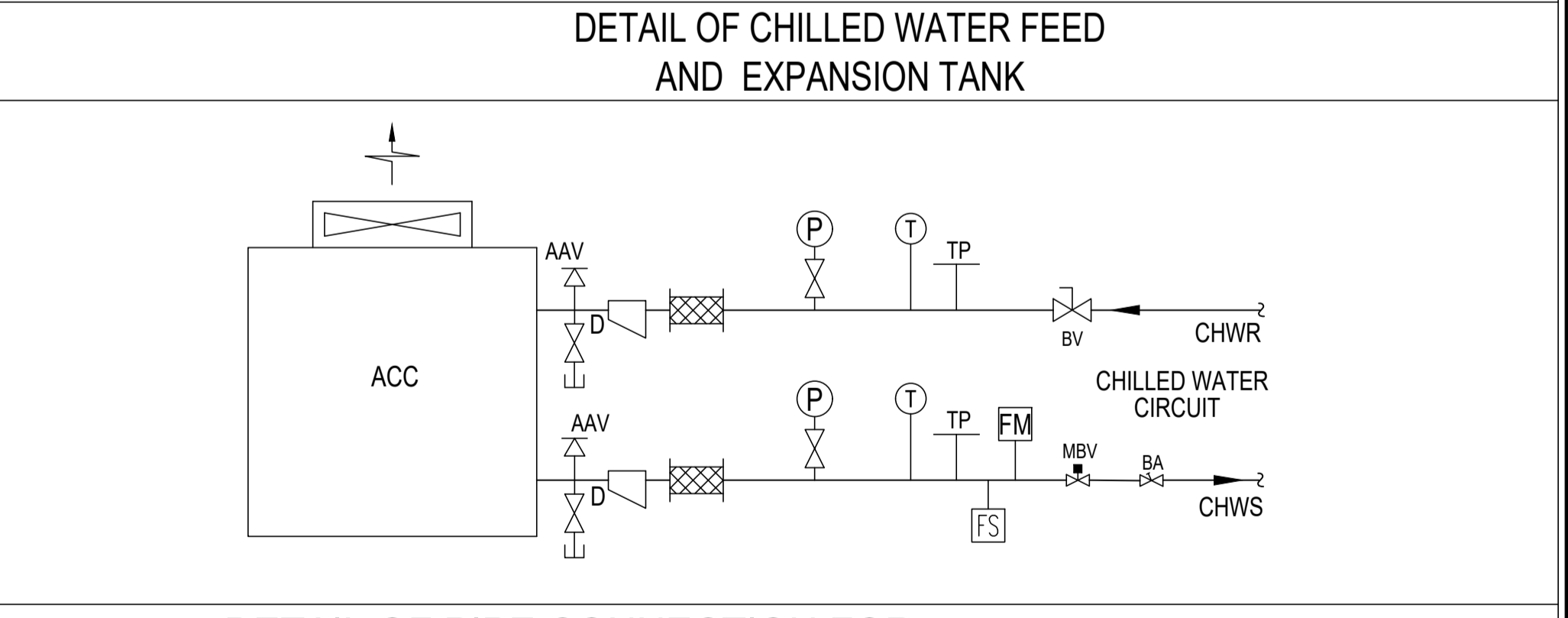


DETAIL OF FCU



MODEL	Capacity Liters	Conn. Size ©	H	h	φD	Approx. Weight kgs(empty)
CET - 24	24	1"	470	-	280	5
CET - 50	50	1"	490	115	410	11
CET - 100	100	1"	760	120	460	15
CET - 300	300	1.25"	1130	120	650	45
CET - 500	500	1.25"	1400	200	750	70
CET - 750	750	2"	1740	180	740	100
CET - 1000	1000	2"	1990	170	850	139
CET - 1500	1500	2"	1600	300	1110	390
CET - 2000	2000	2"	2110	300	1110	460
CET - 3000	3000	2"	2300	300	1310	760
CET - 4000	4000	2"	2300	300	1520	1095
CET - 5000	5000	2"	2800	300	1520	1300

Note: All dimensions are in mm.



VERSIONS	DATE	DESCRIPTION
1	30 Sep 2020	Issue for Bidding Documents

DEPARTMENT OF TRANSPORTATION (DOT)

JICA JAPAN INTERNATIONAL COOPERATION AGENCY (JICA)

CONSULTANT

JICA DESIGN TEAM

ORIENTAL CONSULTANTS GLOBAL CO.,LTD.	KATAHIRA & ENGINEERS INTERNATIONAL
TOKYO METRO CO., LTD.	PACIFIC CONSULTANTS CO.,LTD.
JAPAN INTERNATIONAL CONSULTANTS FOR TRANSPORTATION CO.,LTD.	TONICHI ENGINEERING CONSULTANTS, INC.
ALMEC CORPORATION	

TITLE	JDT	AECOM
DESIGNER	T.HOSOKAWA	AECOM IND
CHECK	T.SUNAMI	C.SAGUID
TEAM LEADER	H. KATO	R.SINGH
PR. MANAGER	S.NAKAMURA	T.TANG

METRO MANILA SUBWAY PROJECT PHASE1

Ventilation & Air Conditioning Typical Installation Detail Sheet-6

DATE	September 2020
SCALE	(A1) N.T.S., (A3) N.T.S
SHEET No.	
DRG No.	STN-MEP-VAC-CWD-1106
DRG S.	REV 0