

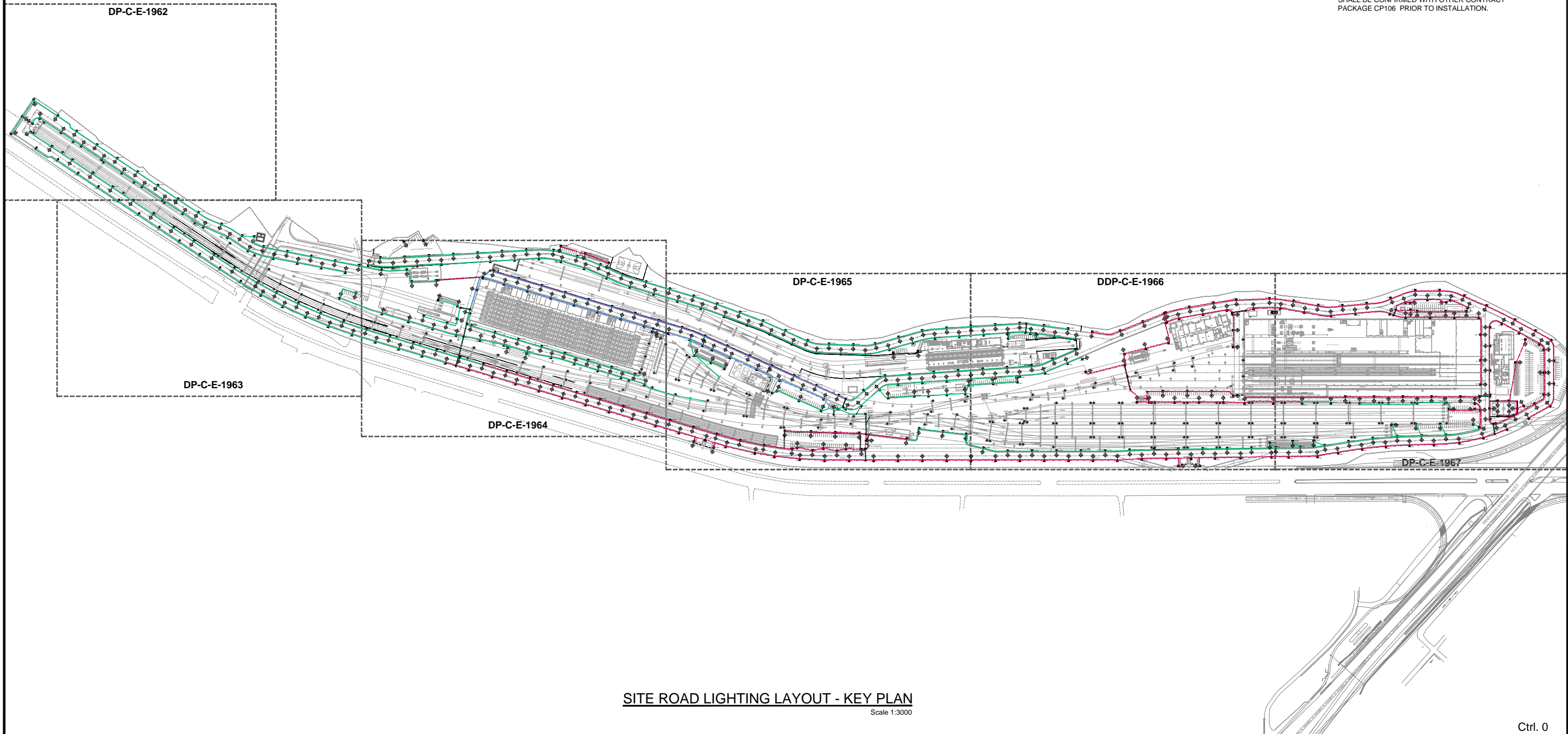


LEGEND:

- ROAD LIGHTING POLE FOUNDATION LOCATION (LUMINAIRE POLE & WIRING BY SYSTEM GROUP)
- UNDERGROUND CABLE DUCT 4" (110) x 1
- UNDERGROUND CABLE DUCT 4" (110) x 2
- UNDERGROUND CABLE DUCT 4" (110) x 3
- DUCKBANK WITH CONCRETE ENCASEMENT & REBARS - 4" (110) x 4, 6
- ROAD LIGHTING MANHOLE REFER TO LAYOUT FOR THE LOCATION

NOTES:

1. FOR DUCTBANK ARRANGEMENT REFER TO DRAWING DP-E-1968 FOR DETAILS.
2. ROAD LIGHTING FOUNDATION LOCATIONS & CABLE ROUTING LAYOUT ARE BASED ON DESIGN INFORMATION FROM SYSTEM GROUP. THE LOCATION SHALL BE CONFIRMED WITH OTHER CONTRACT PACKAGE CP106 PRIOR TO INSTALLATION.



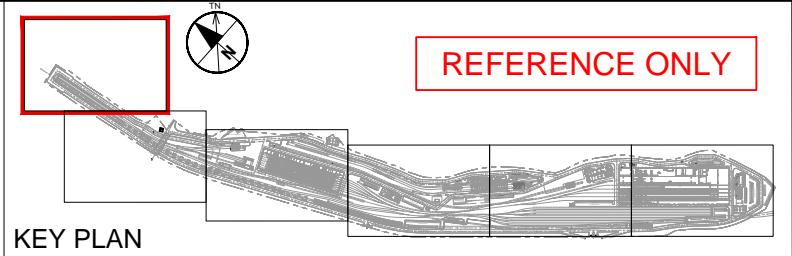
SITE ROAD LIGHTING LAYOUT - KEY PLAN
Scale 1:3000

Ctrl. 0

VERSIONS	DATE	DESCRIPTION	CONSULTANT			METRO MANILA SUBWAY PROJECT PHASE1 : CP101	DATE 31.Mar. 2019
			JICA DESIGN TEAM 			FOUNDATION & UNDERGROUND CABLE DUCTS FOR ROAD LIGHTING KEY PLAN	SCALE (A1) 1:2500, (A3) 1:5000
							TITLE
			DESIGNER			FOUNDATION & UNDERGROUND CABLE DUCTS FOR ROAD LIGHTING KEY PLAN	DRG No. DP-C-E-1961
			CHECK				REV 1
			TEAM LEADER				
			PR. MANAGER				
1	31/03/19	Revised / Additional Dwg.					
0	15/01/19	Detail Design Submission					



GENERAL BID BULLETIN NO.18
ANNEX "C"



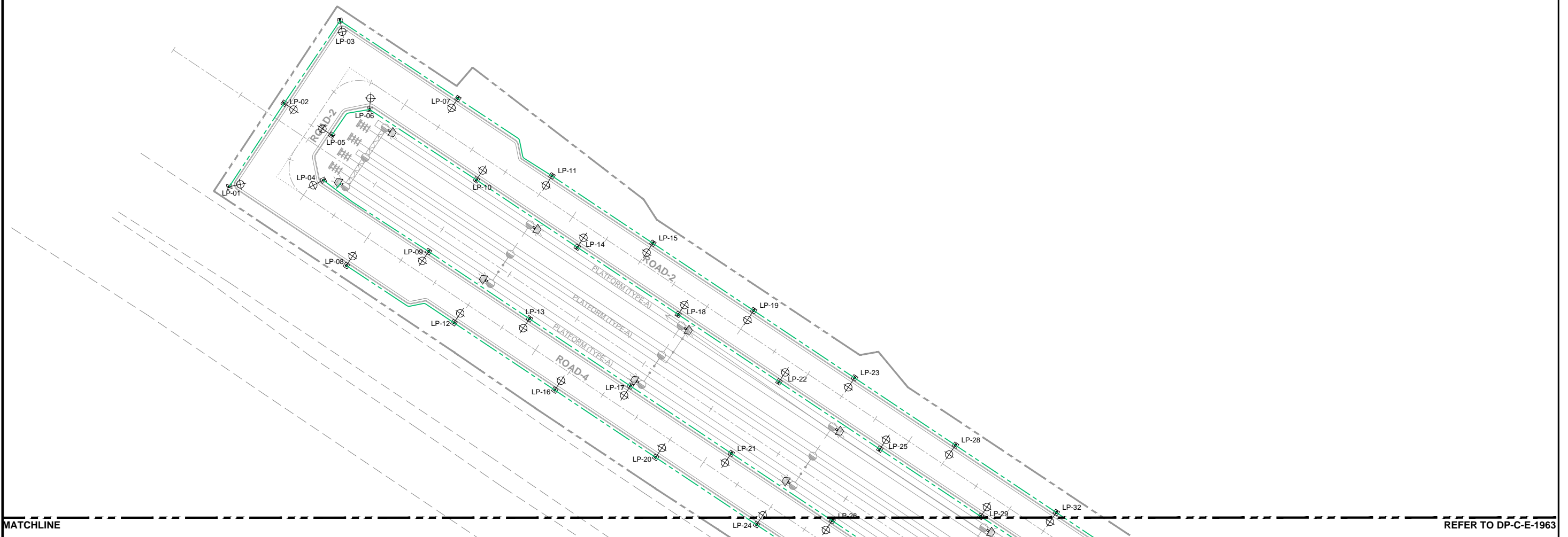
REFERENCE ONLY

LEGEND:

- ROAD LIGHTING POLE FOUNDATION LOCATION WITH HANDHOLE (LUMINAIRE POLE & WIRING BY SYSTEM)
- UNDERGROUND CABLE DUCT 4" (110) x 1
- UNDERGROUND CABLE DUCT 4" (110) x 2
- UNDERGROUND CABLE DUCT 4" (110) x 3
- DUCKBANK WITH CONCRETE ENCASUREMENT & REBARS - 4" (110) x 4, 6
- ROAD LIGHTING MANHOLE REFER TO LAYOUT FOR THE LOCATION

NOTES:

1. FOR DUCTBANK ARRANGEMENT REFER TO DRAWING DP-E-1968 FOR DETAILS.
2. ROAD LIGHTING FOUNDATION LOCATIONS & CABLE ROUTING LAYOUT ARE BASED ON DESIGN INFORMATION FROM SYSTEM GROUP. THE LOCATION SHALL BE CONFIRMED WITH OTHER CONTRACT PACKAGE CP106 PRIOR TO INSTALLATION.



MATCHLINE REFER TO DP-C-E-1963

SITE ROAD LIGHTING LAYOUT
Scale 1:500

Ctrl. 0

<table border="1" style="width: 100%; border-collapse: collapse;"> <thead> <tr> <th>VERSIONS</th> <th>DATE</th> <th>DESCRIPTION</th> </tr> </thead> <tbody> <tr> <td style="text-align: center;">1</td> <td>31/03/19</td> <td>Revised / Additional Dwg.</td> </tr> <tr> <td style="text-align: center;">0</td> <td>15/01/19</td> <td>Detail Design Submission</td> </tr> </tbody> </table>	VERSIONS	DATE	DESCRIPTION	1	31/03/19	Revised / Additional Dwg.	0	15/01/19	Detail Design Submission	 DEPARTMENT OF TRANSPORTATION (DOT)	 JAPAN INTERNATIONAL COOPERATION AGENCY (JICA)	CONSULTANT JICA DESIGN TEAM 	METRO MANILA SUBWAY PROJECT PHASE1 : CP101 FOUNDATION & UNDERGROUND CABLE DUCTS FOR ROAD LIGHTING (SHEET 1 OF 6)	<table border="1" style="width: 100%; border-collapse: collapse;"> <tr> <td>DATE</td> <td>31.Mar. 2019</td> </tr> <tr> <td>SCALE</td> <td>(A1) 500, (A3) 1:1000</td> </tr> <tr> <td>SHEET No.</td> <td></td> </tr> <tr> <td>DRG No.</td> <td>DP-C-E-1962</td> </tr> <tr> <td>REV</td> <td style="text-align: center;">1</td> </tr> </table>	DATE	31.Mar. 2019	SCALE	(A1) 500, (A3) 1:1000	SHEET No.		DRG No.	DP-C-E-1962	REV	1
VERSIONS	DATE	DESCRIPTION																						
1	31/03/19	Revised / Additional Dwg.																						
0	15/01/19	Detail Design Submission																						
DATE	31.Mar. 2019																							
SCALE	(A1) 500, (A3) 1:1000																							
SHEET No.																								
DRG No.	DP-C-E-1962																							
REV	1																							

MATCHLINE

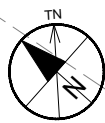
REFER TO DP-C-E-1962

REFERENCE ONLY

MATCHLINE

REFER TO DP-C-E-1964

Ctrl. 0



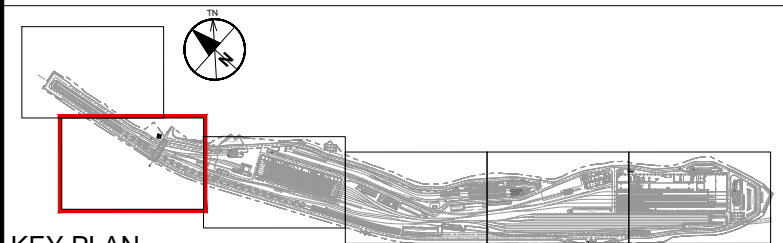
GENERAL BID BULLETIN NO.18 ANNEX "C"

LEGEND:

- ROAD LIGHTING POLE FOUNDATION LOCATION WITH HANDHOLE (LUMINAIRE POLE & WIRING BY SYSTEM)
- UNDERGROUND CABLE DUCT 4' (110) x 1
- UNDERGROUND CABLE DUCT 4' (110) x 2
- UNDERGROUND CABLE DUCT 4' (110) x 3
- DUCKBANK WITH CONCRETE ENCASEMENT & REBARS - 4' (110) x 4, 6
- ROAD LIGHTING MANHOLE REFER TO LAYOUT FOR THE LOCATION

NOTES:

1. FOR DUCTBANK ARRANGEMENT REFER TO DRAWING DP-E-1968 FOR DETAILS.
2. ROAD LIGHTING FOUNDATION LOCATIONS & CABLE ROUTING LAYOUT ARE BASED ON DESIGN INFORMATION FROM SYSTEM GROUP. THE LOCATION SHALL BE CONFIRMED WITH OTHER CONTRACT PACKAGE CP106 PRIOR TO INSTALLATION.



KEY PLAN

SITE ROAD LIGHTING LAYOUT

Scale 1:500

VERSIONS	DATE	DESCRIPTION
1	31/03/19	Revised / Additional Dwg.
0	15/01/19	Detail Design Submission

DEPARTMENT OF TRANSPORTATION (DOT)

JAPAN INTERNATIONAL COOPERATION AGENCY (JICA)

CONSULTANT		
TITLE	NAME	SIGNATURE
DESIGNER		
CHECK		
TEAM LEADER		
PR. MANAGER		

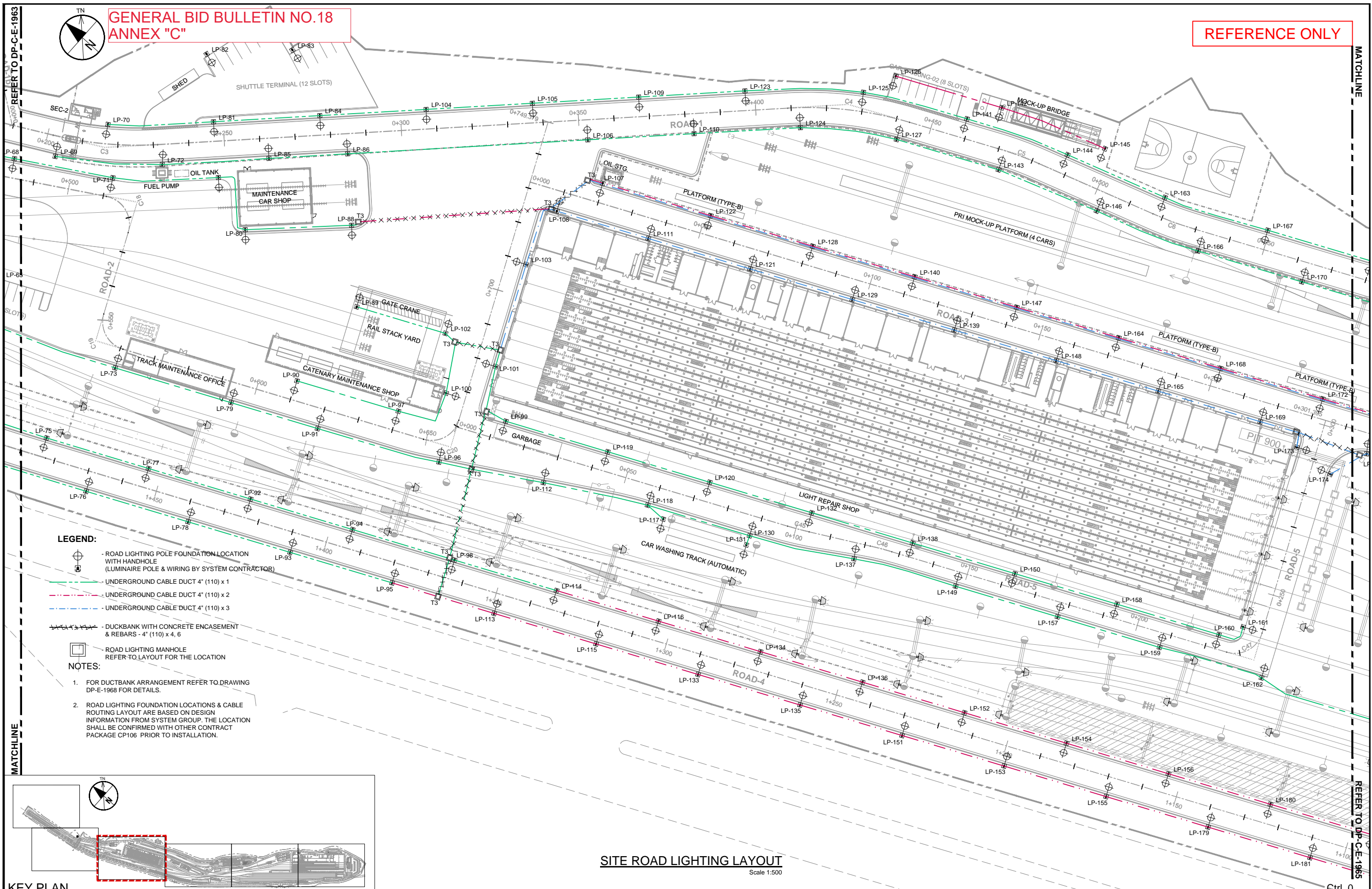
JICA DESIGN TEAM

- ORIENTAL CONSULTANTS GLOBAL CO.,LTD.
- TOKYO METRO CO., LTD.
- JAPAN INTERNATIONAL CONSULTANTS FOR TRANSPORTATION CO.,LTD.
- ALMEC CORPORATION
- KATAHIRA & ENGINEERS INTERNATIONAL
- PACIFIC CONSULTANTS CO.,LTD.
- TONICHI ENGINEERING CONSULTANTS, INC.

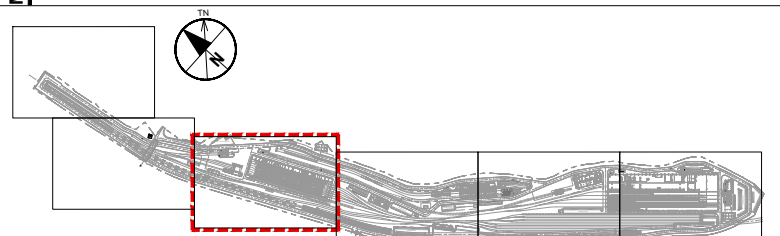
METRO MANILA SUBWAY PROJECT
PHASE1 : CP101

FOUNDATION & UNDERGROUND CABLE DUCTS FOR ROAD LIGHTING (SHEET 2 OF 6)

DATE	31.Mar. 2019
SCALE	(A1) 500, (A3) 1:1000
SHEET No.	
DRG No.	DP-C-E-1963
REV	1



- LEGEND:**
- ROAD LIGHTING POLE FOUNDATION LOCATION WITH HANDHOLE (LUMINAIRE POLE & WIRING BY SYSTEM CONTRACTOR)
 - UNDERGROUND CABLE DUCT 4" (110) x 1
 - UNDERGROUND CABLE DUCT 4" (110) x 2
 - UNDERGROUND CABLE DUCT 4" (110) x 3
 - DUCKBANK WITH CONCRETE ENCASEMENT & REBARS - 4" (110) x 4, 6
 - ROAD LIGHTING MANHOLE REFER TO LAYOUT FOR THE LOCATION
- NOTES:**
1. FOR DUCTBANK ARRANGEMENT REFER TO DRAWING DP-E-1968 FOR DETAILS.
 2. ROAD LIGHTING FOUNDATION LOCATIONS & CABLE ROUTING LAYOUT ARE BASED ON DESIGN INFORMATION FROM SYSTEM GROUP. THE LOCATION SHALL BE CONFIRMED WITH OTHER CONTRACT PACKAGE CP106 PRIOR TO INSTALLATION.



SITE ROAD LIGHTING LAYOUT
Scale 1:500

VERSIONS	DATE	DESCRIPTION
1	31/03/19	Revised / Additional Dwg.
0	15/01/19	Detail Design Submission

DEPARTMENT OF TRANSPORTATION (DOT)
 JAPAN INTERNATIONAL COOPERATION AGENCY (JICA)

CONSULTANT		TITLE	NAME	SIGNATURE
JICA DESIGN TEAM ORIENTAL CONSULTANTS GLOBAL CO. LTD. TOKYO METRO CO., LTD. JAPAN INTERNATIONAL CONSULTANTS FOR TRANSPORTATION CO., LTD. ALMEC CORPORATION		DESIGNER		
KATAHIRA & ENGINEERS INTERNATIONAL PACIFIC CONSULTANTS CO., LTD. TONICHI ENGINEERING CONSULTANTS, INC.		CHECK		
		TEAM LEADER		
		PR. MANAGER		

METRO MANILA SUBWAY PROJECT
 PHASE1 : CP101
FOUNDATION & UNDERGROUND CABLE DUCTS FOR ROAD LIGHTING (SHEET 3 OF 6)

DATE	31.Mar. 2019
SCALE	(A1) 500, (A3) 1:1000
SHEET No.	
DRG No.	DP-C-E-1964
REV	1

**GENERAL BID BULLETIN NO.18
ANNEX "C"**

REFERENCE ONLY

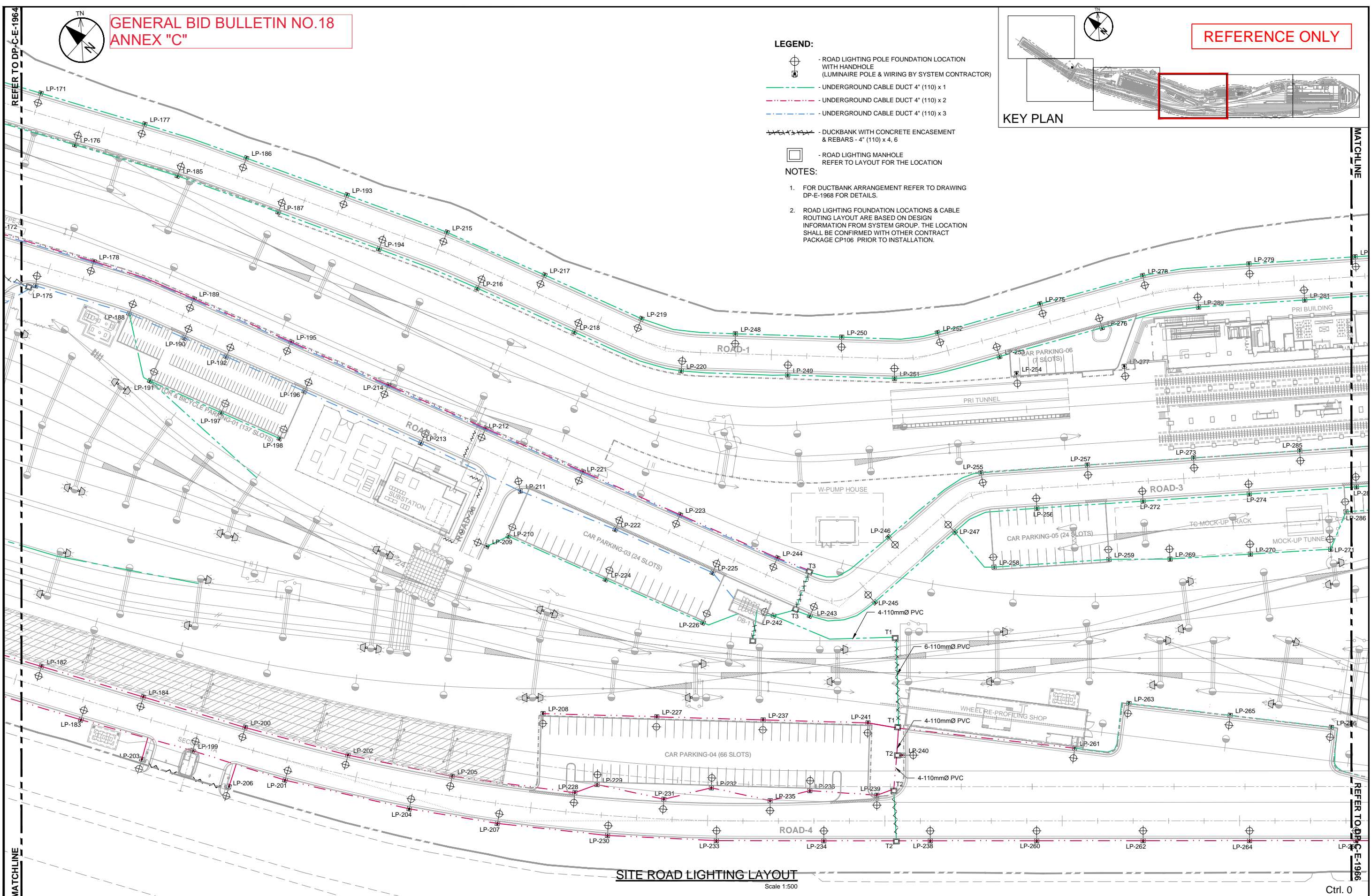
LEGEND:

- ROAD LIGHTING POLE FOUNDATION LOCATION WITH HANDHOLE (LUMINAIRE POLE & WIRING BY SYSTEM CONTRACTOR)
- UNDERGROUND CABLE DUCT 4" (110) x 1
- UNDERGROUND CABLE DUCT 4" (110) x 2
- UNDERGROUND CABLE DUCT 4" (110) x 3
- DUCKBANK WITH CONCRETE ENCASUREMENT & REBARS - 4" (110) x 4, 6
- ROAD LIGHTING MANHOLE REFER TO LAYOUT FOR THE LOCATION

NOTES:

1. FOR DUCTBANK ARRANGEMENT REFER TO DRAWING DP-E-1968 FOR DETAILS.
2. ROAD LIGHTING FOUNDATION LOCATIONS & CABLE ROUTING LAYOUT ARE BASED ON DESIGN INFORMATION FROM SYSTEM GROUP. THE LOCATION SHALL BE CONFIRMED WITH OTHER CONTRACT PACKAGE CP106 PRIOR TO INSTALLATION.

KEY PLAN



SITE ROAD LIGHTING LAYOUT
Scale 1:500

Ctrl. 0

VERSIONS	DATE	DESCRIPTION
1	31/03/19	Revised / Additional Dwg.
0	15/01/19	Detail Design Submission

DEPARTMENT OF TRANSPORTATION (DOT)

JICA JAPAN INTERNATIONAL COOPERATION AGENCY (JICA)

CONSULTANT		TITLE	NAME	SIGNATURE
	ORIENTAL CONSULTANTS GLOBAL CO. LTD.	DESIGNER		
	TOKYO METRO CO., LTD.	CHECK		
	JAPAN INTERNATIONAL CONSULTANTS FOR TRANSPORTATION CO. LTD.	TEAM LEADER		
	ALMEC CORPORATION	PR. MANAGER		
	KATAHIRA & ENGINEERS INTERNATIONAL			
	PACIFIC CONSULTANTS CO., LTD.			
	TONICHI ENGINEERING CONSULTANTS, INC.			

METRO MANILA SUBWAY PROJECT
PHASE1 : CP101

FOUNDATION & UNDERGROUND CABLE DUCTS FOR ROAD LIGHTING (SHEET 4 OF 6)

DATE	31.Mar. 2019
SCALE	(A1) 500, (A3) 1:1000
SHEET No.	
DRG No.	DP-C-E-1965
REV	1

REFERENCE ONLY

KEY PLAN

GENERAL BID BULLETIN NO.18
ANNEX "C"

REFER TO DP-C-E-1965

MATCHLINE

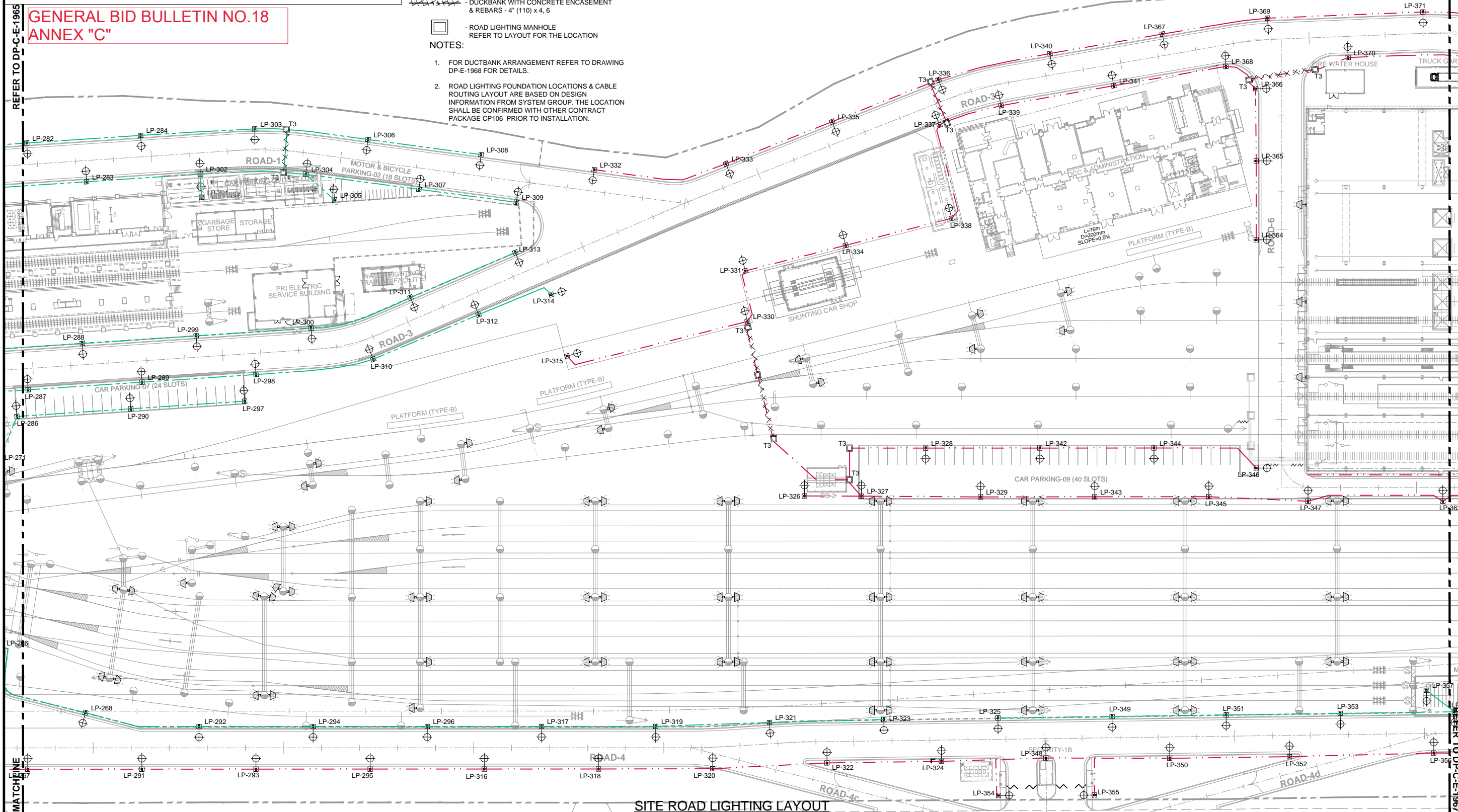
MATCHLINE

LEGEND:

- ROAD LIGHTING POLE FOUNDATION LOCATION WITH HANDHOLE (LUMINAIRE POLE & WIRING BY SYSTEM CONTRACTOR)
- UNDERGROUND CABLE DUCT 4" (110) x 1
- UNDERGROUND CABLE DUCT 4" (110) x 2
- UNDERGROUND CABLE DUCT 4" (110) x 3
- DUCKBANK WITH CONCRETE ENCASEMENT & REBARS - 4" (110) x 4, 6
- ROAD LIGHTING MANHOLE REFER TO LAYOUT FOR THE LOCATION

NOTES:

1. FOR DUCTBANK ARRANGEMENT REFER TO DRAWING DP-E-1968 FOR DETAILS.
2. ROAD LIGHTING FOUNDATION LOCATIONS & CABLE ROUTING LAYOUT ARE BASED ON DESIGN INFORMATION FROM SYSTEM GROUP. THE LOCATION SHALL BE CONFIRMED WITH OTHER CONTRACT PACKAGE CP106 PRIOR TO INSTALLATION.



SITE ROAD LIGHTING LAYOUT

Scale 1:500

Ctrl. 0

VERSIONS	DATE	DESCRIPTION
1	31/03/19	Revised / Additional Dwg.
0	15/01/19	Detail Design Submission

DEPARTMENT OF TRANSPORTATION (DOT)
 JAPAN INTERNATIONAL COOPERATION AGENCY (JICA)

CONSULTANT		
TITLE	NAME	SIGNATURE
DESIGNER		
CHECK		
TEAM LEADER		
PR. MANAGER		

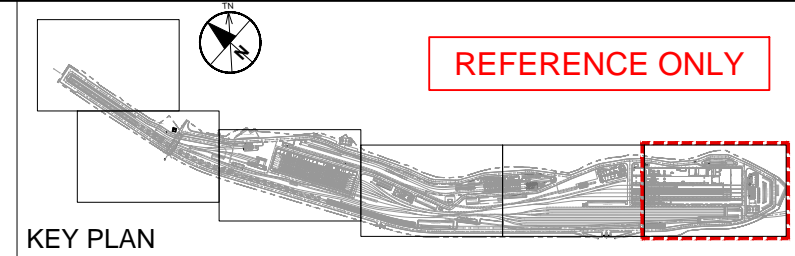
METRO MANILA SUBWAY PROJECT
 PHASE1 : CP101
FOUNDATION & UNDERGROUND CABLE DUCTS FOR ROAD LIGHTING (SHEET 5 OF 6)

DATE	31.Mar. 2019
SCALE	(A1) 500, (A3) 1:1000
SHEET No.	
DRG No.	DP-C-E-1966
REV	1

REFER TO DP-C-E-1966

**GENERAL BID BULLETIN NO.18
ANNEX "C"**

REFERENCE ONLY



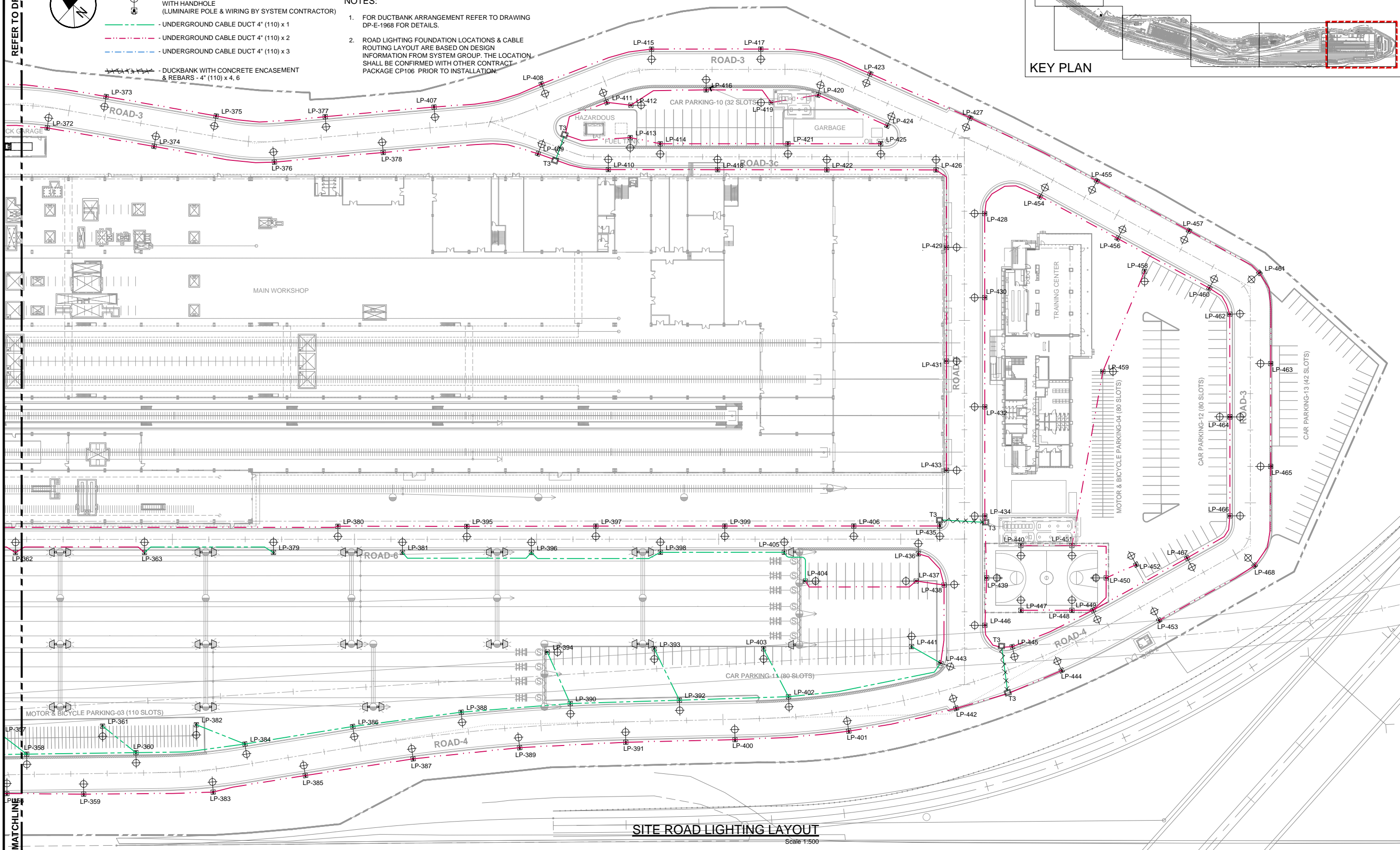
LEGEND:

- ROAD LIGHTING POLE FOUNDATION LOCATION WITH HANDHOLE (LUMINAIRE POLE & WIRING BY SYSTEM CONTRACTOR)
- UNDERGROUND CABLE DUCT 4" (110) x 1
- UNDERGROUND CABLE DUCT 4" (110) x 2
- UNDERGROUND CABLE DUCT 4" (110) x 3
- DUCKBANK WITH CONCRETE ENCASUREMENT & REBARS - 4" (110) x 4, 6

- ROAD LIGHTING MANHOLE REFER TO LAYOUT FOR THE LOCATION

NOTES:

1. FOR DUCTBANK ARRANGEMENT REFER TO DRAWING DP-E-1968 FOR DETAILS.
2. ROAD LIGHTING FOUNDATION LOCATIONS & CABLE ROUTING LAYOUT ARE BASED ON DESIGN INFORMATION FROM SYSTEM GROUP. THE LOCATION SHALL BE CONFIRMED WITH OTHER CONTRACT PACKAGE CP106 PRIOR TO INSTALLATION.



SITE ROAD LIGHTING LAYOUT
Scale 1:500

VERSIONS	DATE	DESCRIPTION
0	15/01/19	Detail Design Submission

DEPARTMENT OF TRANSPORTATION (DOT)

JICA JAPAN INTERNATIONAL COOPERATION AGENCY (JICA)

CONSULTANT

JICA DESIGN TEAM

- ORIENTAL CONSULTANTS GLOBAL CO., LTD.
- TOKYO METRO CO., LTD.
- JAPAN INTERNATIONAL CONSULTANTS FOR TRANSPORTATION CO., LTD.
- ALMEC CORPORATION
- KATAHIRA & ENGINEERS INTERNATIONAL
- PACIFIC CONSULTANTS CO., LTD.
- TONICHI ENGINEERING CONSULTANTS, INC.

TITLE	NAME	SIGNATURE
DESIGNER		
CHECK		
TEAM LEADER		
PR. MANAGER		

METRO MANILA SUBWAY PROJECT
PHASE1 : CP101

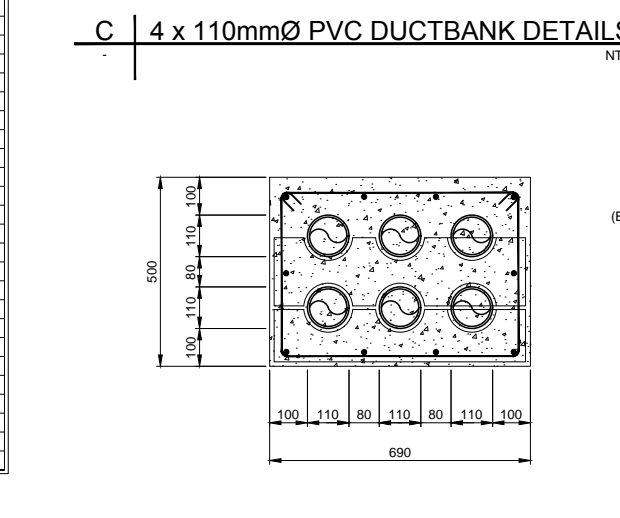
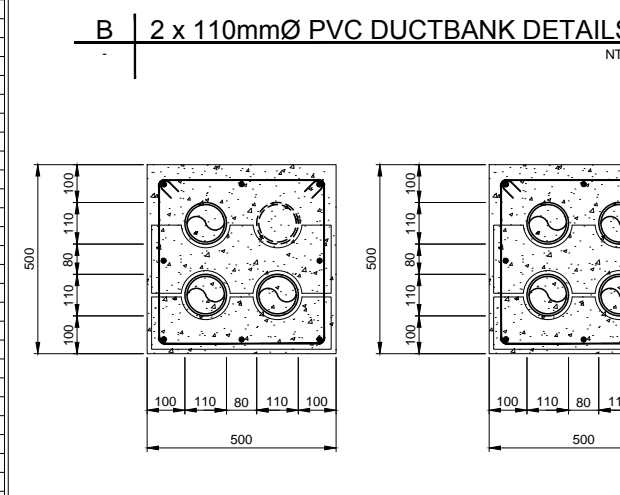
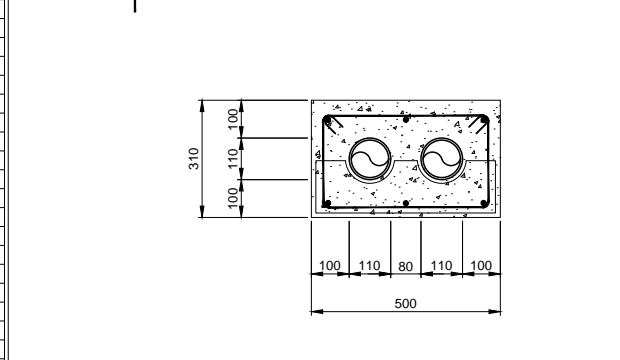
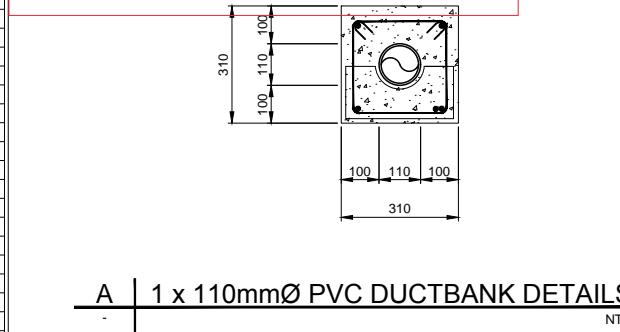
FOUNDATION & UNDERGROUND CABLE DUCTS FOR ROAD LIGHTING (SHEET 6 OF 6)

DATE	31.Mar. 2019
SCALE	(A1) 500, (A3) 1:1000
SHEET No.	
DRG No.	DP-C-E-1967
REV	1

Ctrl. 0

**GENERAL BID BULLETIN NO.18
ANNEX "C"**

Table with multiple columns of COORDINATES (POINTS, EASTING, NORTHING) for various points from LP-01 to LP-95. The table is organized into five main groups of points, each with a grid of 10x10 coordinates. Some points at the bottom are marked as DELETED.



D 6 x 160mmØ PVC DUCTBANK DETAILS NTS

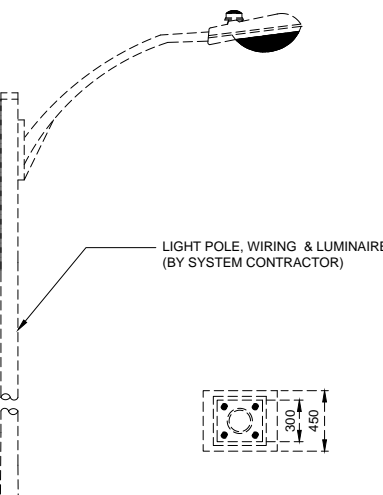
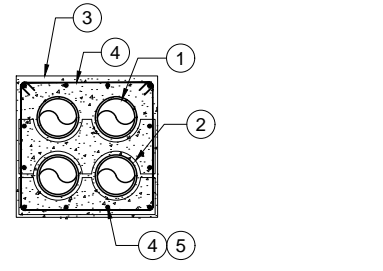
LEGEND:

- 1 POWER CONDUIT #110mmØ PVC
- 2 CONDUIT SPACER
- 3 CONCRETE ENCACEMENT
- 4 REBARS
- 5 8, 6, 4-Ø10
- 6 STIRRUPS Ø10 @ 250
- (Symbol) SPARE PVC CONDUIT

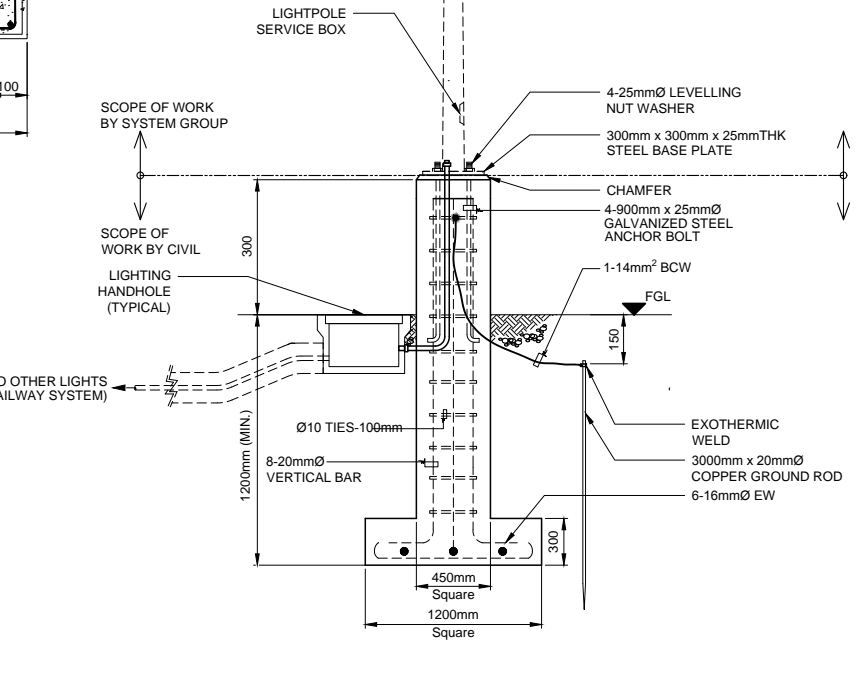
REFERENCE ONLY

NOTE

SET OUT POINTS FOR SITE ROAD LIGHTING FOUNDATION IS AT THE CENTER OF THE STRUCTURE.



STEEL BASE PLATE



1 STREET LIGHTING DETAILS NTS

Table with columns: VERSIONS, DATE, DESCRIPTION. It lists two versions: 1 (31/03/19, Revised / Additional Dwg.) and 0 (15/01/19, Detail Design Submission).

Table with columns: CONSULTANT, TITLE, NAME, SIGNATURE. It lists the JICA Design Team (Oriental Consultants Global Co., Ltd., Tokyo Metro Co., Ltd., Japan International Consultants for Transportation Co., Ltd., Almec Corporation) and KATAHIRA & ENGINEERS INTERNATIONAL (Pacific Consultants Co., Ltd., Tonichi Engineering Consultants, Inc.).

METRO MANILA SUBWAY PROJECT PHASE 1: CP101. SITE ROAD LIGHTING FOUNDATION COORDINATES & DETAILS. DATE: 31.Mar. 2019. SCALE: NTS. SHEET No. DRG No. DP-C-E-1968. REV 1.

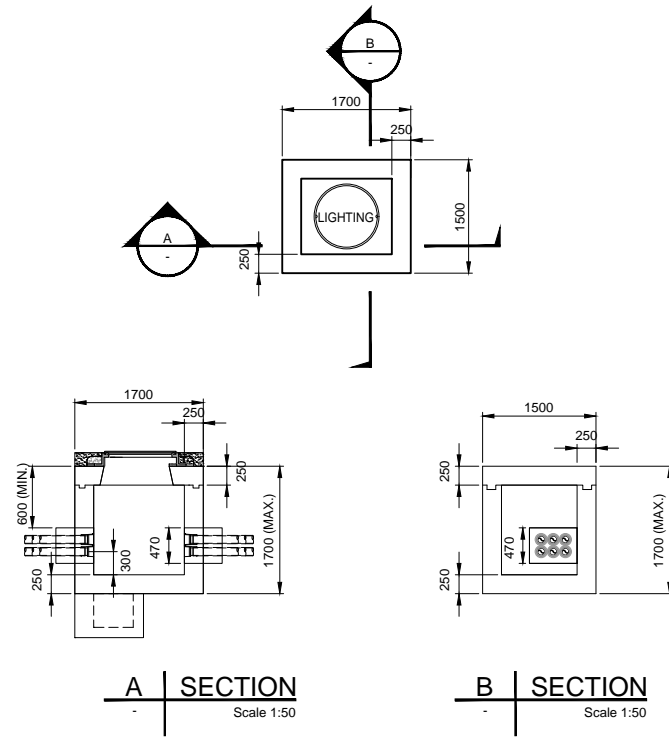
Ctr. 0

NOTE:

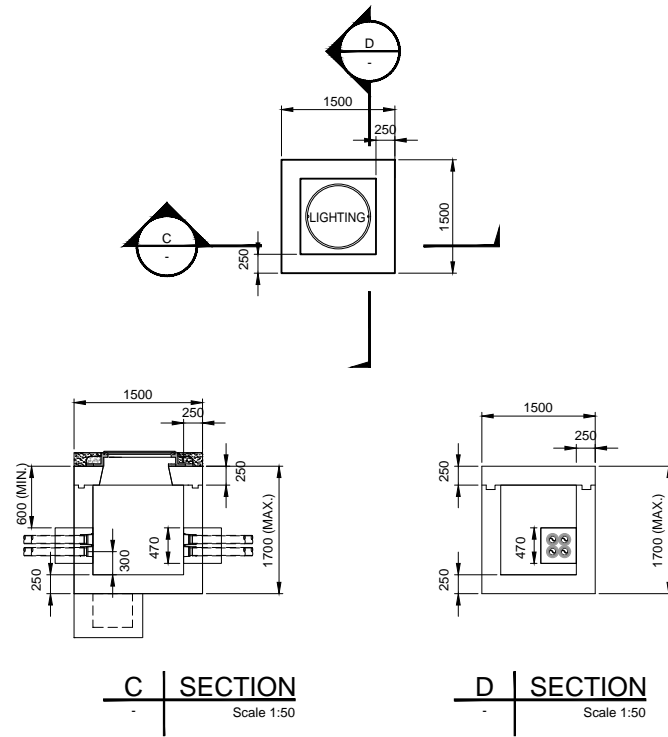
REFER TO DRAWING DP-C-E-1970 & DP-C-E-1971 FOR MANHOLE DETAILS.

**GENERAL BID BULLETIN NO.18
ANNEX "C"**

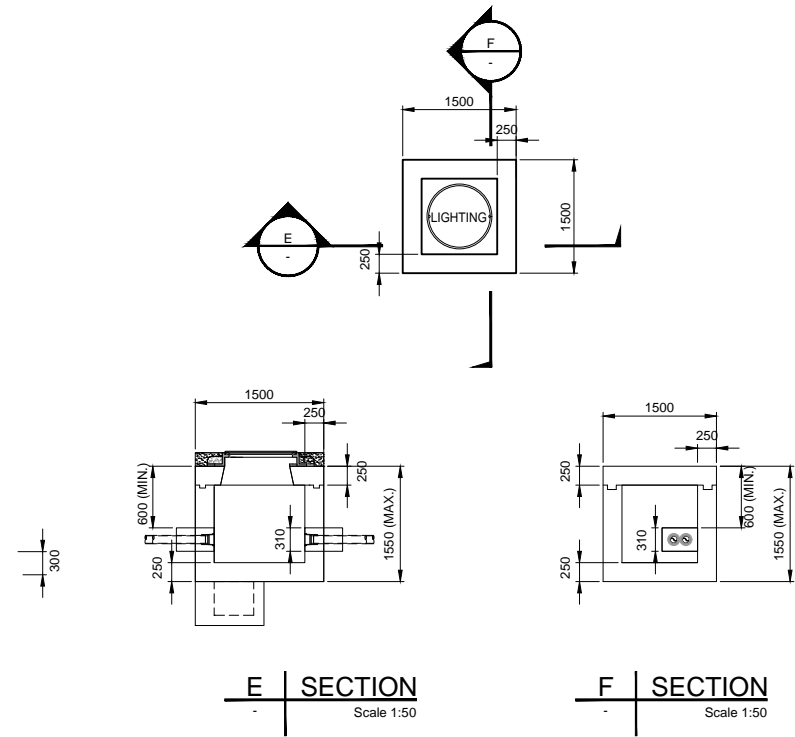
REFERENCE ONLY



SITE ROAD LIGHTING MANHOLE - T1
Scale 1:50



SITE ROAD LIGHTING MANHOLE - T2
Scale 1:50



SITE ROAD LIGHTING MANHOLE - T3
Scale 1:50

Ctrl. 0

VERSIONS	DATE	DESCRIPTION
1	31/03/19	Revised / Additional Dwg.
0	15/01/19	Detail Design Submission

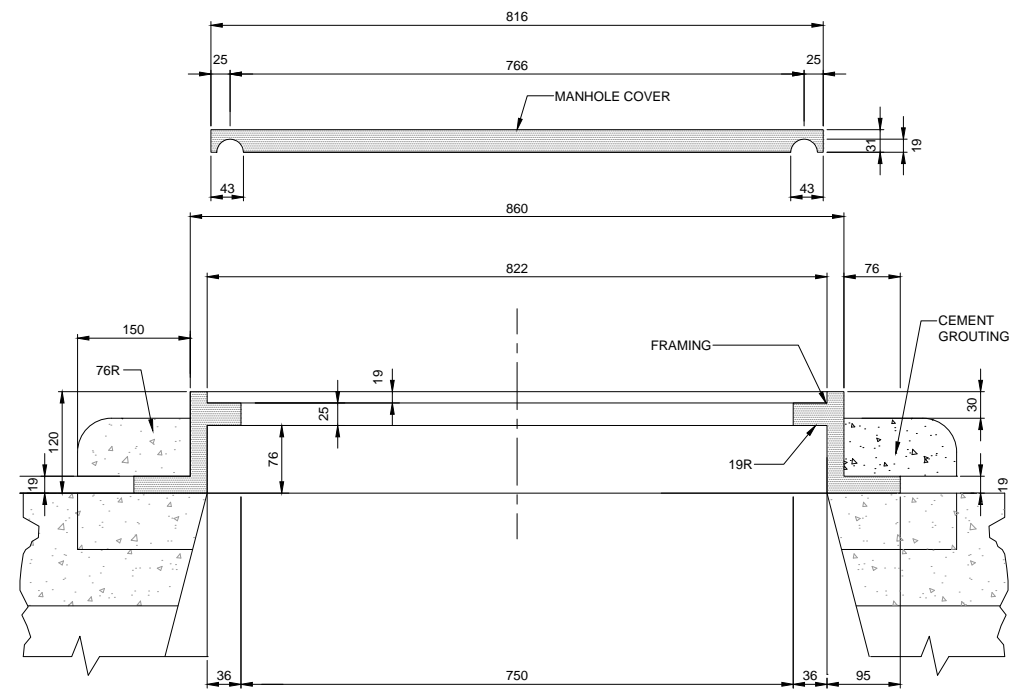
DEPARTMENT OF TRANSPORTATION (DOT)
JAPAN INTERNATIONAL COOPERATION AGENCY (JICA)

CONSULTANT		
TITLE	NAME	SIGNATURE
DESIGNER		
CHECK		
TEAM LEADER		
PR. MANAGER		

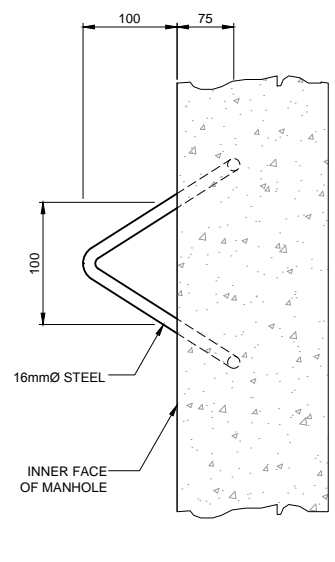
METRO MANILA SUBWAY PROJECT
 PHASE1 : CP101

SITE ROAD LIGHTING MANHOLE TYPE

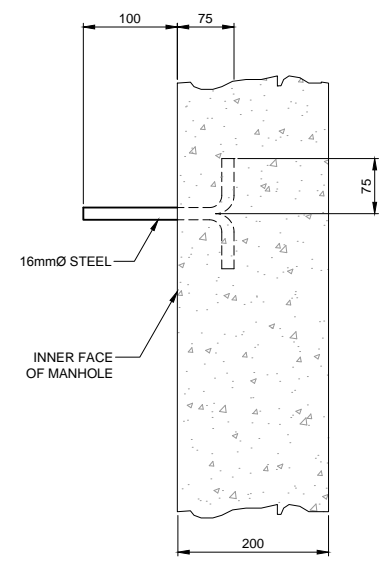
DATE	31.Mar. 2019
SCALE	(A1) 50, (A3) 1:100
SHEET No.	
DRG No.	DP-C-E-1969
REV	1



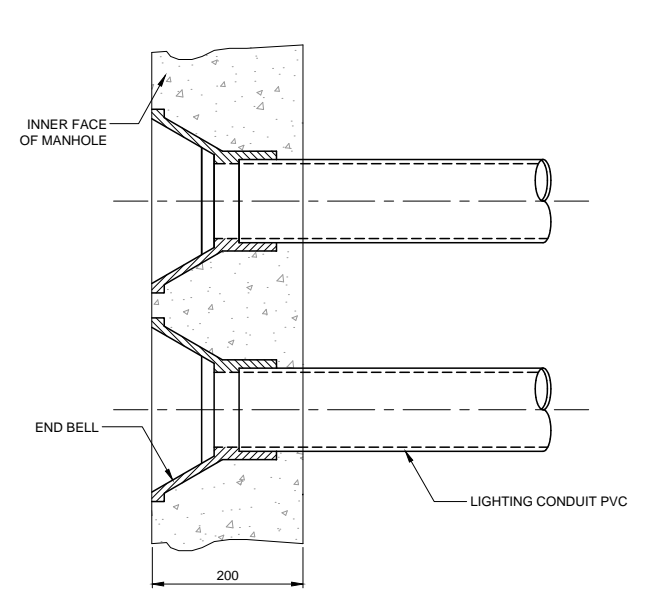
A SECTION
NTS



PLAN



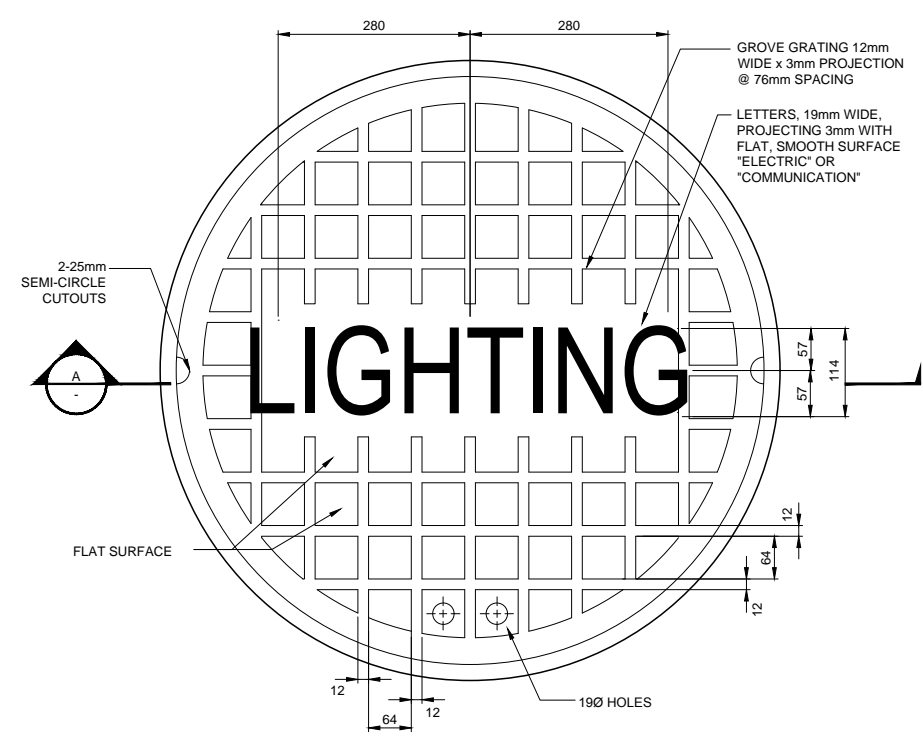
SECTION



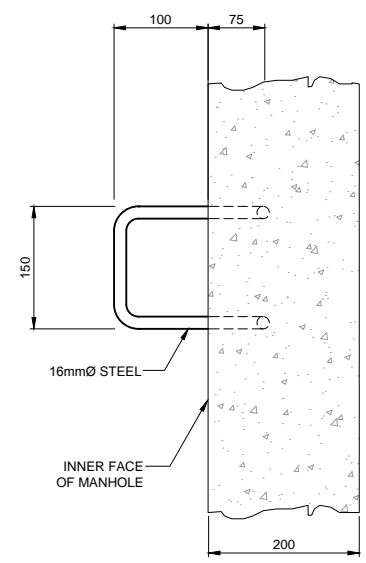
SECTION

2 MANHOLE PULLING-IRON
NTS

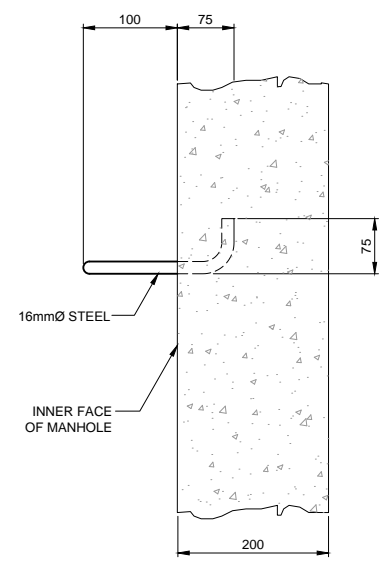
4 CONDUIT ENTRANCE AT MANHOLE
NTS



PLAN



PLAN



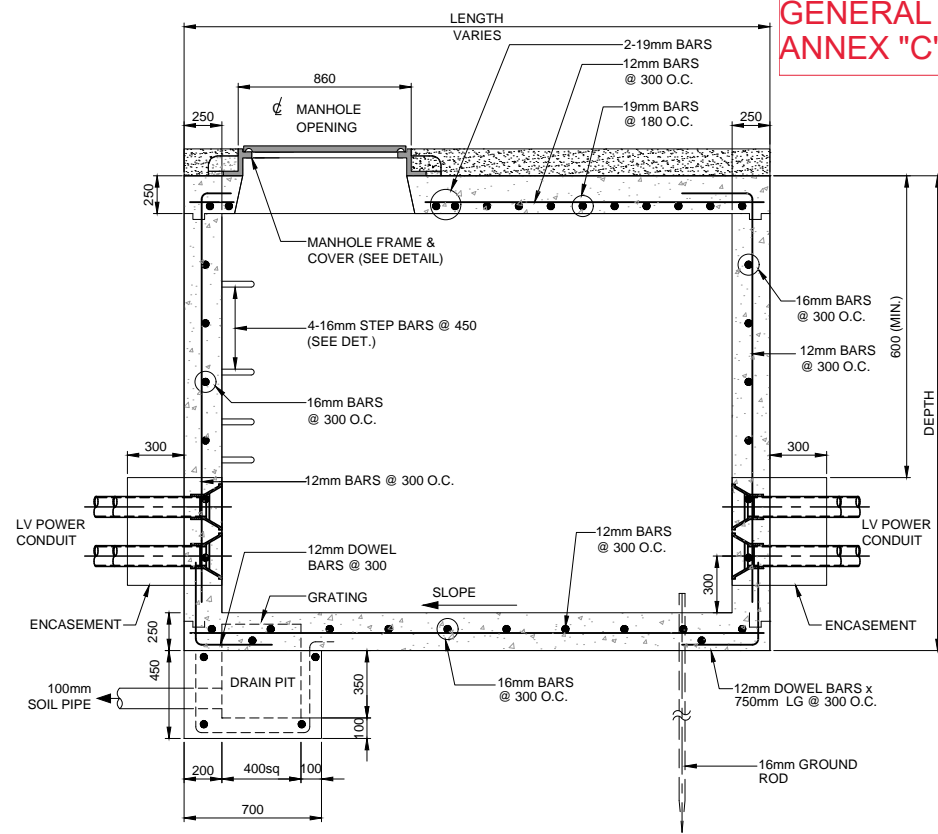
SECTION

3 MANHOLE STEP BAR
NTS

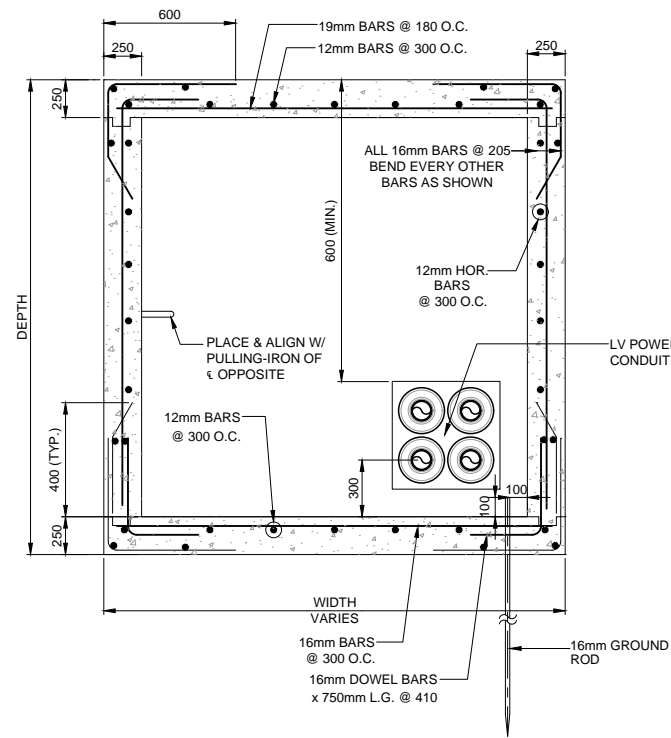
1 MANHOLE FRAME AND COVER (ROUND)
NTS

Ctrl. 0

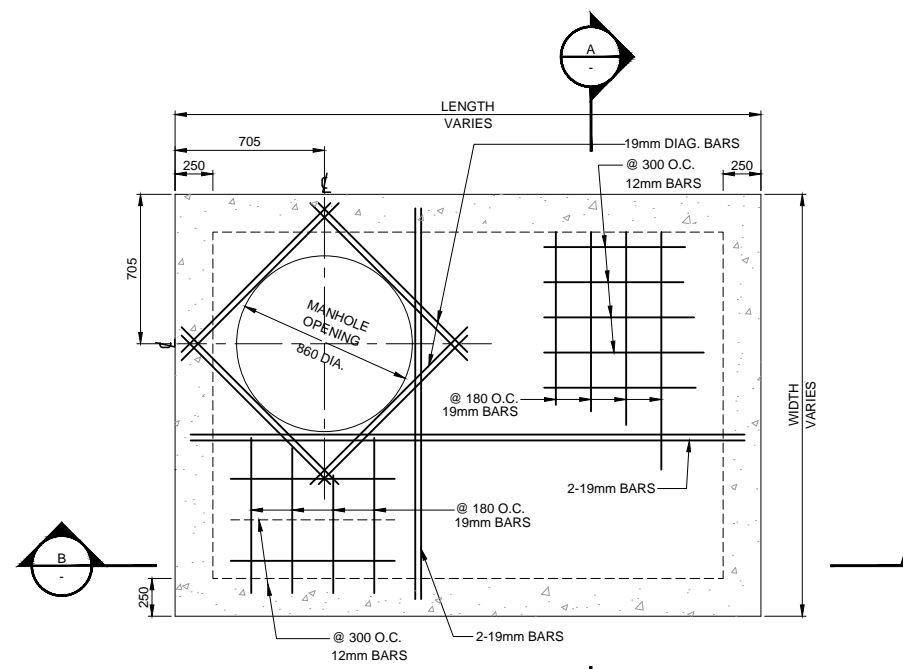
VERSIONS	DATE	DESCRIPTION	CONSULTANT			METRO MANILA SUBWAY PROJECT PHASE1 : CP101	DATE 31.Mar. 2019		
			JICA DESIGN TEAM ORIENTAL CONSULTANTS GLOBAL CO.,LTD. KATAHIRA & ENGINEERS INTERNATIONAL TOKYO METRO CO., LTD. PACIFIC CONSULTANTS CO.,LTD. JAPAN INTERNATIONAL CONSULTANTS FOR TRANSPORTATION CO.,LTD. TONICHI ENGINEERING CONSULTANTS, INC. ALMEC CORPORATION			TITLE	NAME	SIGNATURE	SCALE NTS
			DESIGNER			SITE ROAD LIGHTING MANHOLE DETAILS	SHEET No.		
			CHECK				DRG No. DP-C-E-1970		
			TEAM LEADER				REV 1		
			PR. MANAGER						
1	31/03/19	Revised / Additional Dwg.	DEPARTMENT OF TRANSPORTATION (DOT) JAPAN INTERNATIONAL COOPERATION AGENCY (JICA)						
0	15/01/19	Detail Design Submission							



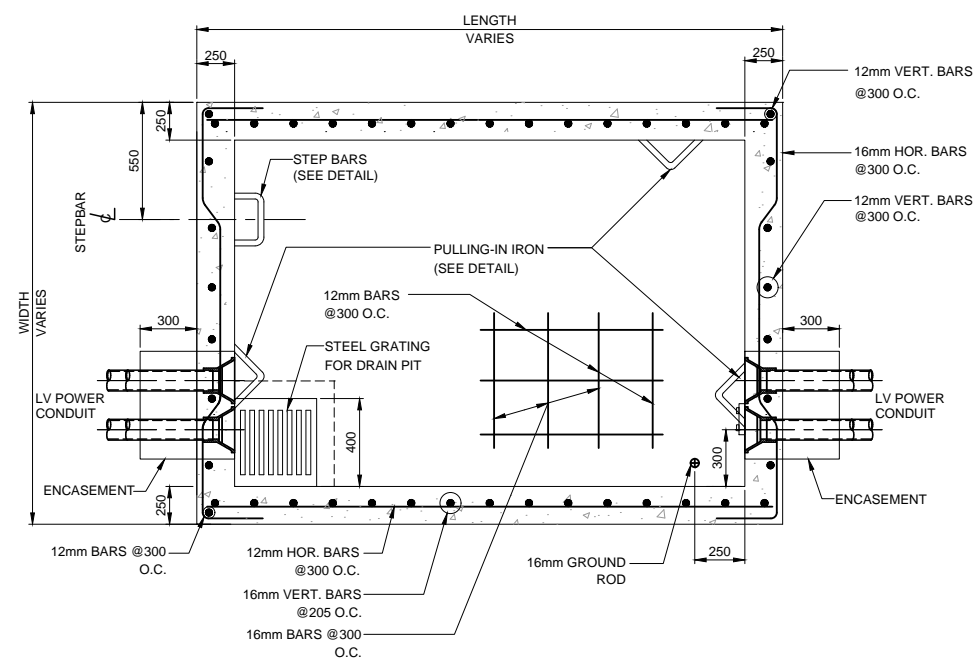
A SECTION
NTS



B SECTION
NTS



PLAN



SECTIONAL PLAN

1 LV ELECTRICAL MANHOLE (TYPICAL)
NTS

Ctrl. 0

VERSIONS	DATE	DESCRIPTION
1	31/03/19	Revised / Additional Dwg.
0	15/01/19	Detail Design Submission



DEPARTMENT OF TRANSPORTATION
(DOT)



JAPAN INTERNATIONAL
COOPERATION AGENCY (JICA)

CONSULTANT

JICA DESIGN TEAM	
ORIENTAL CONSULTANTS GLOBAL CO.,LTD.	KATAHIRA & ENGINEERS INTERNATIONAL
TOKYO METRO CO., LTD.	PACIFIC CONSULTANTS CO.,LTD.
JAPAN INTERNATIONAL CONSULTANTS FOR TRANSPORTATION CO.,LTD.	TONICHI ENGINEERING CONSULTANTS, INC.
ALMEC CORPORATION	

TITLE	NAME	SIGNATURE
DESIGNER		
CHECK		
TEAM LEADER		
PR. MANAGER		

METRO MANILA SUBWAY PROJECT
PHASE1 : CP101

SITE ROAD LIGHTING
MANHOLE DETAILS

DATE	31.Mar. 2019
SCALE	NTS
SHEET No.	
DRG No.	DP-C-E-1971
REV	1